

# E. coli DnaJ protein

**Cat. No. GTX57461-pro**
**Species** E. coli

**Package**  
100 µg

**Applications**
**Observed MW (kDa)** 41 kDa.

**Properties**
**Form** Liquid

**Buffer** 25mM Tris-HCl, 100mM NaCl, 10% Glycerol, 5mM DTT

**Preservative** No preservative

**Storage** Store as concentrated solution. Centrifuge briefly prior to opening vial. For short-term storage (1-2 weeks), store at 4°C. For long-term storage, aliquot and store at -20°C or below. Avoid multiple freeze-thaw cycles.

**Concentration** 1 mg/ml (Please refer to the vial label for the specific concentration.)

**Region/Sequence**

Full length protein, MAKQDYEIL GVSKTAEHE IRKAYKRLAM KYHPDRNQGD KEAEAKFKEI KEAYEVLTDTS QKRAAYDQYG HAAFEQGGMG GGGFGGGADF SDIFGDVFGD IFGGGRGRQR AARGADLRYN MELTLEEAVR GVTKEIRIPT LEECDVCHGS GAKPGTQPQT CPTCHGSGQV QMRQGGFAVQ QTCPHCQGRG TLIKDPCNKC HGHGRVERSK TLSVKIPAGV DTGDRIRLAG EGEAGEHGAP AGDLYVQVQV KQHPIFEREG NNLYCEVPIN FAMAALGGEI EVPTLDGRVK LKVPGETQTG KLFRMRGKGV KSVRGGAQGD LLCRWVETP VGLNERQKQL LQELQESFGG PTGEHNSPRS KSFFDGVKKF FDDLTR

**Expression System** E. coli

**Purity** > 95% by SDS-PAGE.

**Conjugation** Unconjugated

**Note**

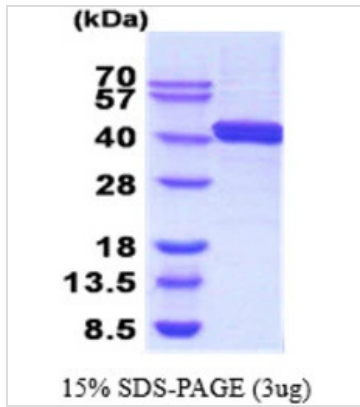
For laboratory research use only. Not for any clinical, therapeutic, or diagnostic use in humans or animals. Not for animal or human consumption.

Purchasers shall not, and agree not to enable third parties to, analyze, copy, reverse engineer or otherwise attempt to determine the structure or sequence of the product.



For full product information, images and publications, please visit our [website](#).

## DATA IMAGES

**GTX57461-pro Image**

3 $\mu$ g DnaJ protein (GTX57461-pro) by SDS-PAGE under reducing condition and visualized by coomassie blue stain.



For full product information, images and publications, please visit our [website](#).