

E. coli pykF protein, His tag

Cat. No. GTX57469-pro

Species E. coli

Package
100 µg

Applications

Observed MW (kDa) 51 kDa.

Properties

Form Liquid

Buffer 20mM Tris-HCl, 10% Glycerol

Preservative No preservative

Storage Store as concentrated solution. Centrifuge briefly prior to opening vial. For short-term storage (1-2 weeks), store at 4°C. For long-term storage, aliquot and store at -20°C or below. Avoid multiple freeze-thaw cycles.

Concentration 1 mg/ml (Please refer to the vial label for the specific concentration.)

Region/Sequence

Full length protein, N-terminal His-Tag; MGSSHHHHHH SSSLVPRGSH MGSHMKKTKI VCTIGPKTES EEMLAKMLDA
 GMNVMLNFS HGDYAEHGQR IQNLRNVMSK TGKTAAILLD TKGPEIRTMK LEGGNDVSLK AGQTFTFTD KSVIGNSEMV
 AVTYEGFTTD LSVGNTVLVD DGLIGMEVTA IEGNKVICKV LNNGDLDGENK GVNLPGVSA LPALAEKDKQ DLIFGCEQGV
 DFVAASFIRK RSDVIEIREH LKAHGGENIH IISKIENQEG LNNFDEILEA SDGIMVARGD LGVEIPVEEV IFAQKMMIEK CIRARKVIT
 ATQMLDSMIK NPRPTRAEAG DVANAILDGT DAVMLSGESA KGKYPLEAVS IMATICERTD RVMNSRLEFN NDNRLRITE
 AVCRGAVETA EKLDAPLIW ATQGGKSARA VRKYFPDATI LALTNEKTA HQLVLSKGVV PQLVKEITST DDFYRLGKEL
 ALQSGLAHKG DVVVMVSGAL VPSGTTNTAS VHVL

Expression System E. coli

Purity > 95% by SDS-PAGE.

Conjugation Unconjugated

Note

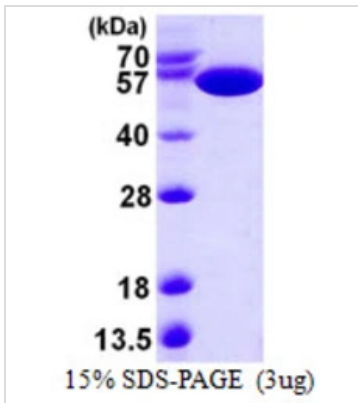
For laboratory research use only. Not for any clinical, therapeutic, or diagnostic use in humans or animals. Not for animal or human consumption.

Purchasers shall not, and agree not to enable third parties to, analyze, copy, reverse engineer or otherwise attempt to determine the structure or sequence of the product.



For full product information, images and publications, please visit our [website](#).

DATA IMAGES

**GTX57469-pro Image**

3 μ g pykF protein (GTX57469-pro) by SDS-PAGE under reducing condition and visualized by coomassie blue stain.



For full product information, images and publications, please visit our [website](#).