

E. coli IdhA protein, His tag

Cat. No. GTX57472-pro**Species** E. coli**Package**

100 µg

Applications

Observed MW (kDa) 37 kDa.

Properties

Form Liquid**Buffer** 20mM Tris-HCl, 100mM NaCl, 10% Glycerol**Preservative** No preservative**Storage** Store as concentrated solution. Centrifuge briefly prior to opening vial. For short-term storage (1-2 weeks), store at 4°C. For long-term storage, aliquot and store at -20°C or below. Avoid multiple freeze-thaw cycles.**Concentration** 1 mg/ml (Please refer to the vial label for the specific concentration.)**Region/Sequence**

Full length protein, N-terminal His-Tag; MGSSHHHHHH SSGLVPRGSH MGSHMKLAVY STKQYDKKYL QQVNESFGFE
 LEFFDFLLTE KTAKTANGCE AVCIFVNDG SRPVLEELK HGVKYIALRC AGFNNVDLDA AKELGLKVR VPAYDPEAVA
 EHAIGMMMTL NRRIHAYQR TRDANFSLEG LTGFTMYGKT AGVIGTGKIG VAMLRILKGF GMRLAFDPY PSAAAELGV
 EYVDLPTLFS ESDVISLHCP LTPENYHLLN EAAFEQMKNG VMIVNTRGA LIDSQAIEA LKNQKIGSLG MDVYENERDL
 FFEDKSNDA QDDVFRRLSA CHNVLTGHQ AFLTAEALTS ISQTTLQNL NLEKGETCPN ELV

Expression System E. coli**Purity** > 95% by SDS-PAGE.**Conjugation** Unconjugated**Note**

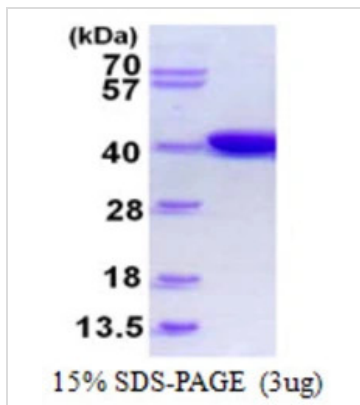
For laboratory research use only. Not for any clinical, therapeutic, or diagnostic use in humans or animals. Not for animal or human consumption.

Purchasers shall not, and agree not to enable third parties to, analyze, copy, reverse engineer or otherwise attempt to determine the structure or sequence of the product.



For full product information, images and publications, please visit our [website](#).

DATA IMAGES

**GTX57472-pro Image**

3 μ g IdhA protein (GTX57472-pro) by SDS-PAGE under reducing condition and visualized by coomassie blue stain.



For full product information, images and publications, please visit our [website](#).