

## E. coli hchA protein, His tag

Cat. No. GTX57473-pro

Species E. coli

Package  
100 µg

## Applications

Observed MW (kDa) 31 kDa.

## Properties

Form Liquid

Buffer 20mM Tris-HCl, 100mM NaCl, 20% Glycerol, 1mM DTT

Preservative No preservative

Storage Store as concentrated solution. Centrifuge briefly prior to opening vial. For short-term storage (1-2 weeks), store at 4°C. For long-term storage, aliquot and store at -20°C or below. Avoid multiple freeze-thaw cycles.

Concentration 1 mg/ml (Please refer to the vial label for the specific concentration.)

## Region/Sequence

Full length protein, N-terminal His-Tag; MGSSHHHHHH SSSLVPRGSH MTVQTSKNPQ VDAIEDNAFF PSEYLSQYT  
 SPVSDLGVD YPKPYRGKHK ILVIAADERY LPTDNGKLF S TGNHPITLL PLYHLHAAGF EFEVATISGL MTKFEYWAMP  
 HKDEKVMPPF EQHKSLFRNP KKLADWASL NADSEYAAIF VPGGHGALIG LPESQDVAAA LQWAIKNDRF VISLCHGPAA  
 FLALRHGDNP LNGYSICAFP DAADKQTPEI GYMPGHLTWY FGEELKKMGM NIINDDITGR VHKDRKLLTG DSPFAANALG  
 KLA AQEMLAA YAG

Expression System E. coli

Purity &gt; 95% by SDS-PAGE.

Conjugation Unconjugated

## Note

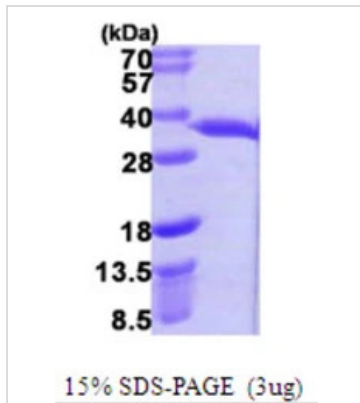
For laboratory research use only. Not for any clinical, therapeutic, or diagnostic use in humans or animals. Not for animal or human consumption.

Purchasers shall not, and agree not to enable third parties to, analyze, copy, reverse engineer or otherwise attempt to determine the structure or sequence of the product.



For full product information, images and publications, please visit our [website](#).

## DATA IMAGES

**GTX57473-pro Image**

3 $\mu$ g hchA protein (GTX57473-pro) by SDS-PAGE under reducing condition and visualized by coomassie blue stain.



For full product information, images and publications, please visit our [website](#).