

E. coli GrpE protein

Cat. No. GTX57481-pro
Species E. coli

Package
100 µg

Applications
Observed MW (kDa) 22 kDa.

Properties
Form Liquid

Buffer 20mM Tris, 100mM NaCl

Preservative No preservative

Storage Store as concentrated solution. Centrifuge briefly prior to opening vial. For short-term storage (1-2 weeks), store at 4°C. For long-term storage, aliquot and store at -20°C or below. Avoid multiple freeze-thaw cycles.

Concentration 1 mg/ml (Please refer to the vial label for the specific concentration.)

Region/Sequence Full length protein, MSSKEQKTPE GQAPEEIIIMD QHEEIEAVEP EASAEQVDPR DEKIANLEAQ LAEAQTRERD GILRVKAEME NLRRTRELDI EKAHKFALEK FINELLPVID SLDRALEVAD KANPDMSAMV EGIELTLKSM LDVVRKFGVE VIAETNVPLD PNVHQAIAMV ESDDVAPGNV LGIMQKGYTL NGR TIRAAMV TVAKAKA

Expression System E. coli

Purity > 90% by SDS-PAGE.

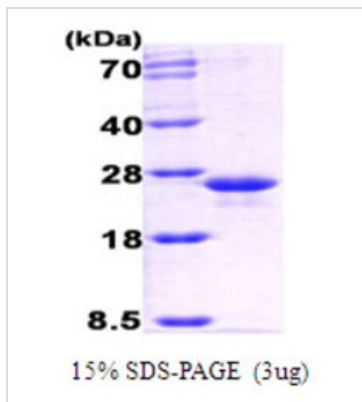
Conjugation Unconjugated

Note For laboratory research use only. Not for any clinical, therapeutic, or diagnostic use in humans or animals. Not for animal or human consumption.

Purchasers shall not, and agree not to enable third parties to, analyze, copy, reverse engineer or otherwise attempt to determine the structure or sequence of the product.


For full product information, images and publications, please visit our [website](#).

DATA IMAGES

**GTX57481-pro Image**

3 μ g GrpE protein (GTX57481-pro) by SDS-PAGE under reducing condition and visualized by coomassie blue stain.



For full product information, images and publications, please visit our [website](#).