

## E. coli map protein, His tag

**Cat. No. GTX57488-pro****Species** E. coli**Package**

100 µg

## Applications

**Observed MW (kDa)** 29 kDa.

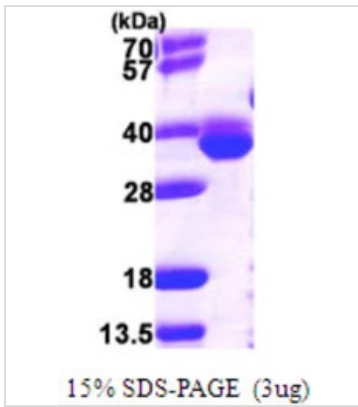
## Properties

**Form** Liquid**Buffer** 20mM Tris-HCl, 10% Glycerol, 2mM DTT**Preservative** No preservative**Storage** Store as concentrated solution. Centrifuge briefly prior to opening vial. For short-term storage (1-2 weeks), store at 4°C. For long-term storage, aliquot and store at -20°C or below. Avoid multiple freeze-thaw cycles.**Concentration** 1 mg/ml (Please refer to the vial label for the specific concentration.)**Region/Sequence**  
Full length protein, N-terminal His-Tag; MGSSHHHHHH SSGLVPRGSH MAISIKTPED IEKMRVAGRL AAEVLEMIEP  
YVKPGVSTGE LDRICNDYIV NEQHAVSACL GYHGYPKVC ISINEWCHG IPDDAKLLKD GDIVNIDVTV IKDGFHGDTS  
KMFIVGKPTI MGERLCRITQ ESLYLALRMV KPGINLREIG AAIQKFVEAE GFSVREYCG HGIGRGFHEE PQVLHYDSRE  
TNVVLKPGMT FTIEPMVNAG KKEIRTMKDG WTVKTKDRSL SAQYEHTIV TDNGCEILTL RKDDTIPAI SHDE**Expression System** E. coli**Purity** > 90% by SDS-PAGE.**Conjugation** Unconjugated**Note** For laboratory research use only. Not for any clinical, therapeutic, or diagnostic use in humans or animals. Not for animal or human consumption.

Purchasers shall not, and agree not to enable third parties to, analyze, copy, reverse engineer or otherwise attempt to determine the structure or sequence of the product.

For full product information, images and publications, please visit our [website](#).

## DATA IMAGES

**GTX57488-pro Image**

3 $\mu$ g map protein (GTX57488-pro) by SDS-PAGE under reducing condition and visualized by coomassie blue stain.



For full product information, images and publications, please visit our [website](#).