

E. coli GroES protein

Cat. No. GTX57496-pro**Species** E. coli**Package**

100 µg

Applications

Observed MW (kDa) 10 kDa.

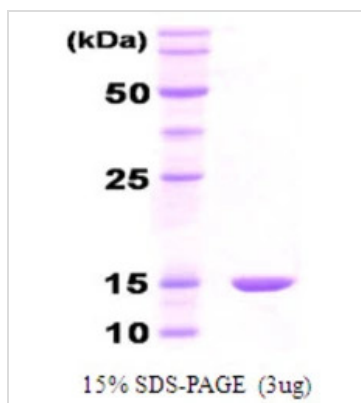
Properties

Form Liquid**Buffer** 25mM Tris-HCl, 100mM NaCl, 10% Glycerol, 5mM DTT**Preservative** No preservative**Storage** Store as concentrated solution. Centrifuge briefly prior to opening vial. For short-term storage (1-2 weeks), store at 4°C. For long-term storage, aliquot and store at -20°C or below. Avoid multiple freeze-thaw cycles.**Concentration** 1 mg/ml (Please refer to the vial label for the specific concentration.)**Region/Sequence** Full length protein, MNIRPLHDRV IVKRKEVETK SAGGIVLTGS AAAKSTRGEV LAVGNRILE NGEVKPLDVK VGDIVFNDG YGVKSEKIDN EEVLIMSESD ILAIVEA**Expression System** E. coli**Purity** > 95% by SDS-PAGE.**Conjugation** Unconjugated**Note**

For laboratory research use only. Not for any clinical, therapeutic, or diagnostic use in humans or animals. Not for animal or human consumption.

Purchasers shall not, and agree not to enable third parties to, analyze, copy, reverse engineer or otherwise attempt to determine the structure or sequence of the product.

DATA IMAGES

**GTX57496-pro Image**

3µg GroES protein (GTX57496-pro) by SDS-PAGE under reducing condition and visualized by coomassie blue stain.

For full product information, images and publications, please visit our [website](#).