

E. coli msrA protein, His tag

Cat. No. GTX57498-pro

Species	E. coli
---------	---------

Package	10 µg
---------	-------

Applications

Observed MW (kDa)	23 kDa.
-------------------	---------

Properties

Form	Liquid
------	--------

Buffer	20mM Tris-HCl, 100mM NaCl, 10% Glycerol, 1mM DTT
--------	--

Preservative	No preservative
--------------	-----------------

Storage	Store as concentrated solution. Centrifuge briefly prior to opening vial. For short-term storage (1-2 weeks), store at 4°C. For long-term storage, aliquot and store at -20°C or below. Avoid multiple freeze-thaw cycles.
---------	--

Concentration	0.5 mg/ml (Please refer to the vial label for the specific concentration.)
---------------	--

Region/Sequence	Full length protein, N-terminal His-Tag; MGSSHHHHHH SSGLVPRGSH MSLFDKKHLV SPADALPGRN TPMPVATLHA VNGHSMTNVP DGMEIAIFAM GCFWGVRLF WQLPGVYSTA AGYTGGYTPN PTYREVCSGD TGHAEAVRIV YDPSVISYEQ LLQVFWENHD PAQGMRRQND HGTQYRSAY PLTPEQDAAA RASLERFQAA MLAADDDRHI TTEIANATPF YYAEDDHQQY LHKNPYGYCG IGGIGVCLPP EA
-----------------	--

Expression System	E. coli
-------------------	---------

Purity	> 90% by SDS-PAGE.
--------	--------------------

Conjugation	Unconjugated
-------------	--------------

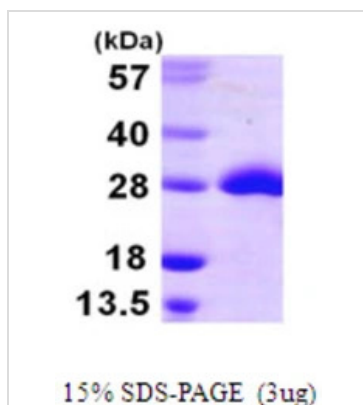
Note	For laboratory research use only. Not for any clinical, therapeutic, or diagnostic use in humans or animals. Not for animal or human consumption.
------	---

Note	Purchasers shall not, and agree not to enable third parties to, analyze, copy, reverse engineer or otherwise attempt to determine the structure or sequence of the product.
------	---



For full product information, images and publications, please visit our [website](#).

DATA IMAGES



GTX57498-pro Image

3μg msrA protein (GTX57498-pro) by SDS-PAGE under reducing condition and visualized by coomassie blue stain.



For full product information, images and publications, please visit our [website](#).