

Dengue virus Envelope protein antibody [GT643]

Cat. No. GTX629117

Host	Mouse
Clonality	Monoclonal
Isotype	IgG2b
Applications	WB, ICC/IF, FCM, IHC-P (cell pellet)
Reactivity	Dengue virus 2, Dengue virus 4

References (7)

Package

100 µl, 25 µl

Applications

Application Note

*Optimal dilutions/concentrations should be determined by the researcher.

Suggested dilution	Recommended dilution
WB	1:500-1:3000
ICC/IF	1:100-1:2000
FCM	Assay dependent
IHC-P (cell pellet)	Assay dependent

Not tested in other applications.

Calculated MW 51-60 kDa. ([Note](#))

Product Note The validated Dengue virus serotype for each application may differ. Please refer to the validated data. This antibody does not cross-react with YFV, JEV, Zika, and CHIKV Envelope protein.

Properties

Form	Liquid
Buffer	PBS
Preservative	No preservative
Storage	Store as concentrated solution. Centrifuge briefly prior to opening vial. For short-term storage (1-2 weeks), store at 4°C. For long-term storage, aliquot and store at -20°C or below. Avoid multiple freeze-thaw cycles.
Concentration	1 mg/ml (Please refer to the vial label for the specific concentration.)
Immunogen	Recombinant protein encompassing a sequence within the center region of Dengue virus Envelope protein (Dengue virus 2 (strain 16681 PDK 53)). The exact sequence is proprietary.
Purification	Affinity purified by Protein G.
Conjugation	Unconjugated

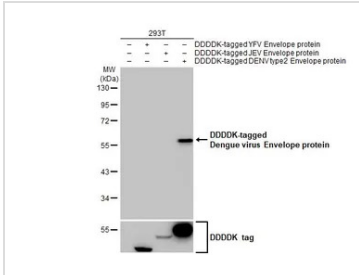


For full product information, images and publications, please visit our [website](#).

For laboratory research use only. Not for any clinical, therapeutic, or diagnostic use in humans or animals. Not for animal or human consumption.

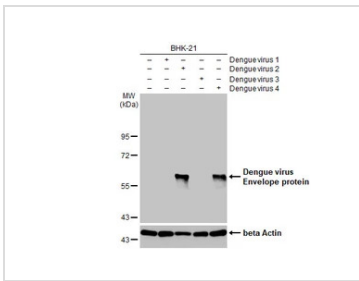
Note
Purchasers shall not, and agree not to enable third parties to, analyze, copy, reverse engineer or otherwise attempt to determine the structure or sequence of the product.

DATA IMAGES



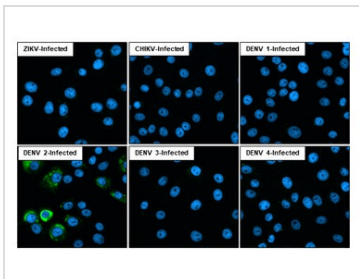
GTX629117 WB Image

Non-transfected (-) and transfected (+) 293T whole cell extracts were separated by 10% SDS-PAGE, and the membrane was blotted with Dengue virus Envelope protein antibody [GT643] (GTX629117) diluted at 1:5000. The HRP-conjugated anti-mouse IgG antibody (GTX213111-01) was used to detect the primary antibody.



GTX629117 WB Image

Non-infected (-) and infected (+) BHK-21 whole cell extracts were separated by 10% SDS-PAGE, and the membrane was blotted with Dengue virus Envelope protein antibody [GT643] (GTX629117) diluted at 1:1000. The HRP-conjugated anti-mouse IgG antibody (GTX213111-01) was used to detect the primary antibody.



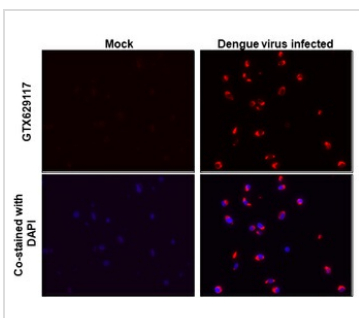
GTX629117 ICC/IF Image

Immunofluorescent analysis of Dengue virus infected cells using Dengue virus Envelope protein antibody [GT643] antibody (GTX629117).

Sample: Multiple virus infected cells slide.

Green: Dengue virus Envelope protein antibody [GT643] antibody (GTX629117) diluted at 1:100.

Blue: Fluoroshield with DAPI (GTX30920).



GTX629117 IHC-P (cell pellet) Image

Dengue virus Envelope protein antibody [GT643] detects Dengue virus Envelope protein protein at cytoplasm by immunohistochemical analysis.

Sample: Paraffin-embedded dengue virus BHK-21.

Red: Dengue virus Envelope protein stained by Dengue virus Envelope protein antibody [GT643] (GTX629117) diluted at 1:2000.

Blue: Fluoroshield with DAPI (GTX30920).

Antigen Retrieval: Citrate buffer, pH 6.0, 15 min



For full product information, images and publications, please visit our [website](#).