

## Influenza A virus Nucleoprotein antibody [GT1236]

**Cat. No. GTX629633**

<b>Host</b>	Mouse
<b>Clonality</b>	Monoclonal
<b>Isotype</b>	IgG2b
<b>Applications</b>	WB, ICC/IF, IHC-Fr, ELISA, Sandwich ELISA
<b>Reactivity</b>	Influenza A virus

References ( 15 )

Package

100 µl, 25 µl

## Applications

**Application Note**

\*Optimal dilutions/concentrations should be determined by the researcher.

Suggested dilution	Recommended dilution
WB	1:1000-1:10000
ICC/IF	1:100-1:1000
IHC-Fr	Assay dependent
ELISA	Assay dependent
Sandwich ELISA	Assay dependent

**Note : Capture: GTX629633, Detection: GTX125989 or Capture: GTX125989, Detection: GTX629633**

Not tested in other applications.

**Calculated MW** 56 kDa. ( [Note](#) )

## Properties

<b>Form</b>	Liquid
<b>Buffer</b>	PBS
<b>Preservative</b>	No preservative
<b>Storage</b>	Store as concentrated solution. Centrifuge briefly prior to opening vial. For short-term storage (1-2 weeks), store at 4°C. For long-term storage, aliquot and store at -20°C or below. Avoid multiple freeze-thaw cycles.
<b>Concentration</b>	1 mg/ml (Please refer to the vial label for the specific concentration.)
<b>Immunogen</b>	Recombinant protein of Influenza A virus Nucleoprotein (A/WSN/1933(H1N1)). The exact sequence is proprietary.
<b>Purification</b>	Affinity purified by Protein G.
<b>Conjugation</b>	Unconjugated

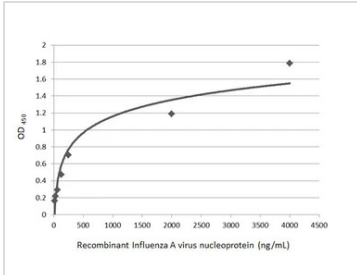


For full product information, images and publications, please visit our [website](#).

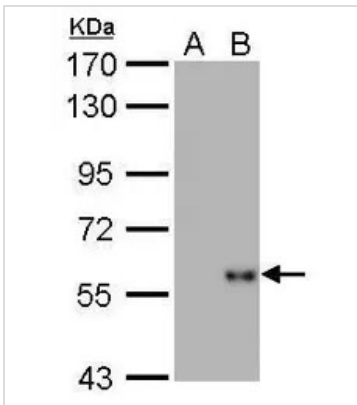
For laboratory research use only. Not for any clinical, therapeutic, or diagnostic use in humans or animals. Not for animal or human consumption.

**Note**

Purchasers shall not, and agree not to enable third parties to, analyze, copy, reverse engineer or otherwise attempt to determine the structure or sequence of the product.

**DATA IMAGES**

**GTX629633 ELISA Image**

Sandwich ELISA detection of recombinant full-length Influenza A virus NP (nucleoprotein) protein, DDDDK tag (GTX135868-pro) using Influenza A virus NP (nucleoprotein) antibody [GT1236] (GTX629633) as capture antibody at concentration of 5 µg/mL and Influenza A virus NP (nucleoprotein) antibody (GTX125989) as detection antibody at concentration of 1 µg/mL. Rabbit IgG antibody (HRP) (GTX213110-01) was diluted at 1:10000 and used to detect the primary antibody.


**GTX629633 WB Image**

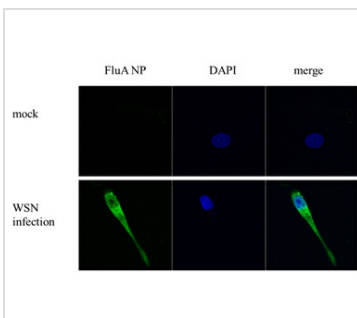
Influenza A Virus NP antibody [GT1236] detects Influenza A Virus NP protein by Western blot analysis.

A. 5 µg DF1 whole cell lysate/extract

B. 5 µg whole cell lysate/extract of WSN virus infected DF1 cells (10 hr)

7.5 % SDS-PAGE

Influenza A Virus NP antibody [GT1236] (GTX629633) dilution: 1:5000

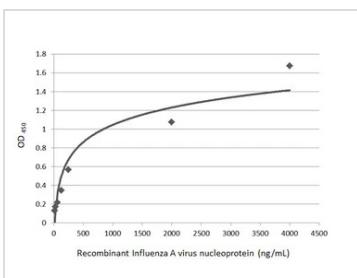

**GTX629633 ICC/IF Image**

Influenza A Virus NP antibody [GT1236] detects Influenza A Virus NP protein by immunofluorescent analysis.

Sample: DF1 cells infected with Influenza A virus (WSN) .

Green: Influenza A Virus NP protein stained by Influenza A Virus NP antibody [GT1236] (GTX629633) diluted at 1:500.

Blue: Hoechst 33342 staining.


**GTX629633 ELISA Image**

Sandwich ELISA detection of recombinant full-length Influenza A virus NP (nucleoprotein) protein, DDDDK tag (GTX135868-pro) using Influenza A virus NP (nucleoprotein) antibody (GTX125989) as capture antibody at concentration of 5 µg/mL and Influenza A virus NP (nucleoprotein) antibody [GT1236] (GTX629633) as detection antibody at concentration of 1 µg/mL. Mouse IgG antibody (HRP) (GTX213111-01) was diluted at 1:10000 and used to detect the primary antibody.



For full product information, images and publications, please visit our [website](https://www.genetex.com).