

Enterovirus D68 VP3 antibody [GT1665]

Cat. No. GTX633706

Host	Mouse
Clonality	Monoclonal
Isotype	IgG1
Applications	WB
Reactivity	Enterovirus D68

References (3)

Package

100 µl, 25 µl

Applications

Application Note

*Optimal dilutions/concentrations should be determined by the researcher.

Suggested dilution	Recommended dilution
WB	1:500-1:3000

Not tested in other applications.

Properties

Form	Liquid
Buffer	PBS
Preservative	No preservative
Storage	Store as concentrated solution. Centrifuge briefly prior to opening vial. For short-term storage (1-2 weeks), store at 4°C. For long-term storage, aliquot and store at -20°C or below. Avoid multiple freeze-thaw cycles.
Concentration	1 mg/ml (Please refer to the vial label for the specific concentration.)
Immunogen	Recombinant protein encompassing a sequence within the center region of Enterovirus D68 VP3. The exact sequence is proprietary.
Purification	Affinity purified by Protein G.
Conjugation	Unconjugated

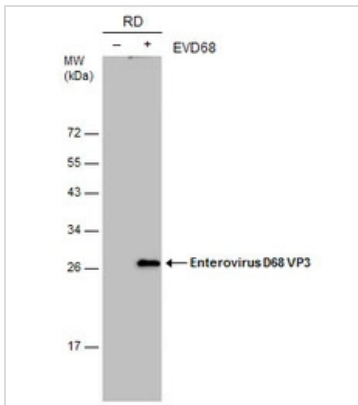
Note

For laboratory research use only. Not for any clinical, therapeutic, or diagnostic use in humans or animals. Not for animal or human consumption.

Purchasers shall not, and agree not to enable third parties to, analyze, copy, reverse engineer or otherwise attempt to determine the structure or sequence of the product.

For full product information, images and publications, please visit our [website](#).

DATA IMAGES

**GTX633706 WB Image**

Non-infected (-) and infected (+) RD whole cell extracts (15 µg) were separated by 12% SDS-PAGE, and the membrane was blotted with Enterovirus D68 VP3 antibody [GT1665] (GTX633706) diluted at 1:1000.



For full product information, images and publications, please visit our [website](#).