

Influenza A virus Nucleoprotein antibody [HL1103]

Cat. No. GTX636318

Host	Rabbit
Clonality	Monoclonal
Isotype	IgG
Applications	WB, ICC/IF, ELISA, Lateral Flow, Sandwich ELISA, IHC-P (cell pellet)
Reactivity	Influenza A virus

References (1)

★★★★★ Review (2)

Package

100 µl, 25 µl

Applications

Application Note

*Optimal dilutions/concentrations should be determined by the researcher.

Suggested dilution	Recommended dilution
WB	Assay dependent
ICC/IF	Assay dependent
ELISA	Assay dependent
Lateral Flow	Assay dependent
Sandwich ELISA	Assay dependent
IHC-P (cell pellet)	Assay dependent

Note : Capture : GTX636318, Detection : GTX636199 / GTX636247 or Capture : GTX636199 / GTX636247 / GTX636282, Detection : GTX636318.**Please notice that the detection antibodies need to be conjugated to HRP when paired with the capture antibodies. A Please contact us for custom HRP-conjugated antibody.**

Not tested in other applications.

Product Note

This antibody is specific for Influenza A virus Nucleoprotein protein (H1N1, H3N2, H5N8, and H10N3), and it does not cross-react with Influenza B virus Nucleoprotein protein.

Properties

Form	Liquid
Buffer	PBS
Preservative	No preservative
Storage	Store as concentrated solution. Centrifuge briefly prior to opening vial. For short-term storage (1-2 weeks), store at 4°C. For long-term storage, aliquot and store at -20°C or below. Avoid multiple freeze-thaw cycles.
Concentration	1 mg/ml (Please refer to the vial label for the specific concentration.)
Immunogen	Recombinant protein encompassing a sequence within the center region of Influenza A virus Nucleoprotein (A/Kansas/14/2017(H3N2)). The exact sequence is proprietary.

For full product information, images and publications, please visit our [website](#).

Date 2025 / 04 / 15 Page 1 of 2

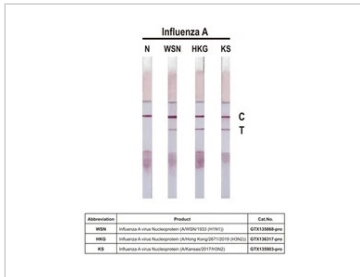
Purification Affinity purified by Protein A.

Conjugation Unconjugated

For laboratory research use only. Not for any clinical, therapeutic, or diagnostic use in humans or animals. Not for animal or human consumption.

Note Purchasers shall not, and agree not to enable third parties to, analyze, copy, reverse engineer or otherwise attempt to determine the structure or sequence of the product.

DATA IMAGES

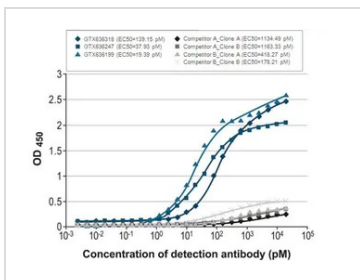


GTX636318 Lateral Flow Image

Detection of recombinant influenza A virus nucleoproteins of the indicated strains by lateral flow assay using the recombinant rabbit monoclonal antibody pair.

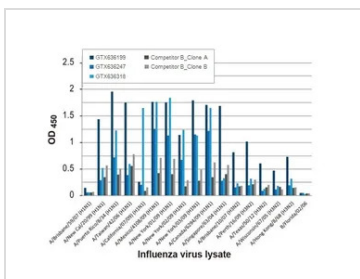
Capture: Influenza A virus Nucleoprotein antibody [HL1089] (GTX636247)

Detection: Influenza A virus Nucleoprotein antibody [HL1103] (GTX636318)



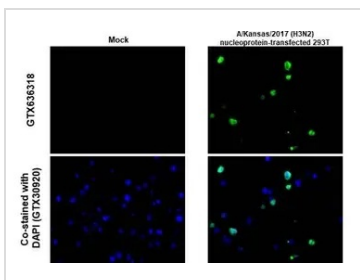
GTX636318 ELISA Image

Indirect ELISA analysis was performed by coating a plate with recombinant influenza A virus nucleoprotein (A/Kansas/2017/H3N2), DDDDK Tag (GTX135903-pro) (50 ng), and probing with the specified influenza A virus nucleoprotein antibodies at the indicated concentrations. Goat anti-rabbit IgG antibody (HRP) (GTX213110-01) (1:10000) or goat anti-mouse IgG antibody (HRP) (GTX213111-01) (1:10000) were used to detect the bound primary antibodies.



GTX636318 ELISA Image

Indirect ELISA analysis was performed by coating a plate with viral lysates (1 µg) derived from different strains of influenza A virus or influenza B virus and probing with the specified influenza A virus nucleoprotein antibodies (1 µg/ml). Goat anti-rabbit IgG antibody (HRP) (GTX213110-01) (1:10000) or goat anti-mouse IgG antibody (HRP) (GTX213111-01) (1:10000) were used to detect the bound primary antibodies.



GTX636318 IHC-P (cell pellet) Image

Influenza A virus Nucleoprotein antibody [HL1089] detects Influenza A virus Nucleoprotein protein at cytoplasm by immunohistochemical analysis.

Sample: Paraffin-embedded flu A_NP (Kansas/2017/H3N2) transfected 293T cell FFPE Cell Pellet Block.
Green: Influenza A virus Nucleoprotein stained by Influenza A virus Nucleoprotein antibody [HL1089] (GTX636318) diluted at 1:1000.

Antigen Retrieval: Citrate buffer, pH 6.0, 15 min



For full product information, images and publications, please visit our [website](http://www.genetex.com).