

Influenza A virus M1 (matrix protein) antibody [HL1275]

Cat. No. GTX636677

| | |
|---------------------|---------------------------------|
| Host | Rabbit |
| Clonality | Monoclonal |
| Isotype | IgG |
| Applications | WB, ICC/IF, IHC-P (cell pellet) |
| Reactivity | Influenza A virus |

References (1)

Package

100 µl, 25 µl

Applications

Application Note

*Optimal dilutions/concentrations should be determined by the researcher.

| Suggested dilution | Recommended dilution |
|---------------------|----------------------|
| WB | 1:1000-1:10000 |
| ICC/IF | Assay dependent |
| IHC-P (cell pellet) | Assay dependent |

Not tested in other applications.

Properties

| | |
|----------------------|--|
| Form | Liquid |
| Buffer | PBS |
| Preservative | No preservative |
| Storage | Store as concentrated solution. Centrifuge briefly prior to opening vial. For short-term storage (1-2 weeks), store at 4°C. For long-term storage, aliquot and store at -20°C or below. Avoid multiple freeze-thaw cycles. |
| Concentration | 1 mg/ml (Please refer to the vial label for the specific concentration.) |
| Immunogen | Recombinant fragment corresponding to C-terminal region of Influenza A virus M1 (A/Puerto Rico/8/1934(H1N1)). The exact sequence is proprietary. |
| Purification | Affinity purified by Protein A. |
| Conjugation | Unconjugated |

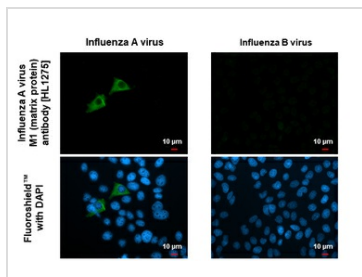
Note

For laboratory research use only. Not for any clinical, therapeutic, or diagnostic use in humans or animals. Not for animal or human consumption.

Purchasers shall not, and agree not to enable third parties to, analyze, copy, reverse engineer or otherwise attempt to determine the structure or sequence of the product.

For full product information, images and publications, please visit our [website](#).

DATA IMAGES



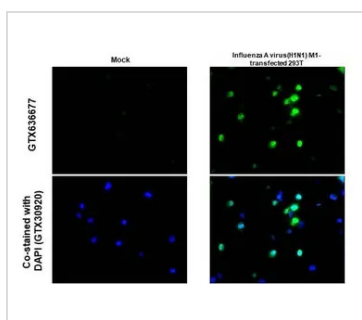
GTX636677 ICC/IF Image

Immunofluorescent analysis of Influenza virus infected cells using Influenza A virus M1 (matrix protein) antibody [HL1275] (GTX636677).

Sample: Influenza A and B virus infected cells slide.

Green: Influenza A virus M1 (matrix protein) antibody [HL1275] (GTX636677) diluted at 1:100.

Blue: Fluoroshield with DAPI (GTX30920).



GTX636677 IHC-P (cell pellet) Image

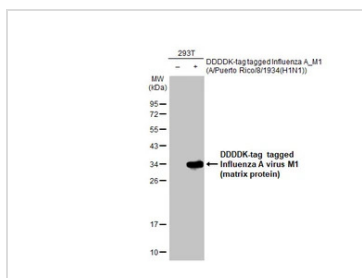
Influenza A virus M1 (matrix protein) antibody [HL1275] detects Influenza A virus M1 (matrix protein) protein at cytoplasm by immunohistochemical analysis.

Sample: Paraffin-embedded Influenza A virus M1 transfected 293T.

Green: Influenza A virus M1 (matrix protein) stained by Influenza A virus M1 (matrix protein) antibody [HL1275] (GTX636677) diluted at 1:1000.

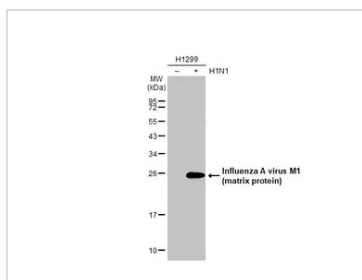
Blue: Fluoroshield with DAPI (GTX30920).

Antigen Retrieval: Citrate buffer, pH 6.0, 15 min



GTX636677 WB Image

Non-transfected (–) and transfected (+) 293T whole cell extracts (30 μg) were separated by 12% SDS-PAGE, and the membrane was blotted with Influenza A virus M1 (matrix protein) antibody [HL1275] (GTX636677) diluted at 1:50000. The HRP-conjugated anti-rabbit IgG antibody (GTX213110-01) was used to detect the primary antibody.



GTX636677 WB Image

Non-infected (–) and infected (+) H1299 whole cell extracts (15 μg) were separated by 12% SDS-PAGE, and the membrane was blotted with Influenza A virus M1 (matrix protein) antibody [HL1275] (GTX636677) diluted at 1:5000. The HRP-conjugated anti-rabbit IgG antibody (GTX213110-01) was used to detect the primary antibody.



For full product information, images and publications, please visit our [website](https://www.genetex.com).