

Venezuelan Equine Encephalitis Virus nsP1 antibody [HL1472]

Cat. No. GTX636946

| | |
|---------------------|--------------------------------------|
| Host | Rabbit |
| Clonality | Monoclonal |
| Isotype | IgG |
| Applications | WB, ICC/IF, IHC-P (cell pellet) |
| Reactivity | Venezuelan equine encephalitis virus |

Package
100 µl, 25 µl

Applications

Application Note

*Optimal dilutions/concentrations should be determined by the researcher.

| Suggested dilution | Recommended dilution |
|---------------------|----------------------|
| WB | 1:1000-1:10000 |
| ICC/IF | Assay dependent |
| IHC-P (cell pellet) | Assay dependent |

Not tested in other applications.

Properties

| | |
|----------------------|--|
| Form | Liquid |
| Buffer | PBS |
| Preservative | No preservative |
| Storage | Store as concentrated solution. Centrifuge briefly prior to opening vial. For short-term storage (1-2 weeks), store at 4°C. For long-term storage, aliquot and store at -20°C or below. Avoid multiple freeze-thaw cycles. |
| Concentration | 1 mg/ml (Please refer to the vial label for the specific concentration.) |
| Immunogen | Recombinant protein encompassing a sequence within the N-term region of Venezuelan equine encephalitis virus nsp1. (Strain P676) |
| Purification | Affinity purified by Protein A. |
| Conjugation | Unconjugated |

Note

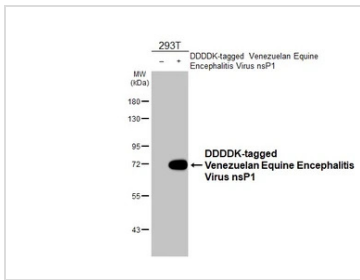
For laboratory research use only. Not for any clinical, therapeutic, or diagnostic use in humans or animals. Not for animal or human consumption.

Purchasers shall not, and agree not to enable third parties to, analyze, copy, reverse engineer or otherwise attempt to determine the structure or sequence of the product.



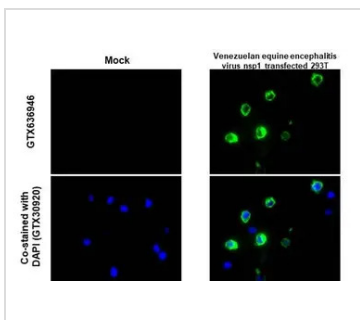
For full product information, images and publications, please visit our [website](#).

DATA IMAGES



GTX636946 WB Image

Non-transfected (-) and transfected (+) 293T whole cell extracts (30 µg) were separated by 7.5% SDS-PAGE, and the membrane was blotted with Venezuelan Equine Encephalitis Virus nsP1 antibody [HL1472] (GTX636946) diluted at 1:10000. The HRP-conjugated anti-rabbit IgG antibody (GTX213110-01) was used to detect the primary antibody.



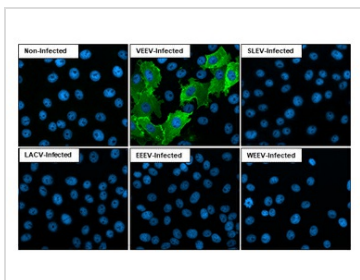
GTX636946 IHC-P (cell pellet) Image

Venezuelan equine encephalitis virus nsP1 antibody [HL1472] detects Venezuelan equine encephalitis virus nsP1 protein at cytoplasm by immunohistochemical analysis.

Sample: Paraffin-embedded mock and Venezuelan equine encephalitis virus nsP1 transfected 293T cell pellet.

Green: Venezuelan equine encephalitis virus nsP1 stained by Venezuelan equine encephalitis virus nsP1 antibody [HL1472] (GTX636946) diluted at 1:1000.

Antigen Retrieval: Citrate buffer, pH 6.0, 15 min



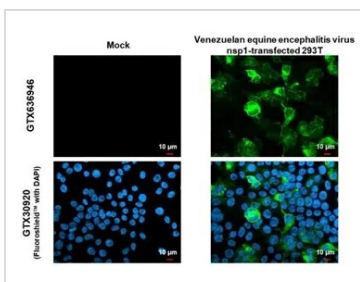
GTX636946 ICC/IF Image

Immunofluorescent analysis of Venezuelan equine encephalitis virus infected cells using Venezuelan Equine Encephalitis Virus nsP1 antibody [HL1472] (GTX636946).

Sample: Multiple virus infected cells slide.

Green: Venezuelan Equine Encephalitis Virus nsP1 antibody [HL1472] (GTX636946) diluted at 1:100.

Blue: Fluoroshield with DAPI (GTX30920).



GTX636946 ICC/IF Image

Venezuelan equine encephalitis virus nsP1 antibody [HL1472] detects Venezuelan equine encephalitis virus nsP1 protein by immunofluorescent analysis.

Sample: Mock and transfected 293T cells were fixed in 4% paraformaldehyde at RT for 15 min.

Green: Venezuelan equine encephalitis virus nsP1 stained by Venezuelan equine encephalitis virus nsP1 antibody [HL1472] (GTX636946) diluted at 1:500.

Blue: Fluoroshield with DAPI (GTX30920).



For full product information, images and publications, please visit our [website](#).