

Human Papillomavirus type 16 E7 antibody [HL1647]

Cat. No. GTX637228

| | |
|---------------------|---|
| Host | Rabbit |
| Clonality | Monoclonal |
| Isotype | IgG |
| Applications | ICC/IF, ELISA, Lateral Flow, Sandwich ELISA |
| Reactivity | Human papillomavirus type 16 |

Package
100 µl, 25 µl

Applications

Application Note

*Optimal dilutions/concentrations should be determined by the researcher.

| Suggested dilution | Recommended dilution |
|--------------------|----------------------|
| ICC/IF | Assay dependent |
| ELISA | Assay dependent |
| Lateral Flow | Assay dependent |
| Sandwich ELISA | Assay dependent |

Note : Capture : GTX637546 / GTX637228, Detection : GTX637228 / GTX637546. Please notice that GTX637228 / GTX637546 needs to be conjugated to HRP to function as the detection antibody when paired with GTX637546 / GTX637228. Please contact us for custom HRP-conjugated antibody

Not tested in other applications.

Product Note

This antibody was raised against Human Papillomavirus type 16 E7, and it does not cross-react with Human Papillomavirus type 18 E7.

Properties

| | |
|----------------------|--|
| Form | Liquid |
| Buffer | PBS |
| Preservative | No preservative |
| Storage | Store as concentrated solution. Centrifuge briefly prior to opening vial. For short-term storage (1-2 weeks), store at 4°C. For long-term storage, aliquot and store at -20°C or below. Avoid multiple freeze-thaw cycles. |
| Concentration | 2 mg/ml (Please refer to the vial label for the specific concentration.) |
| Immunogen | Full length Human Papillomavirus type 16 E7 recombinant protein |
| Purification | Affinity purified by Protein A. |
| Conjugation | Unconjugated |



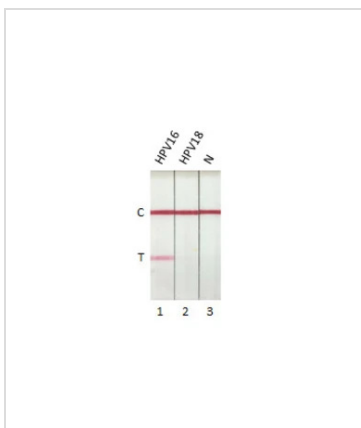
For full product information, images and publications, please visit our [website](#).

For laboratory research use only. Not for any clinical, therapeutic, or diagnostic use in humans or animals. Not for animal or human consumption.

Note

Purchasers shall not, and agree not to enable third parties to, analyze, copy, reverse engineer or otherwise attempt to determine the structure or sequence of the product.

DATA IMAGES



GTX637228 Lateral Flow Image

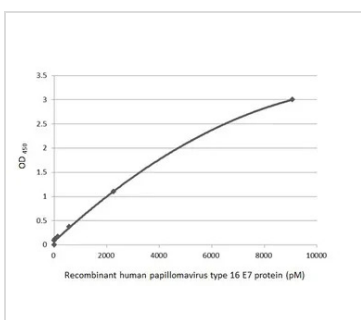
Detection of Human Papillomavirus type 16 E7 protein by lateral flow assay using the monoclonal antibody pair.

Capture: Human Papillomavirus type 16 E7 antibody (GTX637228 [HL1647])

Detection: Human Papillomavirus type 16 E7 antibody (GTX637546 [HL1821])

Samples (10 ng) :

1. HPV16 E7 protein (GTX133411-pro)
2. HPV18 E7 protein (GTX133412-pro)
3. Lysis buffer



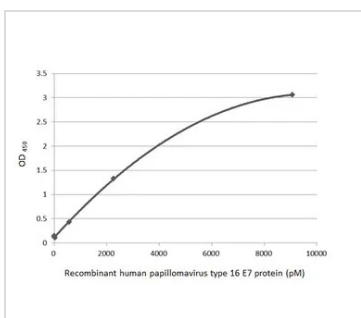
GTX637228 ELISA Image

Sandwich ELISA detection of recombinant Human Papillomavirus type 16 E7 protein, His tag (GTX133411-pro) using antibodies as below.

Capture: Human Papillomavirus type 16 E7 antibody [HL1647] (GTX637228) (5 µg/mL)

Detection: HRP-conjugated Human Papillomavirus type 16 E7 antibody [HL1821] (GTX637546) (1 µg/mL)

Please notice that GTX637546 needs to be conjugated to HRP to function as the detection antibody when paired with GTX637228. Please contact us for custom HRP-conjugated antibody.



GTX637228 ELISA Image

Sandwich ELISA detection of recombinant Human Papillomavirus type 16 E7 protein, His tag (GTX133411-pro) using antibodies as below.

Capture: Human Papillomavirus type 16 E7 antibody [HL1821] (GTX637546) (5 µg/mL)

Detection: HRP-conjugated Human Papillomavirus type 16 E7 antibody [HL1647] (GTX637228) (1 µg/mL)

Please notice that GTX637228 needs to be conjugated to HRP to function as the detection antibody when paired with GTX637546. Please contact us for custom HRP-conjugated antibody.



For full product information, images and publications, please visit our [website](#).