

## Human Papillomavirus type 18 E7 antibody [HL2522]

**Cat. No. GTX638883**

<b>Host</b>	Rabbit
<b>Clonality</b>	Monoclonal
<b>Isotype</b>	IgG
<b>Applications</b>	WB, ELISA, Lateral Flow, Sandwich ELISA
<b>Reactivity</b>	Human papillomavirus type 18

**Package**  
100 µl, 25 µl

## Applications

**Application Note**

\*Optimal dilutions/concentrations should be determined by the researcher.

Suggested dilution	Recommended dilution
WB	1:500-1:3000
ELISA	Assay dependent
Lateral Flow	Assay dependent
Sandwich ELISA	Assay dependent

**Note : Capture : GTX638883, Detection : GTX634337 / GTX639657.**

**Capture : GTX638883, Detection : GTX634337 or Capture : GTX634337, Detection : GTX638883.**

Not tested in other applications.

**Product Note** This antibody is specific for Human Papillomavirus type 18 E7 protein, and it does not cross-react with Human Papillomavirus type 16 E7 protein.

## Properties

<b>Form</b>	Liquid
<b>Buffer</b>	PBS
<b>Preservative</b>	No preservative
<b>Storage</b>	Store as concentrated solution. Centrifuge briefly prior to opening vial. For short-term storage (1-2 weeks), store at 4°C. For long-term storage, aliquot and store at -20°C or below. Avoid multiple freeze-thaw cycles.
<b>Concentration</b>	1 mg/ml (Please refer to the vial label for the specific concentration.)
<b>Immunogen</b>	Full length Human Papillomavirus type 18 E7.
<b>Purification</b>	Affinity purified by Protein A.
<b>Conjugation</b>	Unconjugated



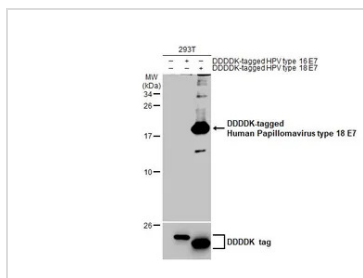
For full product information, images and publications, please visit our [website](#).

For laboratory research use only. Not for any clinical, therapeutic, or diagnostic use in humans or animals. Not for animal or human consumption.

**Note**

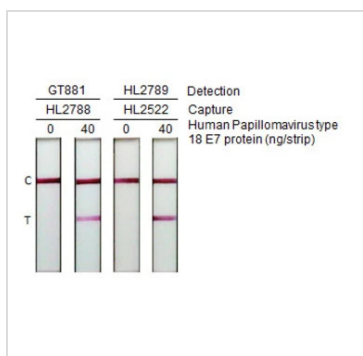
Purchasers shall not, and agree not to enable third parties to, analyze, copy, reverse engineer or otherwise attempt to determine the structure or sequence of the product.

DATA IMAGES



**GTX638883 WB Image**

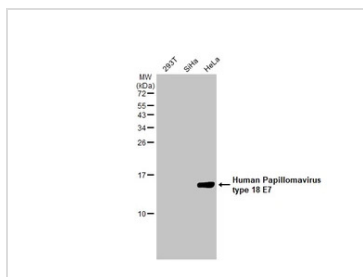
Non-transfected (-) and transfected (+) 293T whole cell extracts (30 µg) were separated by 15% SDS-PAGE, and the membrane was blotted with Human Papillomavirus type 18 E7 antibody [HL2522] (GTX638883) diluted at 1:1000. The HRP-conjugated anti-rabbit IgG antibody (GTX213110-01) was used to detect the primary antibody.



**GTX638883 Lateral Flow Image**

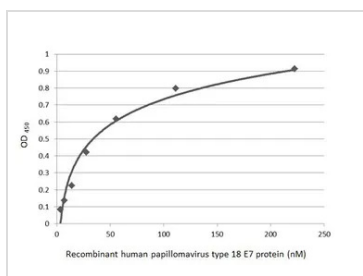
Detection of Human Papillomavirus type 18 E7 protein by lateral flow assay using the indicated recombinant monoclonal antibodies.

- GT881 : Human Papillomavirus type 18 E7 antibody [GT881] (GTX634337)
- HL2788 : Human Papillomavirus type 18 E7 antibody [HL2788] (GTX639656)
- HL2789 : Human Papillomavirus type 18 E7 antibody [HL2789] (GTX639657)
- HL2522 : Human Papillomavirus type 18 E7 antibody [HL2522] (GTX638883)
- Samples (40 ng) : Recombinant full-length Papillomavirus type 18 E7 protein



**GTX638883 WB Image**

Various whole cell extracts (30 µg) were separated by 15% SDS-PAGE, and the membrane was blotted with Human Papillomavirus type 18 E7 antibody [HL2522] (GTX638883) diluted at 1:1000. The HRP-conjugated anti-rabbit IgG antibody (GTX213110-01) was used to detect the primary antibody.



**GTX638883 ELISA Image**

Sandwich ELISA detection of recombinant Human Papillomavirus type 18 E7 protein, His tag (GTX133412-pro) using antibodies as below.

- Capture:** Human Papillomavirus type 18 E7 antibody [HL2522] (GTX638883) (5 µg/mL)
- Detection:** Human Papillomavirus type 18 E7 antibody [GT881] (GTX634337) (1 µg/mL)



For full product information, images and publications, please visit our [website](#).