

PRRS virus M protein antibody [HL2619]

Cat. No. GTX639073

Host	Rabbit
Clonality	Monoclonal
Isotype	IgG
Applications	WB, IHC-P
Reactivity	PRRS virus

Package
100 µl, 25 µl

Applications

Application Note

*Optimal dilutions/concentrations should be determined by the researcher.

Suggested dilution	Recommended dilution
WB	1:500-1:3000
IHC-P	Assay dependent

Not tested in other applications.

Properties

Form	Liquid
Buffer	PBS
Preservative	No preservative
Storage	Store as concentrated solution. Centrifuge briefly prior to opening vial. For short-term storage (1-2 weeks), store at 4°C. For long-term storage, aliquot and store at -20°C or below. Avoid multiple freeze-thaw cycles.
Concentration	1 mg/ml (Please refer to the vial label for the specific concentration.)
Immunogen	Recombinant fragment of PRRS virus M protein (Strain: VR-2332)
Purification	Affinity purified by Protein A.
Conjugation	Unconjugated

Note

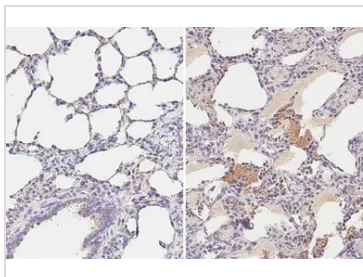
For laboratory research use only. Not for any clinical, therapeutic, or diagnostic use in humans or animals. Not for animal or human consumption.

Purchasers shall not, and agree not to enable third parties to, analyze, copy, reverse engineer or otherwise attempt to determine the structure or sequence of the product.



For full product information, images and publications, please visit our [website](#).

DATA IMAGES

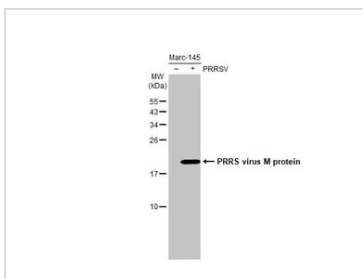
**GTX639073 IHC-P Image**

PRRS virus M protein antibody [HL2619] detects PRRS virus M protein protein by immunohistochemical analysis.

Sample: Paraffin-embedded PRRS virus free (left) and infected (right) swine lung.

PRRS virus M protein stained by PRRS virus M protein antibody [HL2619] (GTX639073) diluted at 1:100.

Antigen Retrieval: Citrate buffer, pH 6.0, 15 min

**GTX639073 WB Image**

Non-infected (-) and infected (+) Marc-145 whole cell extracts (5 µg) were separated by 15% SDS-PAGE, and the membrane was blotted with PRRS virus M protein antibody [HL2619] (GTX639073) diluted at 1:1000. The HRP-conjugated anti-rabbit IgG antibody (GTX213110-01) was used to detect the primary antibody.



For full product information, images and publications, please visit our [website](#).