

## E. coli LT toxin antibody

**Cat. No. GTX64109**

<b>Host</b>	Rabbit
<b>Clonality</b>	Polyclonal
<b>Isotype</b>	IgG
<b>Applications</b>	WB, IP
<b>Reactivity</b>	E. coli

**Package**  
100 µl

## Applications

**Application Note**

Western blotting (1:2,000-1:10,000 dilution)

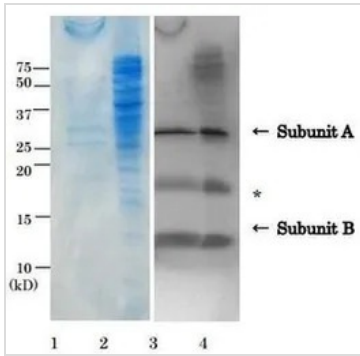
## Properties

<b>Form</b>	Liquid
<b>Buffer</b>	Serum
<b>Preservative</b>	0.09% Sodium azide
<b>Storage</b>	Store as concentrated solution. Centrifuge briefly prior to opening vial. For short-term storage (1-2 weeks), store at 4°C. For long-term storage, aliquot and store at -20°C or below. Avoid multiple freeze-thaw cycles.
<b>Concentration</b>	Batch dependent (Please refer to the vial label for the specific concentration.)
<b>Immunogen</b>	Initial immunization with LT toxoid and booster with LT toxin.
<b>Conjugation</b>	Unconjugated
<b>Note</b>	<p>For laboratory research use only. Not for any clinical, therapeutic, or diagnostic use in humans or animals. Not for animal or human consumption.</p> <p>Purchasers shall not, and agree not to enable third parties to, analyze, copy, reverse engineer or otherwise attempt to determine the structure or sequence of the product.</p>



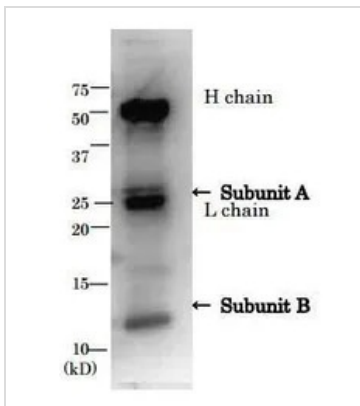
For full product information, images and publications, please visit our [website](#).

DATA IMAGES



**GTX64109 WB Image**

Detection LT in culture medium and crude extract of ETEC cells by western blotting, using anti-LT antibody  
 Samples 1. SDS-PAGE of the culture medium of ETEC, CBB stained. 2. SDS-PAGE of the crude extract of ETEC cells, CBB stained. 3. Western Blotting of the culture medium 4. Westerns blotting of crude extract of ETEC cells. \* Indicates a non-specific protein band.



**GTX64109 IP Image**

Immunoprecipitation of LT from culture medium of ETEC by using anti-LT antibody H chain and L chain indicate heavy chain and light chain of IgG, respectively.



For full product information, images and publications, please visit our [website](#).