

# HIV1 Nef antibody

**Cat. No. GTX64123**

<b>Host</b>	Rabbit
<b>Clonality</b>	Polyclonal
<b>Isotype</b>	IgG
<b>Applications</b>	WB, IP, Dot, ELISA
<b>Reactivity</b>	Human Immunodeficiency virus

**Package**  
100 µl

## Applications

### Application Note

Western blot (1:1,000-1:3,000), Dot blot (1:3000)

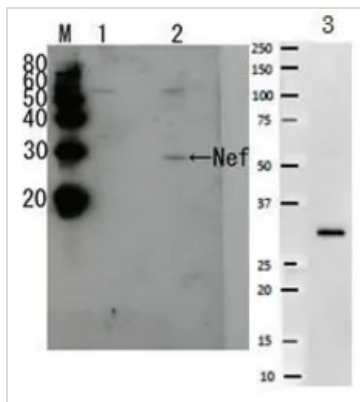
## Properties

<b>Form</b>	Liquid
<b>Buffer</b>	Serum
<b>Preservative</b>	0.09% Sodium azide
<b>Storage</b>	Store as concentrated solution. Centrifuge briefly prior to opening vial. For short-term storage (1-2 weeks), store at 4°C. For long-term storage, aliquot and store at -20°C or below. Avoid multiple freeze-thaw cycles.
<b>Concentration</b>	Batch dependent (Please refer to the vial label for the specific concentration.)
<b>Immunogen</b>	Purified full-size recombinant Nef of HIV-1 group M, subtype B expressed in E. coli
<b>Conjugation</b>	Unconjugated
<b>Note</b>	<p>For laboratory research use only. Not for any clinical, therapeutic, or diagnostic use in humans or animals. Not for animal or human consumption.</p> <p>Purchasers shall not, and agree not to enable third parties to, analyze, copy, reverse engineer or otherwise attempt to determine the structure or sequence of the product.</p>



For full product information, images and publications, please visit our [website](#).

## DATA IMAGES



### GTx64123 WB Image

Detection of HIV-1 and HIV-2 Nef by Western blotting Lane1: Extract of MT4 cells Lane 2: Extract of MT4 cells infected with HIV-1(LAI strain) Lane 3: Extract of HIV-2 (strain UC2) infected cell The antiserum was diluted 1,000 fold before use.



For full product information, images and publications, please visit our [website](https://www.genetex.com).