

HIV1 p15 antibody

Cat. No. GTX64125

Host	Rabbit
Clonality	Polyclonal
Isotype	IgG
Applications	WB, IP, Dot, ELISA
Reactivity	Human Immunodeficiency virus

Package
100 µl

Applications

Application Note

Western blot (1:1000-1:5000)

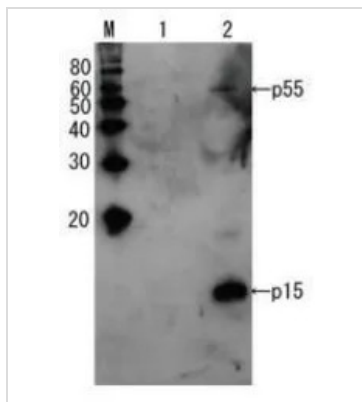
Properties

Form	Liquid
Buffer	Serum
Preservative	0.09% Sodium azide
Storage	Store as concentrated solution. Centrifuge briefly prior to opening vial. For short-term storage (1-2 weeks), store at 4°C. For long-term storage, aliquot and store at -20°C or below. Avoid multiple freeze-thaw cycles.
Concentration	Batch dependent (Please refer to the vial label for the specific concentration.)
Immunogen	Purified full-size recombinant Gag p15 of HIV-1 subtype B expressed in E. coli
Conjugation	Unconjugated
Note	<p>For laboratory research use only. Not for any clinical, therapeutic, or diagnostic use in humans or animals. Not for animal or human consumption.</p> <p>Purchasers shall not, and agree not to enable third parties to, analyze, copy, reverse engineer or otherwise attempt to determine the structure or sequence of the product.</p>



For full product information, images and publications, please visit our [website](#).

DATA IMAGES



GTX64125 WB Image

Detection of HIV-1 p15 and its p55 precursor protein by Western blotting using the anti-p15 antibody. Lane1: Extract of MT4 cells Lane2: Extract of MT4 cells infected with HIV-1 (LAI strain) The antiserum was diluted 1,000 fold before use.



For full product information, images and publications, please visit our [website](https://www.genetex.com).