

HIV1 Reverse transcriptase antibody

Cat. No. GTX64134

Host	Guinea pig
Clonality	Polyclonal
Isotype	IgG
Applications	WB, IP, Dot, ELISA
Reactivity	Human Immunodeficiency virus

Package
100 µl

Applications

Application Note

*Optimal dilutions/concentrations should be determined by the researcher.

Suggested dilution	Recommended dilution
WB	Assay dependent
IP	Assay dependent
Dot	Assay dependent
ELISA	Assay dependent

Not tested in other applications.

Properties

Form	Liquid
Buffer	Serum
Preservative	0.09% Sodium azide
Storage	Store as concentrated solution. Centrifuge briefly prior to opening vial. For short-term storage (1-2 weeks), store at 4°C. For long-term storage, aliquot and store at -20°C or below. Avoid multiple freeze-thaw cycles.
Concentration	Batch dependent (Please refer to the vial label for the specific concentration.)
Immunogen	Functional full-size recombinant reverse transcriptase of HIV-1 expressed and purified from E. coli
Conjugation	Unconjugated

Note

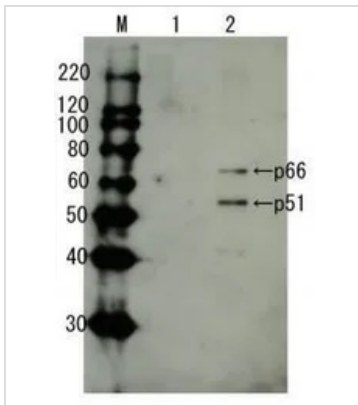
For laboratory research use only. Not for any clinical, therapeutic, or diagnostic use in humans or animals. Not for animal or human consumption.

Purchasers shall not, and agree not to enable third parties to, analyze, copy, reverse engineer or otherwise attempt to determine the structure or sequence of the product.



For full product information, images and publications, please visit our [website](#).

DATA IMAGES

**GTX64134 WB Image**

Detection of HIV-1 reverse transcriptase by Western blotting using anti-HIV transcriptase antibody. Lane 1: Extract of MT4 cells Lane 2: Extract of MT4 cells infected with HIV-1 (LAI strain) The antiserum was diluted 2,500 fold before use.



For full product information, images and publications, please visit our [website](#).