

SlyD protein (active)

Cat. No. GTX66883-pro

Applications Functional Assay

Species E. coli

Package

100 µg

Applications

Application Note

Specific activity is > 700 nmol/min/mg, and is defined as the amount of enzyme cleaves 1nmol of suc-AAFP-PNA per minute at 37°C in Tris-HCl (pH 8.0) using chymotrypsin.

Properties

Form Liquid

Buffer 20mM Tris

Preservative No preservative

Storage Store as concentrated solution. Centrifuge briefly prior to opening vial. For short-term storage (1-2 weeks), store at 4°C. For long-term storage, aliquot and store at -20°C or below. Avoid multiple freeze-thaw cycles.

Concentration 1 mg/ml (Please refer to the vial label for the specific concentration.)

Region/Sequence Length: 196 a.a. Sequence: MKVAKDLVVS LAYQVRTEDG VLVDESPVSA PLDYLHGHGS LISGLETALE GHEVGDKFDV AVGANDAYGQ YDENLVQRVP KDVFMGVDEL QVGMRFLEET DQGPVPVEIT AVEDDHVVVD GNHMLAGQNL KFNVEVVAIR EATEEELAHG HVHGAHDHHH DHDHGGCCGG HGHDHGHEHG GEGCCGGKGN GGCGCH

Expression System E. coli

Purity > 95% by SDS-PAGE.

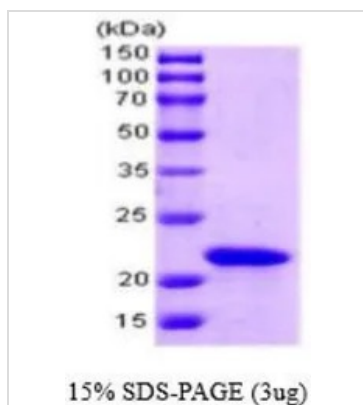
Conjugation Unconjugated

Note For In vitro laboratory use only. Not for any clinical, therapeutic, or diagnostic use in humans or animals. Not for animal or human consumption.



For full product information, images and publications, please visit our [website](#).

DATA IMAGES



GTX66883-pro Image

3 μ g of GTX66883-pro SlyD protein (active) by SDS-PAGE under reducing condition and visualized by coomassie blue stain



For full product information, images and publications, please visit our [website](https://www.genetex.com).