

# SodA protein, His tag (active)

**Cat. No. GTX66889-pro**

**Applications** Functional Assay

**Species** E. coli

**Package**

100 µg

## Applications

### Application Note

Specific activity is > 300 units/mg, in which one unit will inhibit the rate of reduction of cytochrome c by 50% in a coupled system, using xanthine and Xanthine oxidase at pH 7.5 at 25°C.

## Properties

**Form** Liquid

**Buffer** 20mM Tris-HCl, 100mM NaCl, 10% Glycerol, 1mM DTT

**Preservative** No preservative

**Storage** Store as concentrated solution. Centrifuge briefly prior to opening vial. For short-term storage (1-2 weeks), store at 4°C. For long-term storage, aliquot and store at -20°C or below. Avoid multiple freeze-thaw cycles.

**Concentration** 1 mg/ml (Please refer to the vial label for the specific concentration.)

**Region/Sequence** Full length protein, N-terminal His-Tag; Length: 226 a.a. Sequence: MGSSHHHHHH SSGLVPRGSH MSYTLPSLPY AYDALEPHFD KQTMEIHHTK HHQTYVNNAN AALESLEPEA NLPVEELITK LDQLPADKKT VLRNNAGGHA NHSLFWKGLK KGTTLQGDLEK AAIERDFGSV DNFKAEFEKA AASRFGSGWA WLVLKGDKLA VVSTANQDSP LMGEAISGAS GFPIMGLDWW EHAYYLKFQN RRPDIKEFW NVVNWDEAAA RFAAKK

**Expression System** E. coli

**Purity** > 95% by SDS-PAGE.

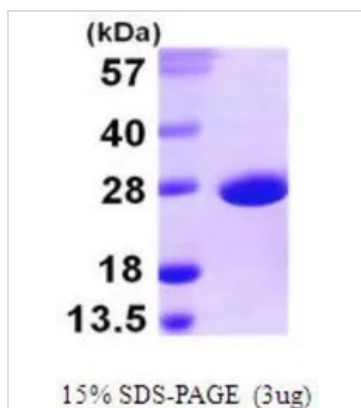
**Conjugation** Unconjugated

**Note** For In vitro laboratory use only. Not for any clinical, therapeutic, or diagnostic use in humans or animals. Not for animal or human consumption.



For full product information, images and publications, please visit our [website](https://www.genetex.com).

## DATA IMAGES



### GTX66889-pro Image

3  $\mu$ g of GTX66889-pro SodA protein (active) by SDS-PAGE under reducing condition and visualized by coomassie blue stain



For full product information, images and publications, please visit our [website](#).