

## Malate dehydrogenase protein, His tag (active)

**Cat. No. GTX66891-pro****Applications** Functional Assay**Species** E. coli**Package**

100 µg

## Applications

**Application Note**

Specific activity is > 1000 units/mg, and is defined as the amount of enzyme that cleaves 1.0 µmole of oxalacetate and beta-NADH to L-malate and beta-NAD per minute at pH 8.0 at 37°C.

## Properties

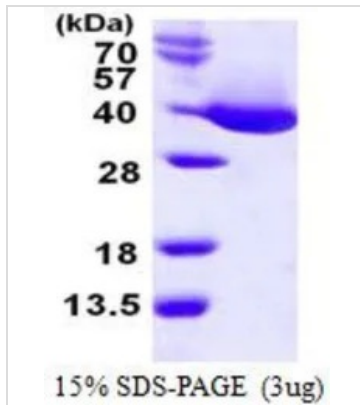
**Form** Liquid**Buffer** 20mM Tris-HCl, 50mM NaCl, 10% Glycerol, 1mM DTT**Preservative** No preservative**Storage** Store as concentrated solution. Centrifuge briefly prior to opening vial. For short-term storage (1-2 weeks), store at 4°C. For long-term storage, aliquot and store at -20°C or below. Avoid multiple freeze-thaw cycles.**Concentration** 1 mg/ml (Please refer to the vial label for the specific concentration.)**Region/Sequence**

Full length protein, N-terminal His-Tag; Length: 336 a.a. Sequence: MGSSHHHHHH SSSLVPRGSH MGSHMKVAVL GAAGGIGQAL ALLLKTQLPS GSELSLYDIA PVTPGVAVDL SHIPTAVKIK GFSGEDATPA LEGADVVLIS AGVARKPGMD RSDLFNVNAG IVKNLVQQA KTCPKACIGI ITNPVNTTVA IAAEVLKKG VYDKNKLFV TLDIIRSNT FVAELKKGQP GEVEVPVIGG HSGVTILPLL SQVPGVSFTE QEVADLTKRI QNAGTEVEA KAGGGSATLS MGQAAARFGL SLVRALQGEQ GVVECAAYVEG DGQYARFFSQ PLLLGKNGVE ERKSIGTLSA FEQNALEGML DTLKKDIALG EEFVVK

**Expression System** E. coli**Purity** > 95% by SDS-PAGE.**Conjugation** Unconjugated**Note** For In vitro laboratory use only. Not for any clinical, therapeutic, or diagnostic use in humans or animals. Not for animal or human consumption.

For full product information, images and publications, please visit our [website](#).

## DATA IMAGES

**GTX66891-pro Image**

3  $\mu$ g of GTX66891-pro Malate dehydrogenase protein (active) by SDS-PAGE under reducing condition and visualized by coomassie blue stain



For full product information, images and publications, please visit our [website](#).