

Glk protein, His tag (active)

Cat. No. GTX66893-pro

Applications Functional Assay**Species** E. coli**Package**

20 µg

Applications

Application Note

Specific activity is > 70 units/mg obtained by measuring the increase of NADPH in absorbance at 340 nm resulting from the reduction of NADP. One unit will oxidize 1.0 µmole of Glucose to D-glucose 6-phosphate per minute in the presence of Beta-NADP at pH 9.0 at 37°C.

Properties

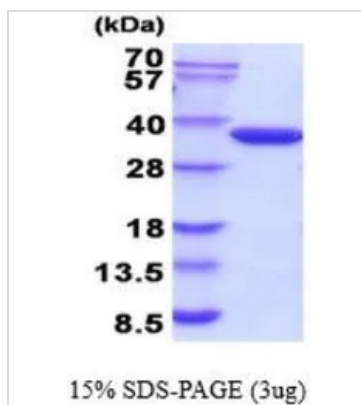
Form Liquid**Buffer** 20mM Tris-HCl, 150mM NaCl, 10% Glycerol**Preservative** No preservative**Storage** Store as concentrated solution. Centrifuge briefly prior to opening vial. For short-term storage (1-2 weeks), store at 4°C. For long-term storage, aliquot and store at -20°C or below. Avoid multiple freeze-thaw cycles.**Concentration** 1 mg/ml (Please refer to the vial label for the specific concentration.)**Region/Sequence**

Full length protein, N-terminal His-Tag; Length: 344 a.a. Sequence: MGSSHHHHHH SSGLVPRGSH MGSMTKYALV
GDVGGTNARL ALCDIASGEI SQAKTYSGLD YPSLEAVIRV YLEEHKVEVK DGCIAIACPI TGDWVAMTNH TWAFSIAEMK
KNLGFSLHLEI INDFTAVSMA IPMLKKEHLI QFGGAEPVEG KPIAVYGAGT GLGVAHLVHV DKRWVSLPGE GGHVDFAPNS
EEEAIILEIL RAEIGHVSAE RVLSPGGLVN LYRAIVKADN RLPENLKPDK ITERALADSC TDCRRALSIF CVIMGRFGGN LALNLGTFGG
VFIAGGIVPR FLEFFKASGF RAAFEDKGRF KEYVHDIPVY LIVHDNPGLL GSGAHLRQTL GHIL

Expression System E. coli**Purity** > 95% by SDS-PAGE.**Conjugation** Unconjugated**Note** For In vitro laboratory use only. Not for any clinical, therapeutic, or diagnostic use in humans or animals. Not for animal or human consumption.

For full product information, images and publications, please visit our [website](#).

DATA IMAGES



GTX66893-pro Image

3 μ g of GTX66893-pro Glk protein (active) by SDS-PAGE under reducing condition and visualized by coomassie blue stain



For full product information, images and publications, please visit our [website](#).