

Human Papillomavirus type 16 L1 antibody [CamVir 1]

Cat. No. GTX73652

| | |
|---------------------|-----------------------|
| Host | Mouse |
| Clonality | Monoclonal |
| Isotype | IgG2a |
| Applications | WB, ICC/IF, IHC-P, IP |
| Reactivity | Human papillomavirus |

References (2)
 Package
 1 ml

Applications

Application Note

*Optimal dilutions/concentrations should be determined by the researcher.

| Suggested dilution | Recommended dilution |
|--------------------|----------------------|
| WB | Assay dependent |
| ICC/IF | Assay dependent |
| IHC-P | 1:25-1:50 |
| IP | Assay dependent |

Note : Recommendations for antigen retrieval : EDTA buffer pH 8.0

Not tested in other applications.

Properties

| | |
|---------------------|---|
| Form | Liquid |
| Buffer | Ascites |
| Preservative | 0.09% Sodium azide |
| Storage | Store as concentrated solution. Centrifuge briefly prior to opening vial. Store at 4°C. |
| Immunogen | BALB/C mice were immunized with recombinant HPV-16 L1 protein. |
| Purification | Unpurified |
| Conjugation | Unconjugated |

Note

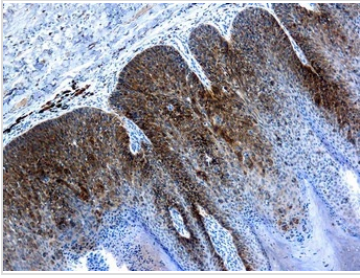
For laboratory research use only. Not for any clinical, therapeutic, or diagnostic use in humans or animals. Not for animal or human consumption.

Purchasers shall not, and agree not to enable third parties to, analyze, copy, reverse engineer or otherwise attempt to determine the structure or sequence of the product.



For full product information, images and publications, please visit our [website](#).

DATA IMAGES

**GTX73652 IHC-P Image**

IHC-P analysis of human HPV type 16 infected cervix tissue using GTX73652 Human Papillomavirus type 16 L1 antibody [CamVir 1].



For full product information, images and publications, please visit our [website](#).