

IL1 beta antibody

Cat. No. GTX74034

Host	Rabbit
Clonality	Polyclonal
Isotype	IgG
Applications	WB, ICC/IF, IHC-P, IHC-Fr, ELISA, IHC
Reactivity	Human, Mouse, Rat

References (105)

★★★★★ Review (1)

Package
100 µl

PRODUCT

Summary

Interleukin-1 beta (IL-1 beta) antibody detects IL-1 beta protein, which is a proinflammatory cytokine produced by active macrophages. In recent reports, IL-1 beta activation via caspase-1 can be induced by infectious pathogens in a process known as "pyroptosis", a form of programmed cell death that initiates an inflammatory antimicrobial response. IL-1 beta is also a key factor in cytokine storms associated with both infectious and non-infectious diseases.

Applications

Application Note

*Optimal dilutions/concentrations should be determined by the researcher.

Suggested dilution	Recommended dilution
WB	1:500-1:3000
ICC/IF	1:100-1:1000
IHC-P	1:100-1:1000
IHC-Fr	1:100-1:1000
ELISA	0.5-2µg/ml
IHC	Assay dependent

Not tested in other applications.

Calculated MW 31 kDa. ([Note](#))

Properties

Form	Liquid
Buffer	PBS
Preservative	No preservative
Storage	Store as concentrated solution. Centrifuge briefly prior to opening vial. For short-term storage (1-2 weeks), store at 4°C. For long-term storage, aliquot and store at -20°C or below. Avoid multiple freeze-thaw cycles.
Concentration	1 mg/ml (Please refer to the vial label for the specific concentration.)
Immunogen	Recombinant murine IL1 beta



For full product information, images and publications, please visit our [website](#).

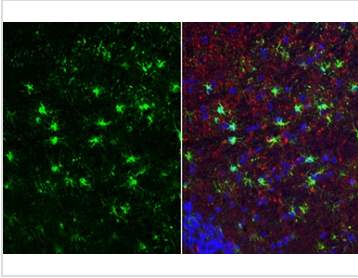
Purification Purified by antigen-affinity chromatography.

Conjugation Unconjugated

For laboratory research use only. Not for any clinical, therapeutic, or diagnostic use in humans or animals. Not for animal or human consumption.

Note Purchasers shall not, and agree not to enable third parties to, analyze, copy, reverse engineer or otherwise attempt to determine the structure or sequence of the product.

DATA IMAGES



GTX74034 IHC-P Image

IL1 beta antibody detects IL1 beta protein at microglia by immunohistochemical analysis.

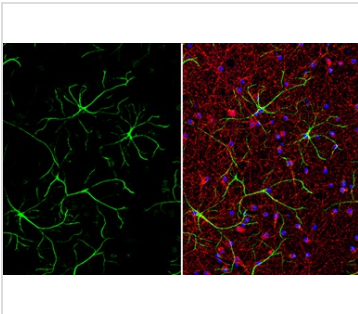
Sample: Paraffin-embedded rat cerebellum.

Green: IL1 beta stained by IL1 beta antibody (GTX74034) diluted at 1:250.

Red: NF-H, a neuron marker, stained by NF-H antibody [GT114] (GTX634289) diluted at 1:500.

Blue: Fluoroshield with DAPI (GTX30920).

Antigen Retrieval: Citrate buffer, pH 6.0, 15 min



GTX74034 ICC/IF Image

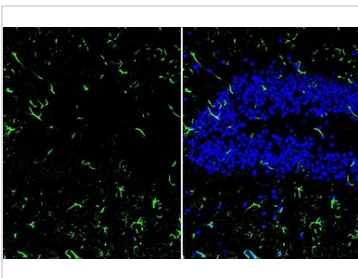
IL1 beta antibody detects IL1 beta protein by immunofluorescent analysis.

Sample: DIV9 rat E18 primary cortical neuron and glia cells were fixed in 4% paraformaldehyde at RT for 15 min.

Green: IL1 beta stained by IL1 beta antibody (GTX74034) diluted at 1:500.

Red: beta Tubulin 3/ Tuj1, stained by beta Tubulin 3/ Tuj1 antibody [GT11710] (GTX631836) diluted at 1:500.

Blue: Fluoroshield with DAPI (GTX30920).



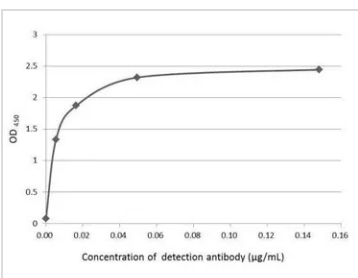
GTX74034 IHC-Fr Image

IL1 beta antibody detects IL1 beta protein at microglia by immunohistochemical analysis.

Sample: Frozen-sectioned mouse hippocampus.

Green: IL1 beta stained by IL1 beta antibody (GTX74034) diluted at 1:250.

Blue: Fluoroshield with DAPI (GTX30920).



GTX74034 ELISA Image

An ELISA plate is coated with 50 µL of IL1 beta recombinant protein at concentration of 5 µg/mL. The coated protein is detected with anti-IL1 beta antibody (GTX74034) at concentration ranged from 0.01 to 0.15 µg/mL.



For full product information, images and publications, please visit our [website](#).