

Integrin alpha 6 antibody [450-30A]

Cat. No. GTX75046

Host	Mouse
Clonality	Monoclonal
Isotype	IgG1
Applications	WB, IHC-Fr, FACS
Reactivity	Human

References (1)

Package

100 µg

Applications

Application Note

*Optimal dilutions/concentrations should be determined by the researcher.

Suggested dilution	Recommended dilution
WB	Assay dependent
IHC-Fr	1/50-1/100
FACS	1/10-1/50

Note : The epitope recognised by this antibody is reported to be sensitive to formaldehyde fixation and tissue processing. Recommend the use of acetone fixation for frozen sections.

Use 10µl of the suggested working dilution to label 10⁶ cells in 100µl.

Not tested in other applications.

Calculated MW 127 kDa. ([Note](#))

Properties

Form	Liquid
Buffer	PBS
Preservative	0.09% Sodium azide
Storage	Store as concentrated solution. Centrifuge briefly prior to opening vial. For short-term storage (1-2 weeks), store at 4°C. For long-term storage, aliquot and store at -20°C or below. Avoid multiple freeze-thaw cycles.
Concentration	1.0 mg/ml (Please refer to the vial label for the specific concentration.)
Immunogen	integrin a6b4 purified from A431 cells
Purification	Protein G purified From tissue culture supernatant
Conjugation	Unconjugated



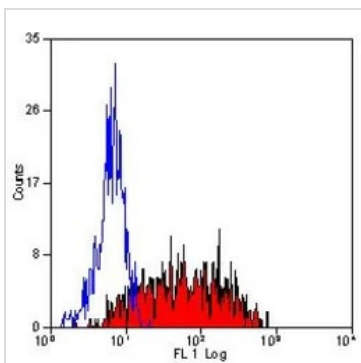
For full product information, images and publications, please visit our [website](#).

For laboratory research use only. Not for any clinical, therapeutic, or diagnostic use in humans or animals. Not for animal or human consumption.

Note

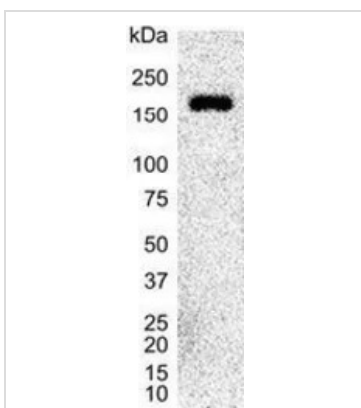
Purchasers shall not, and agree not to enable third parties to, analyze, copy, reverse engineer or otherwise attempt to determine the structure or sequence of the product.

DATA IMAGES



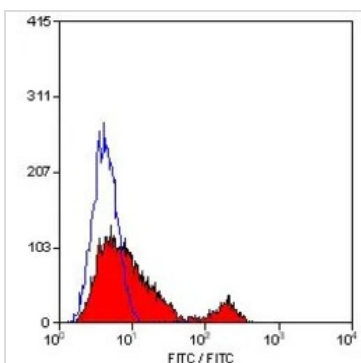
GTX75046 FACS Image

FACS analysis of human peripheral blood monocytes using GTX75046 Integrin alpha 6 antibody [450-30A].



GTX75046 WB Image

WB analysis of Jurkat cell lysate using GTX75046 Integrin alpha 6 antibody [450-30A].



GTX75046 FACS Image

FACS analysis of human peripheral blood lymphocytes using GTX75046 Integrin alpha 6 antibody [450-30A].



For full product information, images and publications, please visit our [website](#).