

## CDCP1 (isoform 1: C term) antibody, C-term

**Cat. No. GTX82973**

<b>Host</b>	Goat
<b>Clonality</b>	Polyclonal
<b>Isotype</b>	IgG
<b>Applications</b>	WB, IHC-P
<b>Reactivity</b>	Human

**Package**  
100 µg

## Applications

**Application Note**

\*Optimal dilutions/concentrations should be determined by the researcher.

Suggested dilution	Recommended dilution
WB	1-3µg/ml
IHC-P	5µg/ml

Not tested in other applications.

**Calculated MW** 93 kDa. ([Note](#))

**Product Note** This antibody is expected to recognize isoform 1 (NP\_073753.3) only.

## Properties

<b>Form</b>	Liquid
<b>Buffer</b>	TBS, 0.5% BSA
<b>Preservative</b>	0.02% Sodium azide
<b>Storage</b>	Store as concentrated solution. Centrifuge briefly prior to opening vial. For short-term storage (1-2 weeks), store at 4°C. For long-term storage, aliquot and store at -20°C or below. Avoid multiple freeze-thaw cycles.
<b>Concentration</b>	0.50 mg/ml (Please refer to the vial label for the specific concentration.)
<b>Immunogen</b>	Peptide with sequence C-PLLNTQEPMEPAE, from the C Terminus of the protein sequence according to NP_073753.3.
<b>Purification</b>	Purified by ammonium sulphate precipitation followed by antigen affinity chromatography
<b>Conjugation</b>	Unconjugated

**Note**

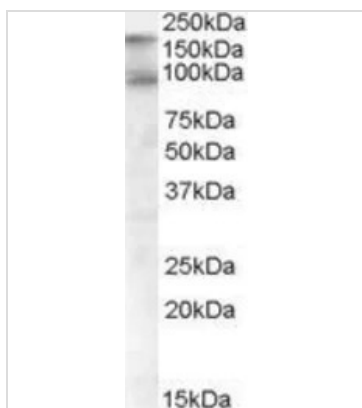
For laboratory research use only. Not for any clinical, therapeutic, or diagnostic use in humans or animals. Not for animal or human consumption.

Purchasers shall not, and agree not to enable third parties to, analyze, copy, reverse engineer or otherwise attempt to determine the structure or sequence of the product.



For full product information, images and publications, please visit our [website](#).

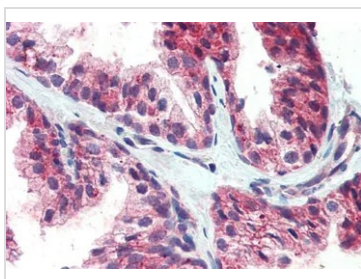
## DATA IMAGES

**GTX82973 WB Image**

WB analysis of human colon lysate using GTX82973 CDCP1 (isoform 1: C term) antibody, C-term.

Dilution : 1µg/ml

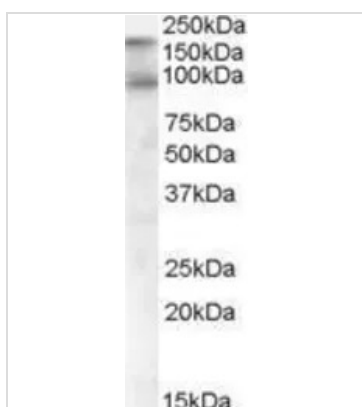
Loading : 35µg protein in RIPA buffer

**GTX82973 IHC-P Image**

IHC-P analysis of human prostate using GTX82973 CDCP1 (isoform 1: C term) antibody, C-term.

Antigen retrieval : citrate buffer pH 6

Dilution : 5µg/ml

**GTX82973 Image**

For full product information, images and publications, please visit our [website](#).