

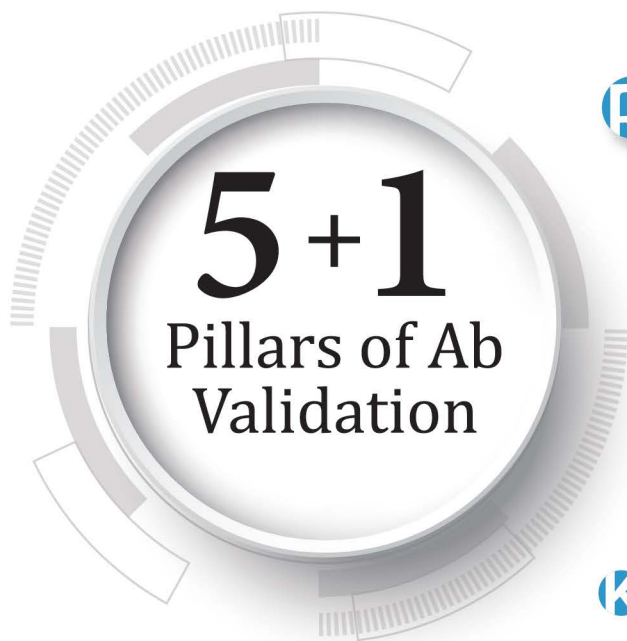
Antibodies for Virology Research

- Your Expertise
- Our Antibodies
- Accelerated Discovery

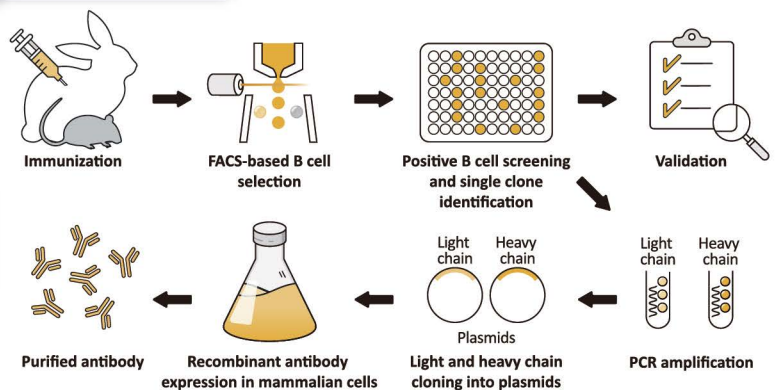
www.genetex.com

GeneTex is a multinational antibody manufacturing company dedicated to creating reagents for biomedical research, assay development, and *in vitro* diagnostics. The company operates state-of-the-art facilities to provide products generated through refined development and quality assurance programs, international collaboration with leading researchers, and scrupulous scientific rigor. GeneTex's antibodies and reagents are manufactured to standards outlined in Quality Management Systems (QMS) ISO 9001:2015 and ISO 13485:2016 and are supported by comprehensive validation and customer service.

To enhance its already extensive catalog of conventional polyclonal and monoclonal antibodies, GeneTex is now focusing its production on the creation of highly validated recombinant rabbit monoclonal antibodies with consistent specificity and performance. Though novel recombinant antibodies will be developed for nearly all fields of research, molecular virology will be a major emphasis of new production. This brochure serves to introduce virologists to just some of the established and new antibodies presently in the GeneTex molecular virology catalog, with plans to continue expanding this product line to further support virology research.



Recombinant Rabbit Antibody Production Workflow

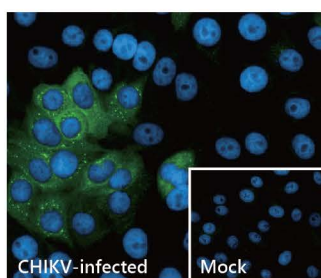



- KO/KD Validation
- Comparable Abs
- IP/MS Analysis
- Orthogonal Validation
- Protein Overexpression

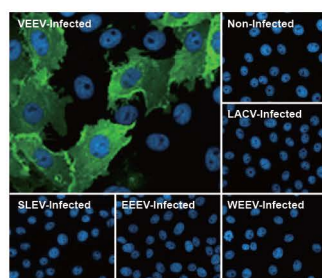
Recombinant Comparable Abs Orthogonal Validation





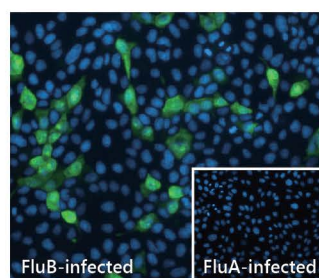
New Recombinant Antibodies for Virology Research





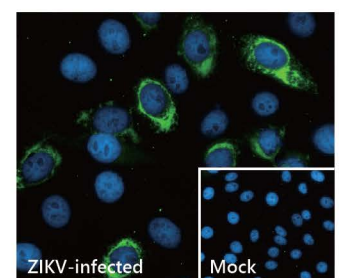
Chikungunya Virus nsP2 antibody [HL1488] (GTX636962) 




Venezuelan Equine Encephalitis Virus nsP1 antibody [HL1472] (GTX636946)  

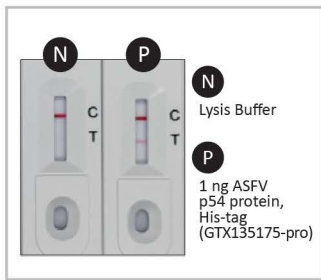


Influenza B Virus Nucleoprotein antibody [HL1068] (GTX636099)  

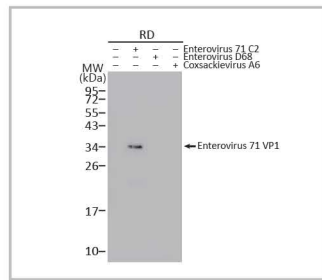


Zika Virus Envelope protein antibody [HL1699] (GTX637298) 

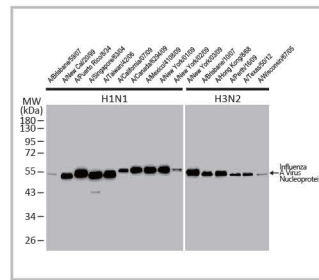
Recombinant Antibodies for Virology Research



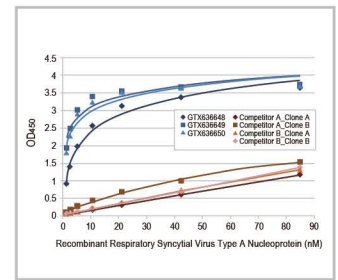
ASFV p54 antibody [HL1289] (GTX636703)



Enterovirus 71 VP1 antibody [HL1929] (GTX636788)



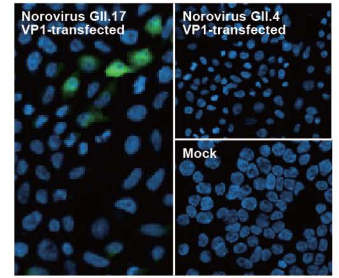
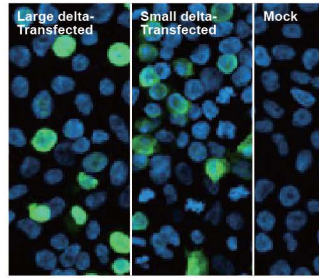
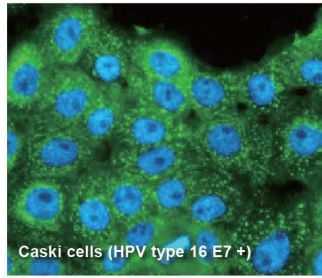
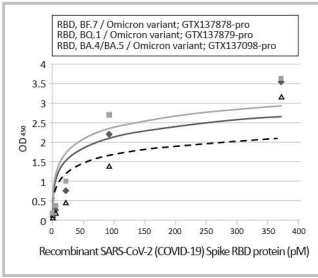
Influenza A Virus Nucleoprotein antibody [HL1103] (GTX636318)



Respiratory Syncytial Virus Nucleoprotein antibody [HL1246] (GTX636648)

Recombinant Comparable Abs Orthogonal Validation

Cat. No.	Product Name	Clonality	Applications
GTX636703	ASFV p54 antibody [HL1289]	Rec Rb mAb	WB, ICC/IF, ELISA, Lateral Flow, Sandwich ELISA
GTX637025	Avian Influenza A virus H5N8 HA (Hemagglutinin) antibody [HL1550]	Rec Rb mAb	WB, IHC-P (cell pellet)
GTX636962	Chikungunya virus nsP2 antibody [HL1488]	Rec Rb mAb	WB, ICC/IF, IHC-P (cell pellet)
GTX637973	Chikungunya virus E1 antibody [HL2069]	Rec Rb mAb	WB
GTX637892	Dengue virus type 2, 3 NS1 protein antibody [HL1991]	Rec Rb mAb	WB, ICC/IF
GTX637688	Enterovirus 71 VP1 antibody [HL1929]	Rec Rb mAb	WB, ELISA, Sandwich ELISA
GTX637898	Enterovirus D68 VP1 antibody [HL1997]	Rec Rb mAb	WB, ELISA, Sandwich ELISA
GTX636026	Hepatitis D virus Large delta protein antibody [HL1051]	Rec Rb mAb	WB, ICC/IF
GTX636030	Hepatitis D virus Large delta + Small delta protein antibody [HL1055]	Rec Rb mAb	WB, ICC/IF
GTX637228	Human Papillomavirus type 16 E7 antibody [HL1647]	Rec Rb mAb	WB, ICC/IF, ELISA, Lateral Flow, Sandwich ELISA
GTX637034	Influenza A virus H10N3 HA (Hemagglutinin) antibody [HL1559]	Rec Rb mAb	ICC/IF, IHC-P (cell pellet)
GTX636323	Influenza A virus H1N1 NA (Neuraminidase) antibody [HL1108]	Rec Rb mAb	WB, ICC/IF
GTX636677	Influenza A virus M1 (matrix protein) antibody [HL1275]	Rec Rb mAb	WB, ICC/IF, IHC-P (cell pellet)
GTX637581	Influenza A virus M2 (matrix protein) antibody [HL1856]	Rec Rb mAb	WB, ICC/IF
GTX638102	Influenza A virus NS1 (nonstructural protein) antibody [HL2130]	Rec Rb mAb	WB, ICC/IF
GTX636318	Influenza A virus Nucleoprotein antibody [HL1103]	Rec Rb mAb	WB, ICC/IF, ELISA, Lateral Flow, Sandwich ELISA, IHC-P (cell pellet)
GTX636828	Influenza A virus PA protein antibody [HL1388]	Rec Rb mAb	WB, ICC/IF
GTX637313	Influenza A virus PB1 protein antibody [HL1714]	Rec Rb mAb	WB, ICC/IF
GTX637893	Influenza A virus PB2 protein antibody [HL1992]	Rec Rb mAb	WB, ICC/IF
GTX636099	Influenza B virus Nucleoprotein antibody [HL1068]	Rec Rb mAb	WB, ICC/IF, ELISA, Lateral Flow, Sandwich ELISA
GTX636950	Influenza B virus Neuraminidase (NA) antibody [HL1476]	Rec Rb mAb	WB, ICC/IF, IHC-P (cell pellet)
GTX638212	Influenza B virus Hemagglutinin (HA) antibody [HL2208]	Rec Rb mAb	WB
GTX636832	Lassa virus Nucleoprotein antibody [HL1392]	Rec Rb mAb	WB, ICC/IF
GTX636902	Nipah virus Nucleoprotein antibody [HL1436]	Rec Rb mAb	WB, ICC/IF
GTX637271	Norovirus VP1 antibody [HL1672] (GII.4)	Rec Rb mAb	WB
GTX638181	Norovirus VP1 antibody [HL2177] (GII.17)	Rec Rb mAb	WB
GTX637650	PRRS virus Nucleocapsid protein antibody [HL1901] (TSYN-P1 and MD006-P1)	Rec Rb mAb	WB, ICC/IF
GTX637947	PRRS virus Nucleocapsid protein antibody [HL2046] (TSYN-P1)	Rec Rb mAb	WB, ICC/IF
GTX636648	Respiratory Syncytial virus Nucleoprotein antibody [HL1246]	Rec Rb mAb	WB, ICC/IF, IP, ELISA, Lateral Flow, Sandwich ELISA
GTX636650	Respiratory Syncytial virus Nucleoprotein antibody [HL1248]	Rec Rb mAb	WB, ICC/IF, IP, ELISA, Lateral Flow, Sandwich ELISA
GTX636711	Respiratory Syncytial virus type A Nucleoprotein antibody [HL1297]	Rec Rb mAb	WB, ICC/IF, IP, ELISA, Sandwich ELISA
GTX637381	Respiratory Syncytial virus type B G protein antibody [HL1733]	Rec Rb mAb	WB, ICC/IF
GTX636762	Swine Influenza A virus G4 EA H1N1 HA (Hemagglutinin) antibody [HL1342]	Rec Rb mAb	WB, ICC/IF, IHC-P (cell pellet)
GTX636946	Venezuelan Equine Encephalitis Virus nsP1 antibody [HL1472]	Rec Rb mAb	WB, ICC/IF, IHC-P (cell pellet)
GTX637668	Venezuelan Equine Encephalitis Virus nsP2 antibody [HL1919]	Rec Rb mAb	WB, ICC/IF
GTX636976	Venezuelan Equine Encephalitis Virus nsP3 antibody [HL1502]	Rec Rb mAb	WB, ICC/IF, IHC-P (cell pellet)
GTX637389	Venezuelan Equine Encephalitis Virus nsP4 antibody [HL1741]	Rec Rb mAb	WB, ICC/IF
GTX637298	Zika virus Envelope protein antibody [HL1699]	Rec Rb mAb	WB, ICC/IF
GTX638129	Zika virus NS2B protein antibody [HL2151]	Rec Rb mAb	WB
GTX637262	Zika virus NS4B protein antibody [HL1664]	Rec Rb mAb	WB, ICC/IF, IHC-P (cell pellet)
GTX638132	Zika virus NS5 protein antibody [HL2154]	Rec Rb mAb	WB, ICC/IF



Capture: SARS-CoV-2 (COVID-19) Spike RBD antibody [HL1014] (GTX635807) [🔗](#)
Detection: HRP-conjugated SARS-CoV-2 (COVID-19) Spike RBD Omicron antibody [HL1867] (GTX637592) [🔗](#)

Human Papillomavirus type 16 E7 antibody [HL1647] (GTX637228) [🔗](#)

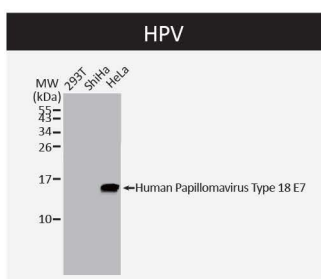
Hepatitis D virus Large delta + Small delta protein antibody [HL1055] (GTX636030) [🔗](#)

Norovirus VP1 antibody [HL2177] (GTX638181) [🔗](#)

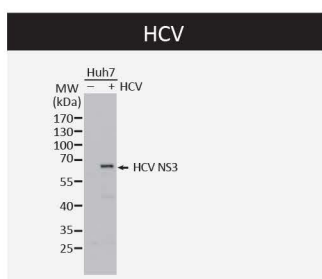


Highlighted Antibodies for Infectious Diseases

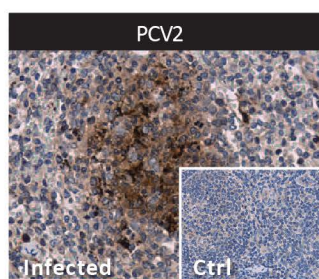
	Cat. No.	Product Name	Clonality	Applications
Avian Influenza A Virus	GTX632358	Avian Influenza A Virus H5N1 HA (Hemagglutinin) antibody [1D10]	Ms mAb	WB, ICC/IF
	GTX127303	Avian Influenza A Virus H7N7 HA (Hemagglutinin) antibody	Rb pAb	WB
Chikungunya Virus	GTX135183	Chikungunya Virus Capsid antibody	Rb pAb	WB, ICC/IF
	GTX135191	Chikungunya Virus nsP1 antibody	Rb pAb	WB, ICC/IF
	GTX135189	Chikungunya Virus nsP3 antibody	Rb pAb	WB, ICC/IF, IHC-P (cell pellet)
	GTX135190	Chikungunya Virus nsP4 antibody	Rb pAb	WB, ICC/IF
Coxsackievirus	GTX132346	Coxsackievirus A6 VP1 antibody	Rb pAb	WB, ICC/IF
	GTX132348	Coxsackievirus A6 VP2 antibody	Rb pAb	WB
Ebola Virus	GTX134144	Ebola Virus GP1 antibody	Rb pAb	WB, ICC/IF
	GTX134031	Ebola Virus NP antibody	Rb pAb	WB, ICC/IF
	GTX134032	Ebola Virus VP35 antibody	Rb pAb	WB, ICC/IF
	GTX134034	Ebola Virus VP40 antibody	Rb pAb	WB, ICC/IF
Enterovirus	GTX124261	Enterovirus 71 antibody	Rb pAb	WB, ICC/IF, IHC-P, ELISA
	GTX132343	Enterovirus 71 2B antibody	Rb pAb	WB, IHC-P
	GTX132354	Enterovirus 71 2C antibody	Rb pAb	WB
	GTX132344	Enterovirus 71 3AB antibody	Rb pAb	WB, IHC-P
	GTX630191	Enterovirus 71 3C antibody [B3]	Ms mAb	WB, FACS
	GTX630193	Enterovirus 71 3D antibody [4]	Ms mAb	WB, ICC/IF, IP
	GTX132340	Enterovirus 71 VP2 antibody	Rb pAb	WB, ICC/IF, IHC-P
	GTX132341	Enterovirus 71 VP3 antibody	Rb pAb	WB, ICC/IF
	GTX132314	Enterovirus D68 VP2 antibody	Rb pAb	WB, ICC/IF, IHC-Fr
GTX132315	Enterovirus D68 VP3 antibody	Rb pAb	WB, IHC-P	
Hepatitis B Virus	GTX108380	Hepatitis B Virus 2a small S Protein antibody	Rb pAb	WB
Hepatitis C Virus	GTX103353	Hepatitis C Virus E2 protein antibody	Rb pAb	WB, ICC/IF, Blocking, EM
	GTX131832	Hepatitis C Virus NS2 protein antibody	Rb pAb	WB
	GTX131269	Hepatitis C Virus NS3 protein antibody	Rb pAb	WB, IHC-P
Human Papillomavirus	GTX132686	Human Papillomavirus Type 16 E6 antibody	Rb pAb	WB
	GTX132687	Human Papillomavirus Type 18 E6 antibody	Rb pAb	WB
	GTX133412	Human Papillomavirus Type 18 E7 antibody	Rb pAb	WB, ICC/IF
Porcine Circovirus Type 2	GTX634210	Porcine Circovirus Type 2 / PCV2 Capsid antibody [GT863]	Ms mAb	WB, IHC-P
	GTX128121	Porcine Circovirus Type 2 / PCV2 Capsid antibody	Rb pAb	WB, IHC-P
	GTX133638	Porcine Circovirus Type 2 / PCV2 Replicase antibody	Rb pAb	WB, ICC/IF, IHC
Powassan Virus	GTX132055	Powassan Virus prM protein antibody	Rb pAb	WB
PRRS Virus	GTX129062	PRRS Virus GP5 protein antibody	Rb pAb	WB, ICC/IF
	GTX129063	PRRS Virus M protein antibody	Rb pAb	WB, ICC/IF, IHC-P
	GTX129270	PRRS Virus Nucleocapsid protein antibody	Rb pAb	WB, ICC/IF



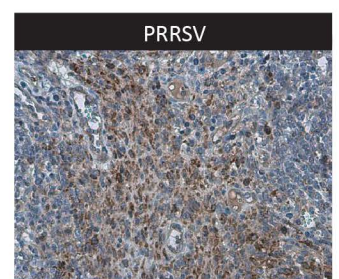
Human Papillomavirus Type 18 E7 antibody (GTX133412) [🔗](#)



Hepatitis C Virus NS3 protein antibody (GTX131269) [🔗](#)

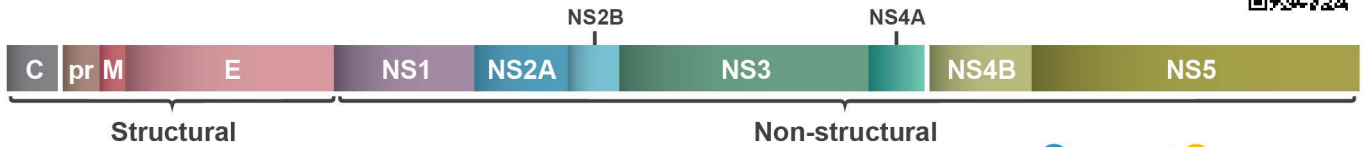


Porcine Circovirus Type 2 / PCV2 Capsid antibody (GTX128121) [🔗](#)



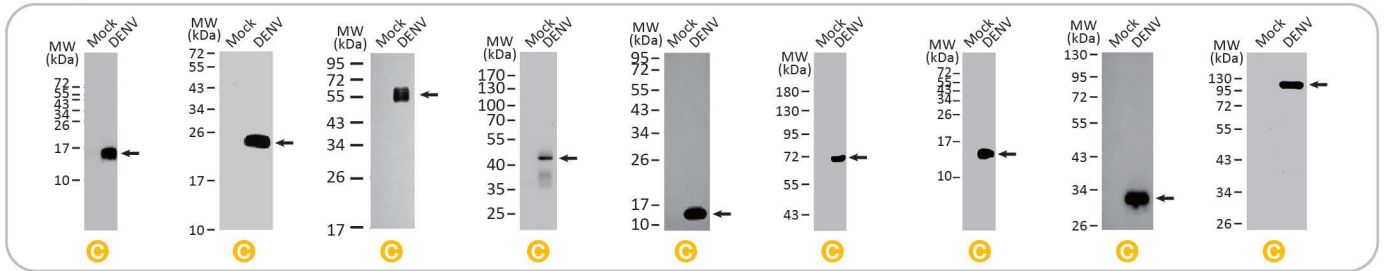
PRRS Virus M protein antibody (GTX129063) [🔗](#)

Antibodies for Flavivirus Research



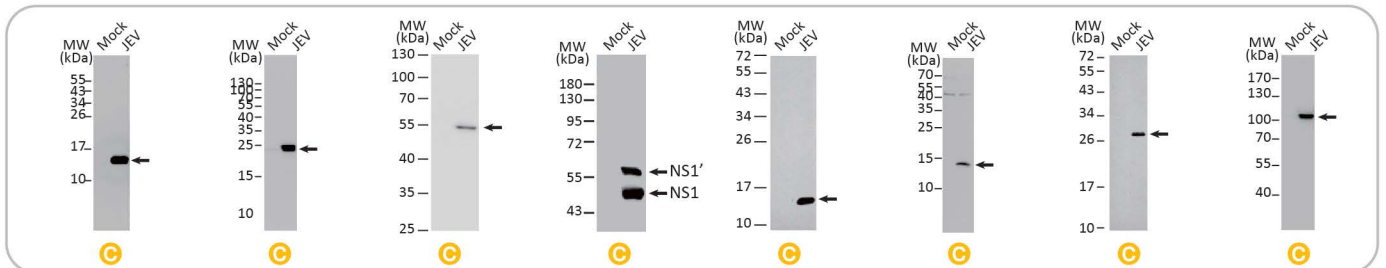
Dengue Virus (DENV)

R Recombinant C Citation Support



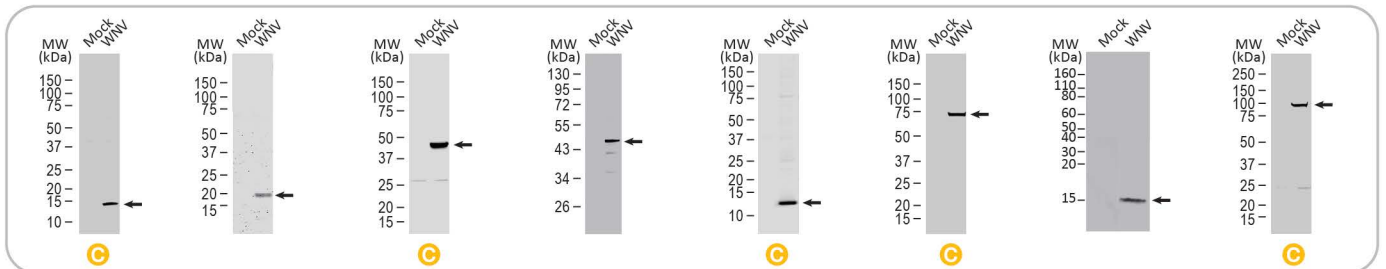
DENV Capsid (GTX103343) **DENV prM** (GTX128093) **DENV Envelope** (GTX127277) **DENV NS1** (GTX124280) **DENV NS2B** (GTX124246) **DENV NS3** (GTX124252) **DENV NS4A** (GTX132069) **DENV NS4B** (GTX124250) **DENV NS5** (GTX103350)

Japanese Encephalitis Virus (JEV)



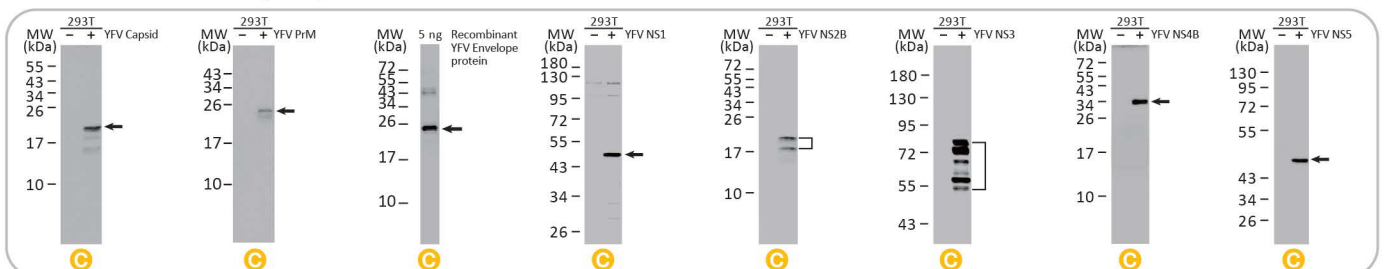
JEV Core protein C (GTX634153) **JEV PrM** (GTX131833) **JEV Envelope** (GTX125867) **JEV NS1** (GTX633820) **JEV NS2B** (GTX125972) **JEV NS4A** (GTX132028) **JEV NS4B** (GTX125865) **JEV NS5** (GTX131359)

West Nile Virus (WNV)



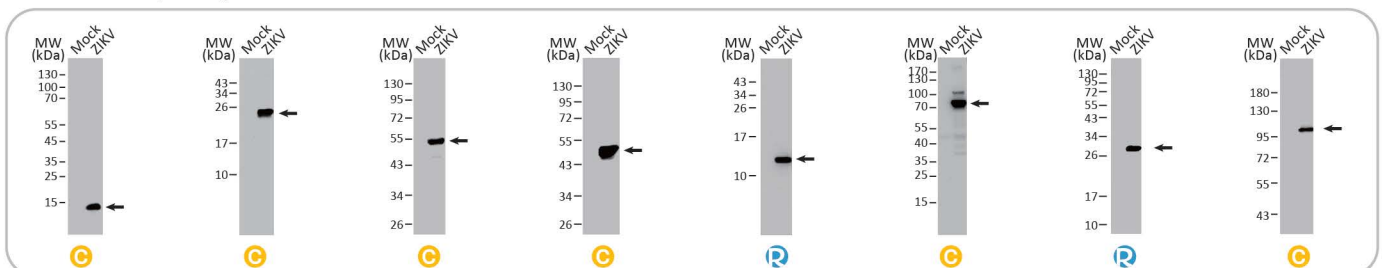
WNV Capsid (GTX131947) **WNV PrM** (GTX131948) **WNV Envelope** (GTX132052) **WNV NS1** (GTX132053) **WNV NS2B** (GTX132060) **WNV NS3** (GTX131955) **WNV NS4A** (GTX131957) **WNV NS5** (GTX131961)

Yellow Fever Virus (YFV)



YFV Capsid (GTX134022) **YFV PrM** (GTX133957) **YFV Envelope** (GTX134024) **YFV NS1** (GTX134026) **YFV NS2B** (GTX134028) **YFV NS3** (GTX133958) **YFV NS4B** (GTX134030) **YFV NS5** (GTX134141)

Zika Virus (ZIKV)



ZIKV Capsid (GTX133317) **ZIKV PrM** (GTX133305) **ZIKV Envelope** (GTX133314) **ZIKV NS1** (GTX133307) **ZIKV NS2B** (GTX638129) **ZIKV NS3** (GTX133309) **ZIKV NS4B** (GTX637262) **ZIKV NS5** (GTX133312)