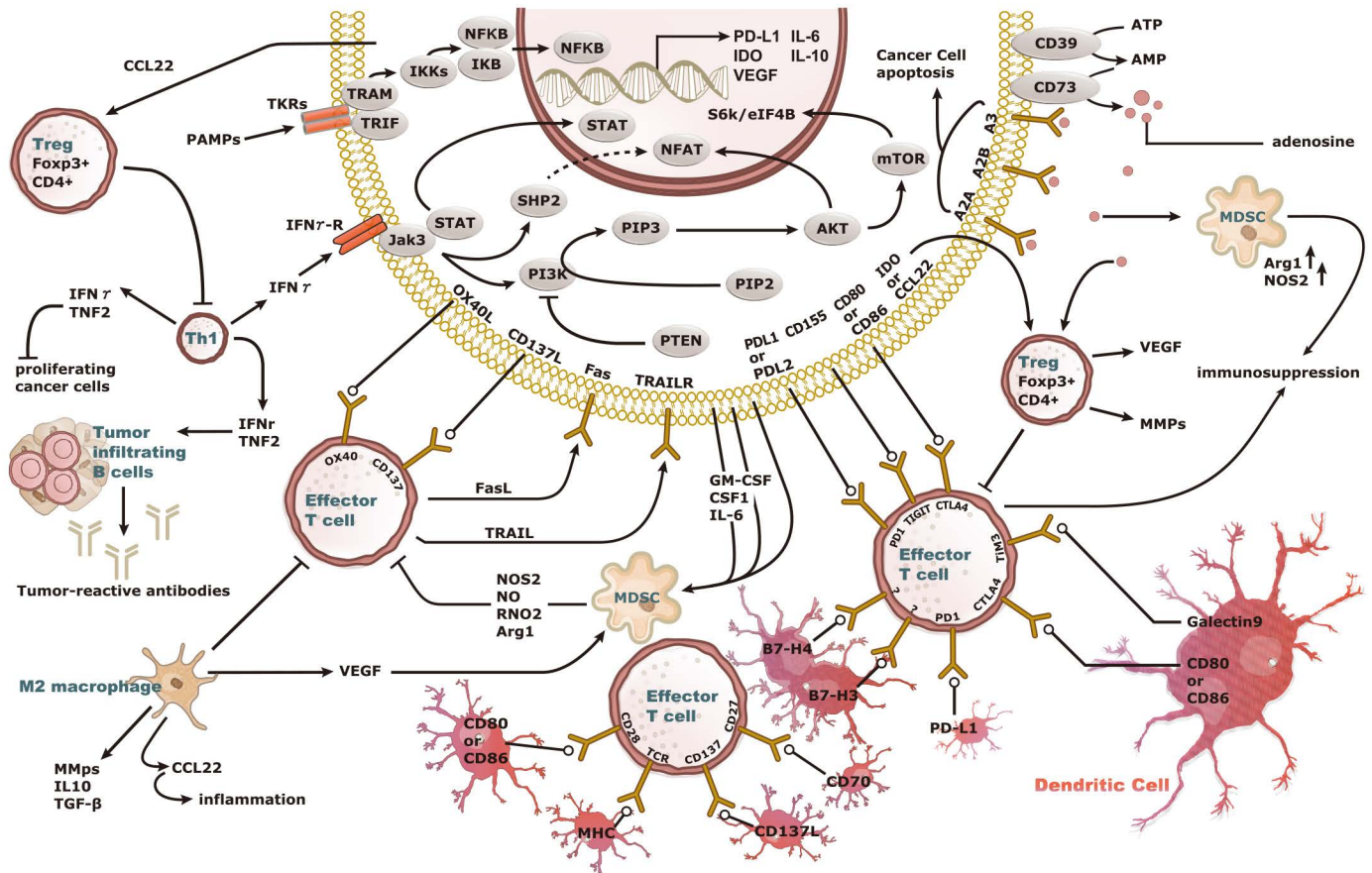
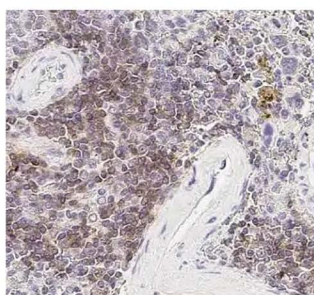



- Your Expertise
- Our Antibodies
- Accelerated Discovery

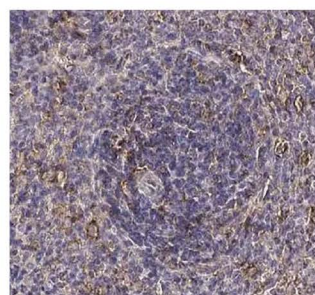
Cancer Immune Checkpoints




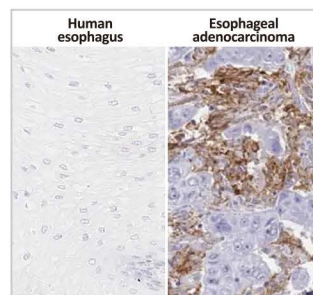
Increasing knowledge of how cancer cells escape immune destruction has significantly driven the evolution of cancer immunotherapy. In particular, studies describing how different immune checkpoints, including the PD-1 and CTLA-4 pathways, function to attenuate T cell antitumor activity have revealed novel opportunities for therapeutic intervention. Researchers have made promising strides in inhibiting these checkpoints to unleash the T cells' tumor-killing potential. Given that both radiotherapy and chemotherapy can also mobilize antitumor T cells, there is great excitement that checkpoint inhibition and other immunomodulatory approaches can be combined with conventional modalities to maximize clinical outcomes for a number of malignancies.




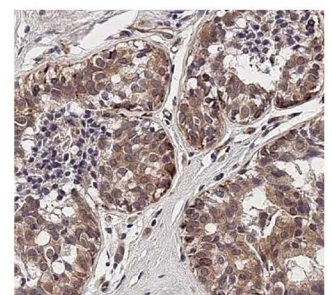
CD28 antibody [HL1589]
(GTX637068) 




CTLA4 antibody [HL2732]
(GTX639560) 



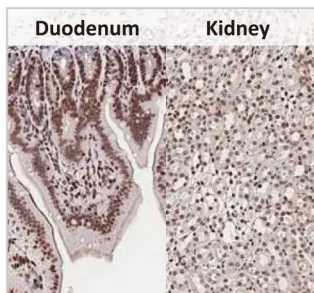
PD-L1 antibody [HL1041]
(GTX635975) 



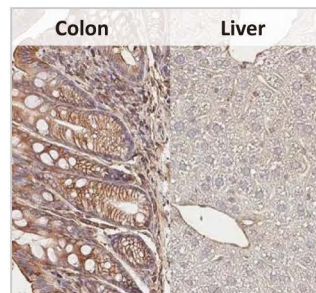
TIGIT antibody [HL2657]
(GTX639116) 

Inhibitory molecules

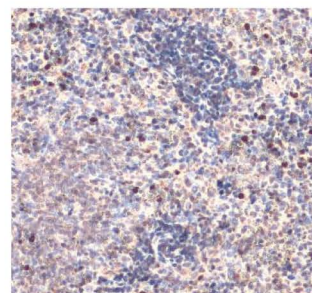
	Cat. No.	Product Name	Clonality	Reactivity	Applications
CD80	GTX75761	CD80 antibody [MEM-233]	Ms mAb	Hu,Mk	WB, FACS, IP
	GTX84698	CD80 antibody [1E9]	Ms mAb	Hu,Rat,Dog,Mk	WB, ICC/IF, FACS
	GTX84701	CD80 antibody [2B11]	Ms mAb	Hu	WB, ICC/IF, IHC-P
CD86	GTX74650	CD86 antibody [BU63]	Ms mAb	Hu	WB, ICC/IF, IHC-Fr, FACS, IP
	GTX32507	CD86 antibody	Rb pAb	Hu,Ms,Rat	WB, ICC/IF, IHC-P, IHC-Fr
	GTX02615	CD86 antibody [C86/2160R]	Rb mAb	Hu,Ms,Rat	WB, ICC/IF, IHC-P, FACS, ELISA
CD155	GTX129572	CD155 antibody	Rb pAb	Hu	WB
	GTX37437	CD155 antibody	Rb pAb	Hu,Ms,Rat	WB, IHC-P
CD160	GTX00488	CD160 antibody [BY55]	Ms mAb	Hu	FACS, IP
	GTX17209	CD160 antibody	Rb pAb	Hu,Ms	WB, ICC/IF, ELISA
CD200	GTX76140	CD200 antibody [OX-2]	Ms mAb	Rat	ICC/IF, IHC-Fr, FACS, IP, EM
	GTX51679	CD200 antibody	Rb pAb	Hu	IHC-P
	GTX130094	CD200 antibody	Rb pAb	Hu	WB
CD200R	GTX86998	CD200R antibody	Rb pAb	Hu	WB
	GTX42286	CD200R antibody [OX-110]	Rat mAb	Ms	FACS
CD226	GTX118131	CD226 antibody [N1C2]	Rb pAb	Hu	WB, IHC-P
CD272 (BTLA)	GTX112783	CD272 antibody	Rb pAb	Hu	WB, IHC-P
	GTX31892	CD272 antibody	Rb pAb	Hu	WB, IHC-P, ELISA
CEACAM1	GTX113392	CEACAM1 antibody [N1N3]	Rb pAb	Hu	WB, IHC-P
CTLA4	GTX75283	CTLA4 antibody [BNI3]	Ms mAb	Hu,Bb,CIMK,RMK	IHC-P,IHC-Fr,FACS,IP,Activation,EIA,Neutralizing/Inhibition
	GTX134527	CTLA4 antibody	Rb pAb	Hu,Ms	WB, IHC-P
	GTX639560	CTLA4 antibody [HL2732]	Rec Rb mAb	Hu,Ms,Rat	WB, IHC-P
FGL1	GTX638480	FGL1 antibody [HL2317]	Rec Rb mAb	Hu	WB, ICC/IF
Galectin 3	GTX637921	Galectin 3 antibody [HL2020]	Rec Rb mAb	Hu,Ms,Cat,Dog	WB, ICC/IF, IHC-P
	GTX635155	Galectin 3 antibody [GT12712]	Ms mAb	Hu	WB, ICC/IF, IHC-P, ELISA, Sandwich ELISA
	GTX113486	Galectin 3 antibody	Rb pAb	Hu,Rat,Dog	WB, ICC/IF, IHC-P, ELISA, Sandwich ELISA
Galectin 9	GTX127353	Galectin 9 antibody	Rb pAb	Hu	WB, IHC-P
GI24 (VISTA)	GTX104081	GI24 antibody	Rb pAb	Hu	WB
HMGB1	GTX637963	HMGB1 antibody [HL2059]	Rec Rb mAb	Hu,Ms,Rat,Cat,Dog	WB, ICC/IF, IHC-P, ELISA
	GTX628834	HMGB1 antibody [GT383]	Ms mAb	Hu,Ms,Rat	WB, ICC/IF, IHC-P, IHC-Fr
	GTX101277	HMGB1 antibody	Rb pAb	Hu,Ms,Rat,Zfsh,Pig	WB, ICC/IF, IHC-P, IHC-Wm, IHC, IHC (Free Floating)
	GTX127344	HMGB1 antibody	Rb pAb	Hu,Ms,Rat	WB, ICC/IF, IHC-P, IHC-Fr, IP, RIP
IGSF11 (VSIG3)	GTX46653	IGSF11 antibody, Internal	Rb pAb	Hu	WB
LAG3	GTX134573	LAG3 antibody	Rb pAb	Hu	WB
	GTX81605	LAG3 antibody, Internal	Rb pAb	Hu,Ms	WB, IHC-P, FACS
LIGHT	GTX37328	LIGHT antibody	Rb pAb	Ms,Rat	WB, IHC-P
	GTX88321	LIGHT antibody, Internal	Gt pAb	Hu	WB, ICC/IF
LSEctin (CLEC4G)	GTX45168	CLEC4G antibody, N-term	Rb pAb	Hu	WB
MHC II	GTX76190	MHC Class II RT1B antibody [OX-6]	Ms mAb	Ms,Rat	WB, ICC/IF, IHC-P, IHC-Fr, FACS
Nectin 2 (CD112)	GTX113535	Nectin 2 antibody [N1N3]	Rb pAb	Hu	WB, IHC-P
	GTX105742	Nectin 2 antibody	Rb pAb	Hu	WB, IHC-P
	GTX54844	Nectin 2 antibody	Rb pAb	Hu,Ms,Rat	WB, IHC-Fr, FACS



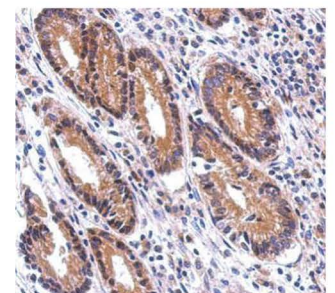
HMGB1 antibody [HL2059]
(GTX637963)



Galectin 3 antibody [HL2020]
(GTX637921)



CTLA4 antibody
(GTX134527)



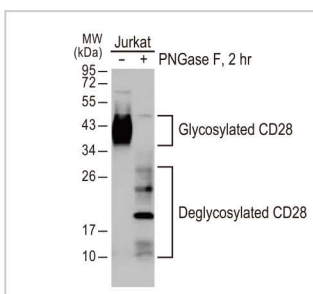
Nectin 2 antibody [N1N3]
(GTX113535)

Inhibitory molecules

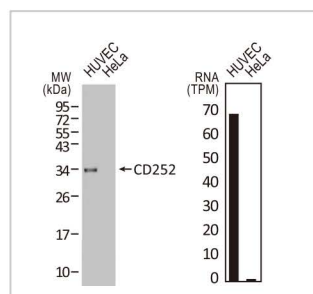
	Cat. No.	Product Name	Clonality	Reactivity	Applications
PD1	GTX50053	PD1 antibody [4F12]	Ms mAb	Hu	WB, ICC/IF, FACS, ELISA
	GTX128435	PD1 antibody	Rb pAb	Hu,Ms	WB, IHC-P
	GTX128436	PD1 antibody	Rb pAb	Hu	WB
PD-L1	GTX635975	PD-L1 antibody [HL1041]	Rec Rb mAb	Hu	WB, ICC/IF, IHC-P
	GTX636033	PD-L1 antibody [HL1056]	Rec Rb mAb	Hu	WB, ICC/IF
	GTX104763	PD-L1 antibody	Rb pAb	Hu	WB, ICC/IF, IHC-P, IHC-Fr, FACS
PD-L2	GTX85449	PD-L2 antibody	Rb pAb	Hu,Ms,Rat	WB, IHC-P, ELISA
TIM-3	GTX54117	TIM-3 antibody	Rb pAb	Hu,Ms	WB, IHC-P
	GTX49381	TIM-3 antibody	Rb pAb	Hu	WB, IHC-P, ELISA
	GTX04440	TIM-3 antibody [MSVA-366R] HistoMAX™	Rb mAb	Hu	IHC-P
TIGIT	GTX639114	TIGIT antibody [HL2655]	Rb mAb	Hu	WB
	GTX639116	TIGIT antibody [HL2657]	Rb mAb	Hu	WB, IHC-P
TNFRSF14 (HVEM)	GTX31297	TNFRSF14 antibody	Rb pAb	Hu,Ms	WB, IHC-P, ELISA
	GTX113589	TNFRSF14 antibody [N2C3]	Rb pAb	Hu,Ms	WB

Stimulatory molecules

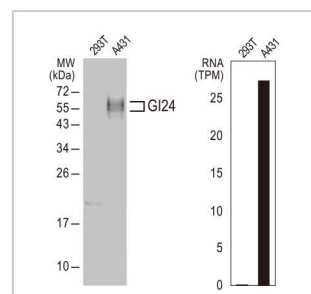
	Cat. No.	Product Name	Clonality	Reactivity	Applications
CD27	GTX34479	CD27 antibody [LPFS2/1611]	Ms mAb	Hu	ICC/IF, IHC-P, FACS, ELISA, Protein Array
CD28	GTX637068	CD28 antibody [HL1589]	Rec Rb mAb	Hu,Cat,Dog	WB, ICC/IF, IHC-P
	GTX33959	CD28 antibody	Rb pAb	Hu,Ms,Rat	IHC-P, FACS
CD40	GTX18028	CD40 antibody [C40/2383]	Ms mAb	Hu	IHC-P, FACS, ELISA, Protein Array
	GTX13944	CD40 antibody [FGK4.5/ FGK45]	Rat mAb	Ms	WB, Activation
CD40L (CD154)	GTX01484	CD40L / CD154 antibody [5C8]	Ms mAb	Hu,CIMK,RMK	FACS
	GTX81854	CD40L / CD154 antibody, N-term	Rb pAb	Hu	WB, ICC/IF, IHC-P, FACS
CD70	GTX41859	CD70 antibody [Bu69]	Ms mAb	Hu	IHC-Fr, FACS
	GTX108452	CD70 antibody [C2C3], C-term	Rb pAb	Hu	WB
	GTX53916	CD70 antibody	Rb pAb	Hu,Ms	WB, ICC/IF, IHC-P
CD134 (OX40)	GTX51548	CD134 antibody	Rb pAb	Hu,Rat	IHC-P
	GTX12380	CD134 antibody	Rb pAb	Hu	WB
	GTX74995	CD134 antibody [OX86]	Rat mAb	Ms,Rat	IHC-Fr, FACS, Blocking
CD252 (OX40L)	GTX637310	CD252 antibody [HL1711]	Rec Rb mAb	Hu	WB
	GTX42201	CD252 antibody [OX-89]	Rat mAb	Ms	IHC-Fr, FACS
CD137 (4-1BB)	GTX02726	CD137 antibody [r4-1BB/4603]	Ms mAb	Hu	IHC-P
	GTX66655	CD137 antibody	Rb pAb	Hu,Ms,Rat	WB
CD137L (4-1BBL)	GTX117355	4-1BBL / CD137L antibody [N2C3]	Rb pAb	Hu	WB, IP
GITR	GTX52766	GITR antibody [7R12]	Ms mAb	Hu	WB, FACS, Neutralizing/Inhibition
	GTX53439	GITR antibody [6D39]	Rat mAb	Ms	WB
	GTX53155	GITR antibody [7C13]	Rat mAb	Ms	IHC-P, FACS
GITRL	GTX85076	GITRL antibody	Rb pAb	Hu,Ms	WB, ICC/IF, ELISA
	GTX64735	GITRL antibody	Rb pAb	Hu,Ms,Rat	WB



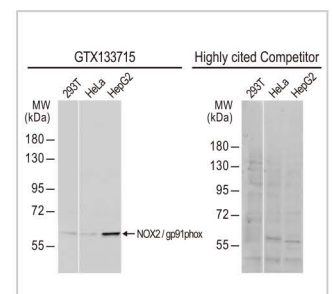
CD28 antibody [HL1589] (GTX637068)



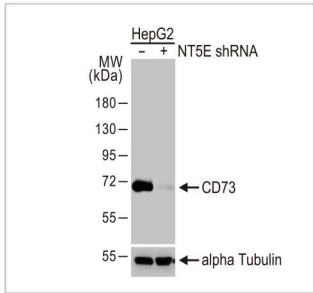
CD252 antibody [HL1711] (GTX637310)



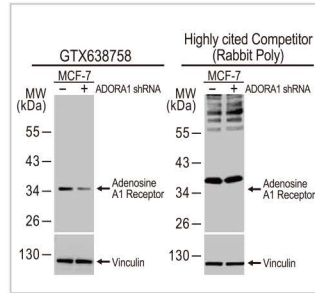
GI24 antibody (GTX104081)






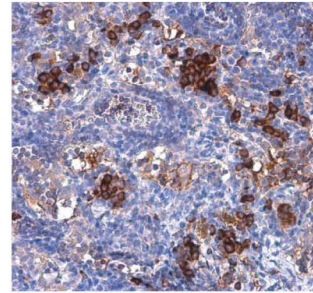
NOX2 / gp91phox antibody (GTX133715)







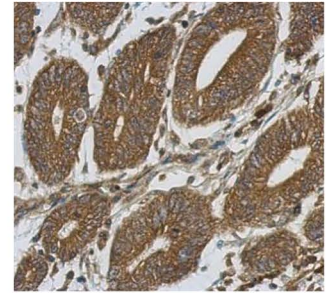
CD73 antibody [HL2493]
(GTX638851)   





Adenosine A1 Receptor
antibody [HL2442]
(GTX638758)    



IDO1 antibody [GT273]
(GTX634652)    




















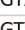









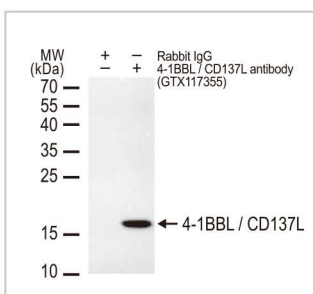
SIRP alpha antibody
(GTX112645)  

Stimulatory molecules

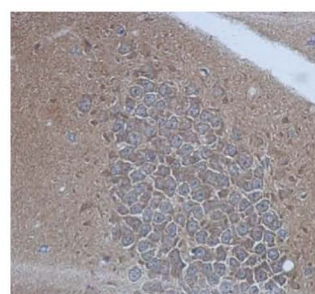
	Cat. No.	Product Name	Clonality	Reactivity	Applications
ICOS	GTX55669	ICOS antibody	Rb pAb	Hu,Ms,Rat	WB, IHC-P
	GTX129570	ICOS antibody	Rb pAb	Hu	WB
ICOSL	GTX32664	ICOS Ligand antibody	Rb pAb	Hu,Ms,Rat	WB, IHC-P
	 GTX01490	ICOS Ligand antibody [HK5.3]	Rat mAb	Ms	FACS, Neutralizing/Inhibition

Other molecules

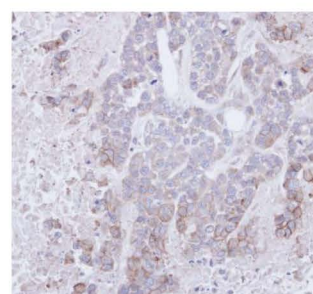
	Cat. No.	Product Name	Clonality	Reactivity	Applications
Adenosine Receptor	 GTX23460	Adenosine A1 Receptor antibody	Rb pAb	Hu,Ms,Rat	WB, ICC/IF, IHC-P, FACS, IHC
	 GTX100025	Adenosine A1 Receptor antibody [N3C2], Internal	Rb pAb	Hu,Ms,Cat	WB
	   GTX638758	Adenosine A1 Receptor antibody [HL2442]	Rec Rb mAb	Hu,Ms,Rat,Dog	WB, IHC-P
	 GTX132217	Adenosine A2b Receptor antibody	Rb pAb	Hu,Ms,Rat,Cat,Dog	WB, IHC-P
	GTX89506	Adenosine A2b Receptor antibody, C-term	Gt pAb	Hu	ICC/IF, IHC-P, FACS
CD38	GTX131656	Adenosine A3 Receptor antibody	Rb pAb	Hu,Ms,Rat	WB
	GTX81962	CD38 antibody, C-term	Rb pAb	Hu	WB, ICC/IF, IHC-P, FACS
CD39	GTX132579	CD38 antibody	Rb pAb	Hu	WB
	GTX00533	CD39 antibody [TU66]	Ms mAb	Hu	FACS
CD47	GTX57161	CD39 antibody	Rb pAb	Hu,Ms,Rat	WB, ICC/IF, IHC-P
	  GTX53912	CD47 antibody	Rb pAb	Hu,Ms,Rat	WB, ICC/IF, IHC-P
CD73	GTX132762	CD47 antibody	Rb pAb	Hu	WB
	   GTX638851	CD73 antibody [HL2493]	Rec Rb mAb	Hu,Ms,Rat,Zfsh	WB, IHC-P
	GTX17626	CD73 antibody [AD2]	Ms mAb	Hu	FACS, MS, CyTOF
	  GTX113509	CD73 antibody [N1N3]	Rb pAb	Hu,Ms	WB, ICC/IF, IHC-P, Neutralizing/Inhibition, PLA
IDO1	   GTX101140	CD73 antibody [N3C3]	Rb pAb	Hu	WB, ICC/IF, IHC-P
	    GTX634652	IDO1 antibody [GT273]	Ms mAb	Hu,Ms	WB, IHC-P
SIRP	   GTX113753	IDO1 antibody	Rb pAb	Hu,Rat	WB, IHC-Fr
	  GTX133715	NOX2 / gp91phox antibody	Rb pAb	Hu,Ms,Rat	WB, IHC-P
SIRP	  GTX112645	SIRP alpha antibody	Rb pAb	Hu,Ms	WB, ICC/IF, IHC-P
	GTX105390	SIRP gamma antibody	Rb pAb	Hu	WB



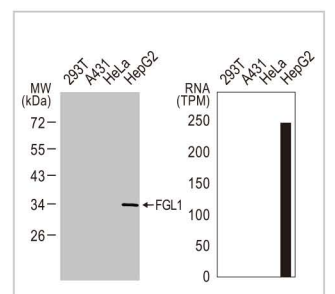
4-1BBL / CD137L antibody
[N2C3] (GTX117355)



CD226 antibody [N1C2]
(GTX118131)



CD272 antibody
(GTX112783)



FGL1 antibody [HL2317]
(GTX638480) 