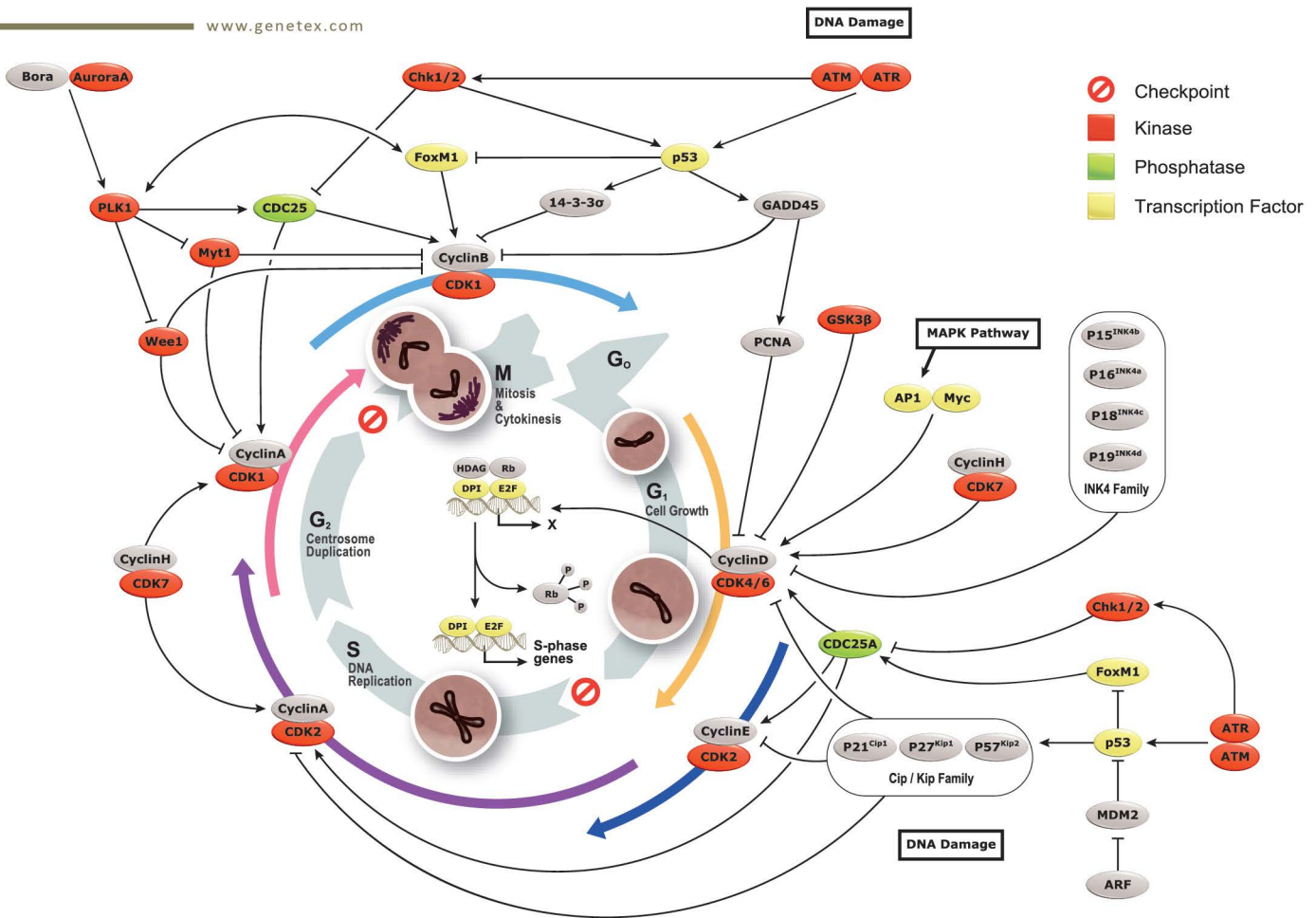


# Cell Cycle

- Your Expertise
- Our Antibodies
- Accelerated Discovery

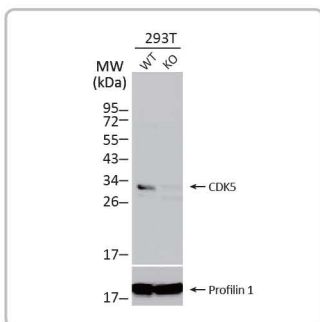
www.genetex.com



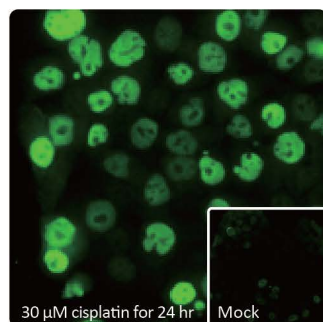
The cell cycle is an ordered set of events by which cells undertake growth and division into two daughter cells. In eukaryotes, the cell cycle is described by five phases: G<sub>0</sub>, G<sub>1</sub>, S, G<sub>2</sub>, and M. In G<sub>0</sub> phase, cells have entered a quiescent state or are not dividing. During G<sub>1</sub> period, the cells grow and accumulate nutrients for the subsequent S phase, where DNA replication occurs. The gap between S and M phases is termed G<sub>2</sub> period, during which the cells continue to grow and prepare for mitosis that occurs in M phase. All these processes are elaborately controlled to ensure proper cell development and renewal. The key molecules that program cell cycle are cyclins and cyclin-dependent kinases (CDKs), whereas inhibitors that prevent improper cell division are two families of genes, the Cip / Kip family and the INK4 family. Notably, these inhibitor genes are also termed tumor suppressor genes as they are instrumental in the prevention of tumor formation.

- Citation Support
- KO/KD Validation
- Comparable Abs
- Orthogonal Validation
- IP/MS Analysis

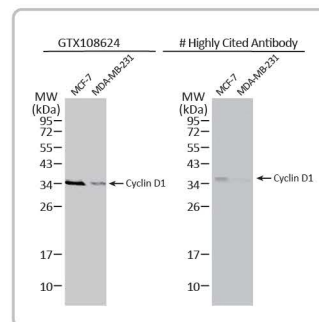
## Highlighted Products



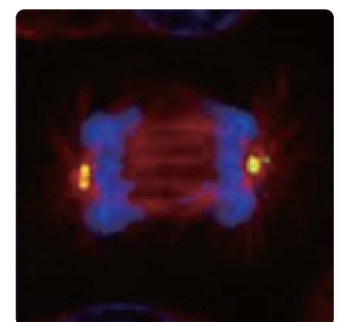
CDK5 antibody [C2C3], C-term (GTX108328)



p21 Cip1 antibody [GT1032] (GTX629543)



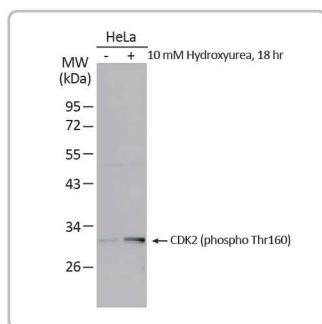
Cyclin D1 antibody [N1C3] (GTX108624)



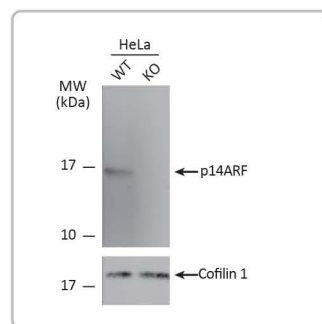
gamma Tubulin antibody (GTX113286)

## Cell-cycle proteins

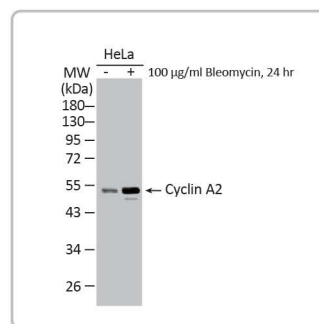
	Cat. No.	Product Name	Clonality	Reactivity	Applications	
CDK		GTX108120	CDC2 antibody [N1], N-term	Rb pAb	Hu, Ms, Rat	WB, ICC/IF, IHC-P, IP
		GTX133860	CDC2 (phospho Thr14) antibody	Rb pAb	Hu, Ms	WB
		GTX128155	CDC2 (phospho Tyr15) antibody	Rb pAb	Hu, Dm	WB, IHC-P, IP
		GTX101226	CDK2 antibody [N1C3]	Rb pAb	Hu, Japanese Medaka	WB
		GTX132802	CDK2 (phospho Tyr15) antibody	Rb pAb	Hu	WB
		GTX133862	CDK2 (phospho Thr160) antibody	Rb pAb	Hu	WB, IHC-P
		GTX105047	CDK3 antibody [N1C2]	Rb pAb	Hu	WB
		GTX636873	CDK4 antibody [HL1407]	Rec Rb mAb	Hu, Ms, Rat	WB, IHC-P
		GTX102993	CDK4 antibody	Rb pAb	Hu, Ms, Rat, Bov	WB, ICC/IF, IHC-P
		GTX108328	CDK5 antibody [C2C3], C-term	Rb pAb	Hu, Ms, Rat	WB, ICC/IF, IHC-P, IHC
		GTX130416	CDK5 (phospho Tyr15) antibody	Rb pAb	Hu	WB
		GTX103992	CDK6 antibody [N1C3]	Rb pAb	Hu, Ms	WB, ICC/IF, IHC-P
		GTX113159	CDK6 antibody [N3C3]	Rb pAb	Hu	WB, ICC/IF
		GTX111919	CDK7 antibody	Rb pAb	Hu	WB, IHC-P, IP
		GTX110495	CDK8 antibody [C3], C-term	Rb pAb	Hu, Ms	WB, IHC-P
		GTX107758	CDK9 antibody [N3C3]	Rb pAb	Hu, Ms, Rat	WB, ICC/IF, IHC-P
		GTX115974	CDK10 antibody [N3C3]	Rb pAb	Hu	WB, ICC/IF
		GTX107558	CDK15 antibody [N1C3]	Rb pAb	Hu	WB, IHC-P
	CDKI		GTX129903	CDKN2A / p14ARF antibody	Rb pAb	Hu
		GTX135119	CDKN2A / p16INK4a antibody	Rb pAb	Hu	WB, IHC-P
		GTX130798	p18 INK4c antibody	Rb pAb	Ms, Rat	WB, IHC-P
		GTX102414	p19 INK4d antibody	Rb pAb	Rat	WB
		GTX629543	p21 Cip1 antibody [GT1032]	Ms mAb	Hu, Ms	WB, ICC/IF, IHC-P, FACS, IP
		GTX112898	p21 Cip1 antibody	Rb pAb	Hu, Chk	WB, ICC/IF, IHC-P
		GTX100446	p27 Kip1 antibody	Rb pAb	Hu, Ms	WB, ICC/IF, IHC-P, IHC-Fr, IP, IHC
		GTX17353	p27 Kip1 (phospho Ser10) antibody	Rb pAb	Hu	WB, IHC-P
	GTX31859	p57 Kip2 antibody	Rb pAb	Hu	WB, ICC/IF, ELISA	
Cyclin		GTX27956	Cyclin A antibody	Rb pAb	Hu, Ms, Rat	WB, IP, IHC
		GTX103042	Cyclin A2 antibody	Rb pAb	Hu, Ms, Rat	WB, ICC/IF, IHC-P, IP
		GTX100911	Cyclin B1 antibody	Rb pAb	Hu, Ms	WB, ICC/IF, IHC-P
		GTX111118	Cyclin B2 antibody	Rb pAb	Hu, Rat	WB, ICC/IF, IHC-P
		GTX638223	Cyclin D1 antibody [HL2219]	Rec Rb mAb	Hu	WB
		GTX108624	Cyclin D1 antibody [N1C3]	Rb pAb	Hu, Rat, Cat, Dog	WB, ICC/IF, IHC-P, IP, ELISA, Sandwich ELISA
		GTX133418	Cyclin D2 antibody	Rb pAb	Hu	WB, ICC/IF, IHC-P
		GTX103045	Cyclin E1 antibody	Rb pAb	Hu	WB, ICC/IF
		GTX125940	Cyclin I antibody	Rb pAb	Hu	WB, IHC-P
		GTX106554	Cyclin I2 antibody [N3C3]	Rb pAb	Hu	WB
		GTX131754	Cyclin L1 antibody	Rb pAb	Hu	WB
		GTX115825	Cyclin M3 antibody [C1C3]	Rb pAb	Hu	WB
		GTX115824	Cyclin M4 antibody [C2C3], C-term	Rb pAb	Hu	WB, IHC-P
		GTX133413	Cyclin T1 antibody	Rb pAb	Hu, Ms, Rat	WB, ICC/IF
		GTX111944	Cyclin T2 antibody [C2C3], C-term	Rb pAb	Hu, Ms	WB, ICC/IF, IHC-P



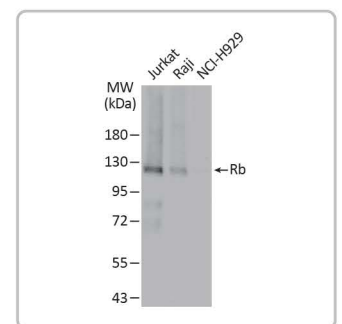
CDK2 (phospho Thr160) antibody (GTX133862)



CDKN2A / p14ARF antibody (GTX129903)



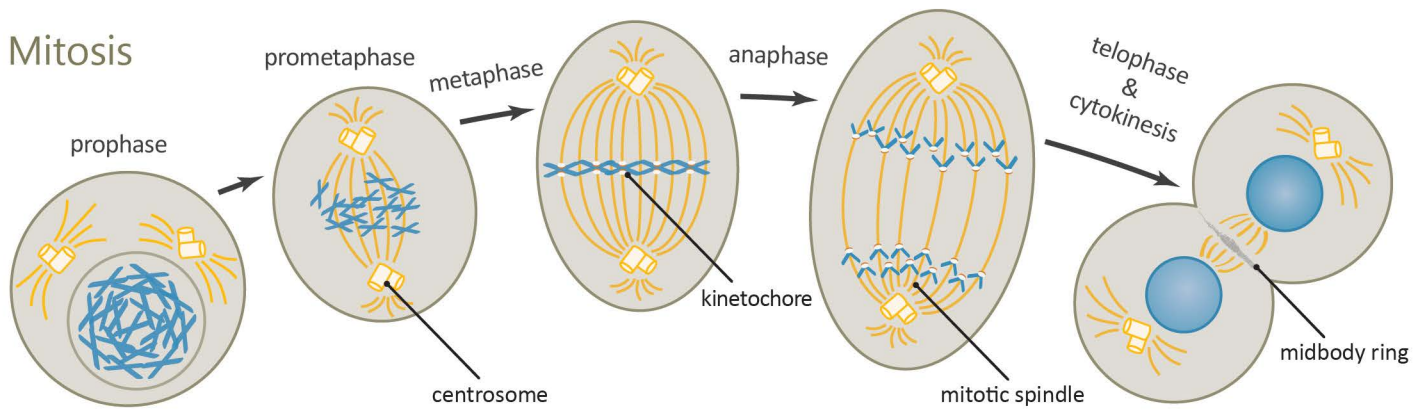
Cyclin A2 antibody (GTX103042)



Rb antibody (GTX100545)



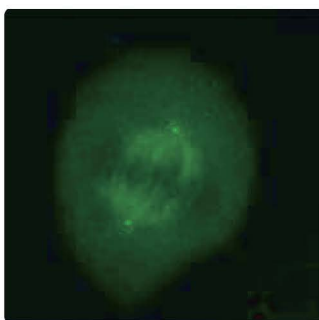
## Mitosis



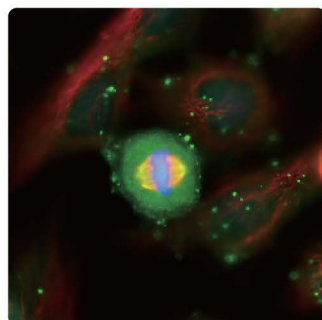
	Cat. No.	Product Name	Clonality	Reactivity	Applications
E2F	GTX09015	E2F1 antibody [GT1167]	Rec Rb mAb	Hu, Ms, Rat	WB
	GTX130030	E2F2 antibody	Rb pAb	Hu	WB
	GTX102302	E2F3 antibody [N2C3]	Rb pAb	Hu	WB
	GTX134346	E2F4 antibody	Rb pAb	Hu	WB
	GTX24071	E2F4 antibody [4E2F04]	Ms mAb	Hu, Rat	IHC-P, IHC-Fr, IHC
	GTX129491	E2F5 antibody	Rb pAb	Hu, Ms	WB
	GTX114373	E2F6 antibody	Rb pAb	Hu	WB, ICC/IF, IHC-P
Rb	GTX634627	Rb antibody [2B5]	Ms mAb	Hu	WB, ICC/IF
	GTX100545	Rb antibody	Rb pAb	Hu, Ms	WB, ICC/IF, IHC-P, IP
	GTX133893	Rb (phospho Ser780) antibody	Rb pAb	Hu	WB
Phosphatase	GTX102308	CDC25A antibody	Rb pAb	Hu, Ms, Rat	WB, IHC-P
	GTX113331	CDC25B antibody [C1C3]	Rb mAb	Hu	WB
	GTX102809	CDC25C antibody	Rb pAb	Hu	WB, ICC/IF, IHC-P
	GTX128153	CDC25C (phospho Ser216) antibody	Rb pAb	Hu	WB

## Mitotic apparatus proteins

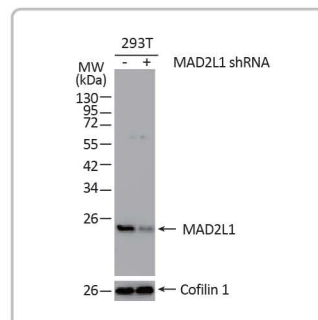
	Cat. No.	Product Name	Clonality	Reactivity	Applications
Centrosome	GTX130737	BBS4 antibody	Rb pAb	Ms, Rat	WB, IHC-P
	GTX114316	Centrin 1 antibody [N1C3]	Rb pAb	Hu, Bov	WB, ICC/IF, IHC-P, IP
	GTX129709	Centrin 2 antibody	Rb pAb	Hu	WB
	GTX114317	Centrin 3 antibody	Rb pAb	Hu, Ms, Rat	WB, ICC/IF, IHC-P
	GTX128027	CEP152 antibody	Rb pAb	Hu, Ms	WB, ICC/IF, IP, IHC
	GTX70094	CEP164 antibody [13]	Ms mAb	Hu	WB, ICC/IF, IP
	GTX131892	CEP192 antibody	Rb pAb	Hu	WB, IHC-P
	GTX636480	gamma Tubulin antibody [HL1175]	Rec Rb mAb	Hu, Ms, Rat, Cat, Dog	WB, ICC/IF
	GTX113286	gamma Tubulin antibody	Rb pAb	Hu, Ms, Rat, Zfsh	WB, ICC/IF, IHC-P, IHC-Wm, IP, IHC (Formalin), IHC
	GTX118735	NEK2 antibody	Rb pAb	Hu	WB, ICC/IF, IHC-P
	GTX131724	PCM1 antibody	Rb pAb	Hu	WB
Mitotic spindle	GTX111754	PLK4 antibody	Rb pAb	Hu	WB, ICC/IF, IHC-P
	GTX104620	Aurora A antibody [C3], C-term	Rb pAb	Hu	WB, ICC/IF, IHC-P
	GTX107497	BUB1 antibody	Rb pAb	Hu	WB, ICC/IF
	GTX111289	BUB1B antibody [N2C1], Internal	Rb pAb	Hu	WB, ICC/IF
	GTX113595	BUB3 antibody [N1C1]	Rb pAb	Hu, Ms, Rat	WB, IHC-P, IP
	GTX104680	MAD2L1 antibody [C2C3], C-term	Rb pAb	Hu, Rat	WB, ICC/IF, IHC-P, IP
GTX106289	RAE1 antibody [C3], C-term	Rb pAb	Hu	WB, ICC/IF	



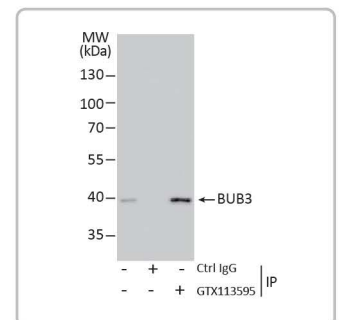
CEP152 antibody  
(GTX128027)



Aurora A antibody [C3], C-term  
(GTX104620)

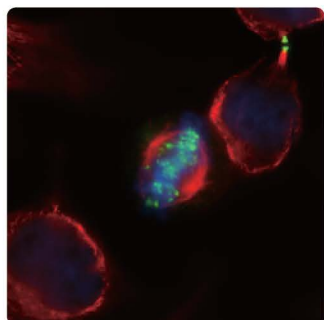


MAD2L1 antibody [C2C3], C-term  
(GTX104680)

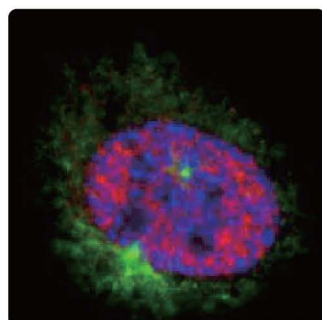


BUB3 antibody [N1C1]  
(GTX113595)

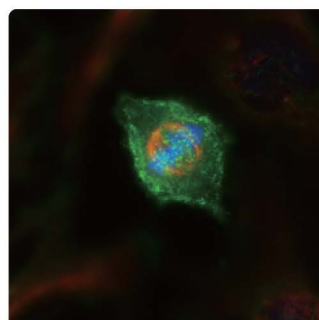
	Cat. No.	Product Name	Clonality	Reactivity	Applications	
Centromere	GTX132702	Aurora B antibody	Rb pAb	Hu, Zfsh	WB, ICC/IF	
	GTX103013	MCAK antibody [N1N3]	Rb pAb	Hu	WB, ICC/IF	
	GTX120919	MTUS2	Rb pAb	Hu, Rat	WB, IHC-P	
	GTX100052	Survivin antibody	Rb pAb	Hu, Ms	WB, ICC/IF, IHC-P, IP	
Kinetochores	GTX110993	Apc10 antibody [N1C3]	Rb pAb	Hu	WB, IHC-P	
	GTX110506	Apc11 antibody [N2C3]	Rb pAb	Hu	WB	
	GTX111137	CDC20 antibody	Rb pAb	Hu	WB, IP	
	GTX134430	CENPA antibody	Rb pAb	Hu	WB, IHC-P	
	GTX70137	CENPF antibody [14C10 1D8]	Ms mAb	Hu	WB, ICC/IF, IHC-P, IHC-Fr, FACS, IP	
	GTX100212	CENPF antibody [C3], C-term	Rb pAb	Hu, Zfsh	WB, ICC/IF, IHC-P, IHC-Wm	
	GTX115695	CLASP1 antibody	Rb pAb	Hu, Ms	WB, ICC/IF, IHC-P	
	GTX117504	CLIP170 antibody [N1], N-term	Rb pAb	Hu, Ms, Rat	WB, ICC/IF	
	GTX101452	DYNC1H1 antibody	Rb pAb	Hu	WB, ICC/IF	
	GTX112355	DYNC1I1 antibody [N3C2], Internal	Rb pAb	Hu	WB, IHC-P	
	GTX112419	DYNC1I2 antibody	Rb pAb	Hu, Ms	WB, ICC/IF, IHC-P	
	GTX120114	DYNC1L1 antibody	Rb pAb	Hu, Ms, Rat	WB, ICC/IF, IHC-P, IP	
	GTX80684	Dynein antibody [74.1]	Ms mAb	Hu, Rat	WB, ICC/IF, IHC-Wm, FACS, IP	
	GTX70268	Hec1 antibody [9G3.23]	Ms mAb	Hu, Ms, Hm, Kg	WB, ICC/IF, IHC-Fr, FACS, IP, PLA	
	GTX110735	Hec1 antibody	Rb pAb	Hu	WB, IP	
	GTX70017	Hec1 (phospho Ser 55) antibody	Rb pAb	Hu, Ms, Rat, Kg	WB, ICC/IF, IP, ELISA	
	GTX70013	Hec1 (phospho Ser 165) antibody	Rb pAb	Hu, Ms, Rat, Kg	WB, ICC/IF, ELISA	
	GTX115759	KIF4A antibody [N1N2], N-term	Rb pAb	Hu	WB, ICC/IF, IHC-P	
	GTX104875	KIF5A antibody [C3], C-term	Rb pAb	Hu, Ms, Rat	WB, ICC/IF, IHC-P	
	GTX130782	KIF7 antibody	Rb pAb	Hu	WB	
	GTX117117	KIF13A antibody [N3C1], Internal	Rb pAb	Hu, Rat	WB, ICC/IF, IHC-P	
	GTX103196	KIF14 antibody [N1N2], N-term	Rb pAb	Hu	WB	
	GTX109519	MAD1 antibody	Rb pAb	Hu, Ms, Rat, Potoroo	WB, ICC/IF, IHC-P, IP, ChIP assay	
	GTX103071	MCM2 antibody [N1N2], N-term	Rb pAb	Hu	WB, ICC/IF, IP	
	GTX130138	MIS12 antibody	Rb pAb	Hu	WB, IP	
	GTX632184	NUF2 antibody [GT644]	Ms mAb	Hu	WB, IP	
	GTX110734	NUF2 antibody	Rb pAb	Hu	WB, ICC/IF	
	GTX114700	RanGAP1 antibody [N1N3]	Rb pAb	Hu, Ms, Rat	WB	
	GTX107155	ZWINT antibody	Rb pAb	Hu	WB, ICC/IF	
	Midbody	GTX638140	alpha Tubulin antibody [HL2162]	Rec Rb mAb	Hu	WB
		GTX628802	alpha Tubulin antibody [GT114]	Ms mAb	Hu, Ms, Rat, Zfsh, Dm, Crucian carp	WB, ICC/IF, IHC-P, IHC-Fr, FACS
		GTX112141	alpha Tubulin antibody	Rb pAb	Hu, Ms, Rat, Dm, Chk, C. elegans, Mosq, Tetrahymena	WB, ICC/IF, IHC-P, IHC-Fr
GTX112190		CEP55 antibody [N2C3]	Rb pAb	Hu	WB, ICC/IF	
GTX116003		KIF20A antibody	Rb pAb	Hu	WB	
GTX120875		MKLP1 antibody [N1N2], N-term	Rb pAb	Hu, Ms, Rat	WB, ICC/IF	
GTX104302		PLK1 antibody [N2C2], Internal	Rb pAb	Hu, Ms	WB, ICC/IF, IHC-P	
GTX101693		Septin 2 antibody [N1N3]	Rb pAb	Hu, Ms	WB, IHC-P	
GTX635396		TSG101 antibody [4A10-RB]	Rec Rb mAb	Hu	WB, ICC/IF	
GTX70255		TSG101 antibody [4A10]	Rec Ms mAb	Hu, Ms, Rat, Zfsh, Dog, Hm, Pig, Mk	WB, ICC/IF, IHC-P, FACS, IP, ELISA, EM, IHC, IHC(Free Floating)	
	GTX118736	TSG101 antibody	Rb pAb	Hu, Ms	WB, IHC-P, IP, ELISA, Sandwich ELISA	



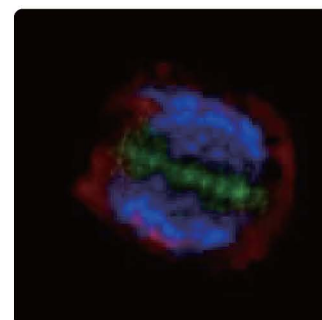
Aurora B antibody (GTX132702)



CENPF antibody [14C10 1D8] (GTX70137)



Hec1 antibody [9G3.23] (GTX70268)



Survivin antibody (GTX100052)