

IVD-related Products

Your Expertise

Our Antibodies

Accelerated Discovery

Top-Quality Recombinant Monoclonal Antibodies & Recombinant Proteins

- High Reproducibility
- High Specificity
- Performance Consistency
- Scalable Bulk Production
- International QMS Certifications
- Stringent Validation and Assessment

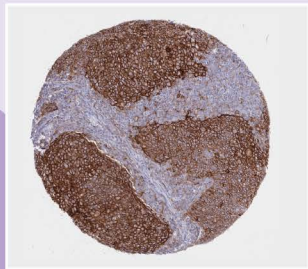


 Citation Support
  Recombinant
  KO/KD Validation
  Comparable Abs
  Orthogonal Validation
  Protein Overexpression
  HistoMAX

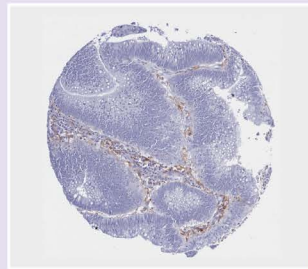
Immunohistochemistry – Paraffin (IHC-P)

- Protocol information for both manual staining and for widely used autostainers: Dako/Bond RX/Ventana
- Validation performed on more than 70 human normal tissues and relevant tumor sections

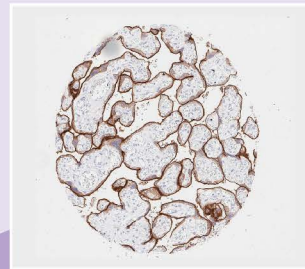
PD-L1 antibody [HL1041] (GTX635975)



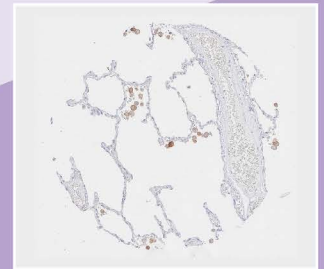
PD-L1 (+)
Oral squamous cell carcinoma




PD-L1 (-)
Colorectal adenocarcinoma
PD-L1 (+)
Inflammatory cells

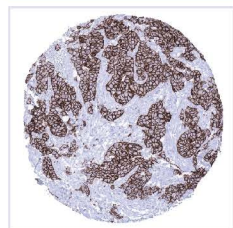


Placenta (mature)
PD-L1 (+)
Syncytiotrophoblast

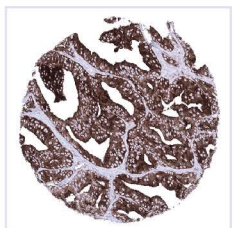


Lung
PD-L1 (+)
Alveolar macrophages

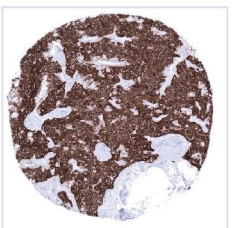
Her2 / ErbB2 antibody [MSVA-340R] HistoMAX (GTX04428) 	Prostatic Acid Phosphatase antibody [MSVA-452M] HistoMAX (GTX04396) 	Synaptophysin antibody [MSVA-462R] HistoMAX (GTX04371) 	Cytokeratin 14 antibody [MSVA-614R] HistoMAX (GTX04377) 	EpCAM antibody [MSVA-326R] HistoMAX (GTX04380) 	LI-Cadherin antibody [MSVA-517M] HistoMAX (GTX04447) 
---	---	--	---	--	--



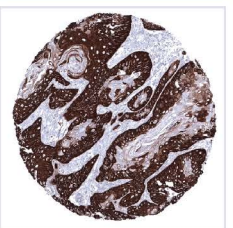
Breast Cancer



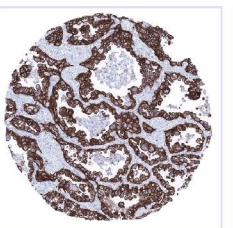
Prostatic Adenocarcinoma



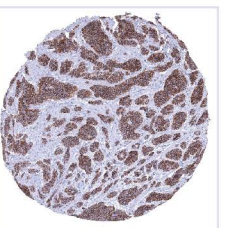
Thyroid Medullary Carcinoma



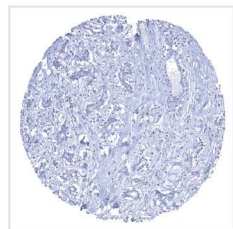
Esophageal Squamous Cell Carcinoma



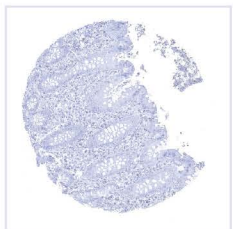
Lung Adenocarcinoma



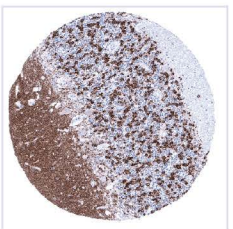
Ileal Neuroendocrine Tumor



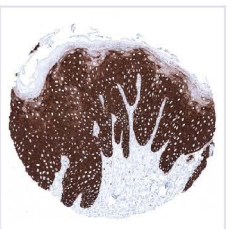
Normal Breast



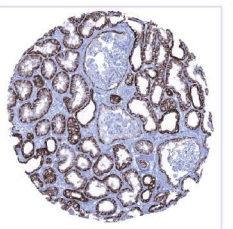
Normal Appendix Mucosa



Normal Cerebellum



Normal Skin Squamous Epithelium



Normal Kidney



Normal Rectum Mucosa





Enzyme-linked Immunosorbent Assay (ELISA)

<p>SARS-CoV-2 Neutralizing Antibody ELISA Kit (Omicron BA.1 / BA.2 / BA.4 / BA.5) (GTX537233)</p>		IL6	Enterovirus D68	Tau (p Thr181)	ANP
		<p>Capture: IL6 antibody [GT1535] (GTX636571)</p> <p>Detection: IL6 antibody [HL2389] (GTX638598)</p>	<p>Capture: Enterovirus D68 VP1 antibody [GT11610] (GTX633688)</p> <p>Detection: Enterovirus D68 VP1 antibody [HL1997] (GTX637898)</p>	<p>Capture: Tau (phospho Thr181) antibody [HL2497] (GTX638855)</p> <p>Detection: Tau (phospho Thr181) antibody [HL2498] (GTX638856)</p>	<p>Capture: ANP antibody [GT1068] (GTX634219)</p> <p>Detection: ANP antibody [HL2617] (GTX639071)</p>

Lateral Flow Assay (LFA)



	<p>SARS-CoV-2 (COVID-19)</p>	<p>Influenza A Virus (Flu A)</p>	<p>Influenza B Virus (Flu B)</p>	<p>Respiratory Syncytial Virus (RSV)</p>	<p>3-in-1 Test for SARS-CoV-2, Flu A and Flu B</p>			<p>Human Papillomavirus type 16 (HPV 16)</p>
Capture	SARS-CoV-2 N antibody [HL455] (GTX635688)	Flu A NP antibody [HL1078] (GTX636199)	Flu B NP antibody [HL1069] (GTX636100)	RSV NP antibody [HL1248] (GTX636650)	SARS-CoV-2 N antibody [HL455] (GTX635688)	Flu A NP antibody [HL1952] (GTX637789)	Flu B NP antibody [HL1073] (GTX636194)	HPV type 16 E7 antibody [HL1647] (GTX637228)
Detection	SARS-CoV-2 N antibody [HL448] (GTX635686)	Flu A NP antibody [HL1953] (GTX637790)	Flu B NP antibody [HL1068] (GTX636099)	RSV NP antibody [HL1246] (GTX636648)	SARS-CoV-2 N antibody [HL5511] (GTX635689)	Flu A NP antibody [HL1078] (GTX636199)	Flu B NP antibody [HL1068] (GTX636099)	HPV type 16 E7 antibody [HL1821] (GTX637546)
Samples	1. SARS-CoV-2 N (GTX135592-pro) 2. Lysis buffer	1. Flu A NP (H1N1) (GTX135904-pro) 2. Flu A NP (H3N2) (GTX136317-pro) 3. Lysis buffer	1. Flu B NP (B/Victoria/02/1987) (GTX136277-pro) 2. Flu B NP (B/Sydney/3/2004) (GTX135867-pro) 3. Lysis buffer	1. RSV type A NP (GTX136751-pro) 2. RSV type B NP (GTX136931-pro) 3. Lysis buffer	1. Running buffer 2. Mixture of SARS-CoV-2 (GTX135592-pro), Flu A-H1N1 (GTX135904-pro), and Flu B NP (GTX135867-pro) 3. Lysis buffer	1. HPV16 E7 (GTX133411-pro) 2. HPV18 E7 (GTX133412-pro) 3. Lysis buffer		

N: Nucleocapsid NP: Nucleoprotein

Animal Health



<p>IHC</p> <p>Porcine circovirus type 2 / PCV2 Capsid antibody [GT863] (GTX634210)</p>	<p>ELISA</p> <p>Capture: ASFV p54 antibody [HL1287] (GTX636701) Detection: ASFV p54 antibody [HL1289] (GTX636703)</p>	<p>LFA</p> <p>Capture: ASFV p54 antibody [HL1287] (GTX636701) Detection: ASFV p54 antibody [HL1289] (GTX636703)</p>	<p>LFA</p> <p>Capture: ASFV p54 antibody [HL1219] (GTX636563) Detection: ASFV p54 antibody [HL1289] (GTX636703)</p>
--	---	---	---