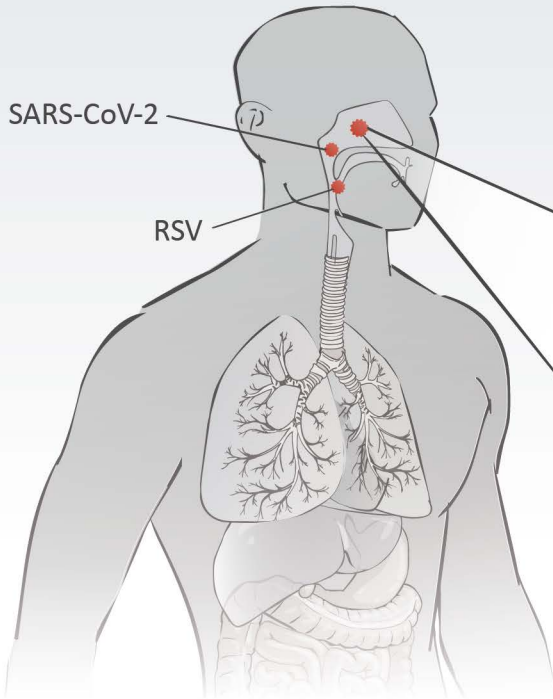
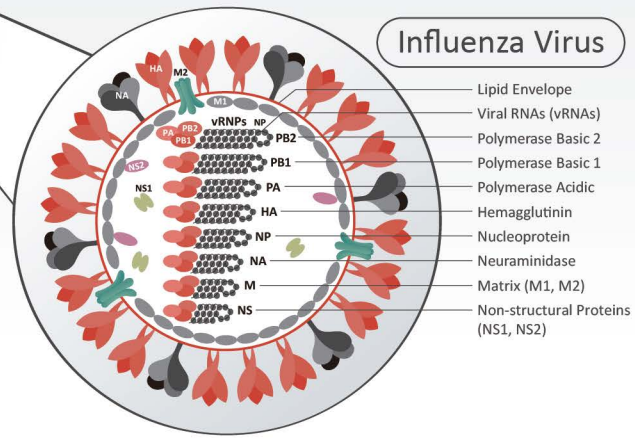


Lateral Flow Antibody Pairs for Respiratory Infectious Disease



- Your Expertise
- Our Antibodies
- Accelerated Discovery



www.genetex.com

Citation Support Recombinant Comparable Abs Orthogonal Validation

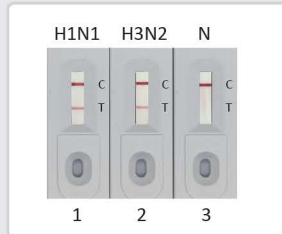
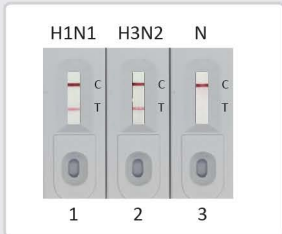
Influenza A Virus (FluA)

Samples :

- Influenza A virus Nucleoprotein (A/California/2009 (H1N1)) (GTX135904-pro)
- Influenza A virus Nucleoprotein (A/Hong Kong/2671/2019 (H3N2)) (GTX136317-pro)
- Lysis buffer

Recommended Pair for Lateral Flow Assay
Influenza A Virus Pair 1
 Detection: Clone HL1953 (GTX637790)
 Capture: Clone HL1078 (GTX636199)

Recommended Pair for Lateral Flow Assay
Influenza A Virus Pair 2
 Detection: Clone HL1953 (GTX637790)
 Capture: Clone HL1089 (GTX636247)



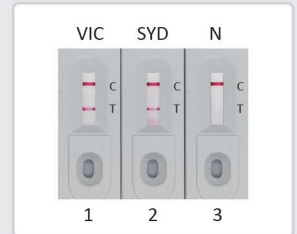
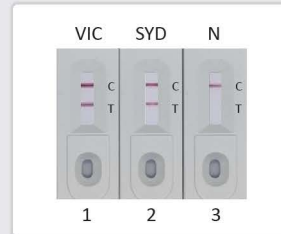
Influenza B Virus (FluB)

Samples :

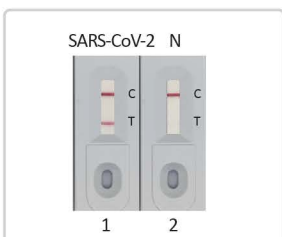
- Influenza B virus Nucleoprotein (B/Victoria/02/1987) (GTX136277-pro)
- Influenza B virus Nucleoprotein (B/Sydney/3/2004) (GTX135867-pro)
- Lysis buffer

Recommended Pair for Lateral Flow Assay
Influenza B Virus Pair
 Detection: Clone HL1068 (GTX636099)
 Capture: Clone HL1069 (GTX636100)

Recommended Pair for Lateral Flow Assay
Influenza B Virus Pair
 Detection: Clone HL1068 (GTX636099)
 Capture: Clone HL1073 (GTX636194)



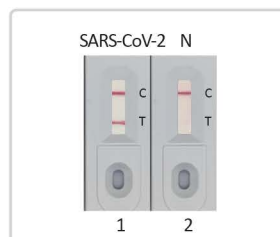
SARS-CoV-2 (COVID-19)



Samples :

- SARS-CoV-2 (COVID-19) Nucleocapsid protein (GTX135592-pro)
- Lysis buffer

Recommended Pair for Lateral Flow Assay
SARS-CoV-2 Pair 1
 Detection: Clone HL448 (GTX635686)
 Capture: Clone HL455 (GTX635688)



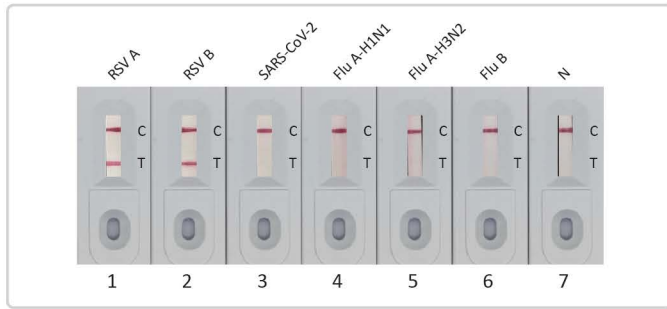
Samples :

- SARS-CoV-2 (COVID-19) Nucleocapsid protein (GTX135592-pro)
- Lysis buffer

Recommended Pair for Lateral Flow Assay
SARS-CoV-2 Pair 2
 Detection: Clone HL5410 (GTX635685)
 Capture: Clone HL455 (GTX635688)

Note: These pairs can detect the Omicron subvariants.

Respiratory Syncytial Virus (RSV)



Samples :

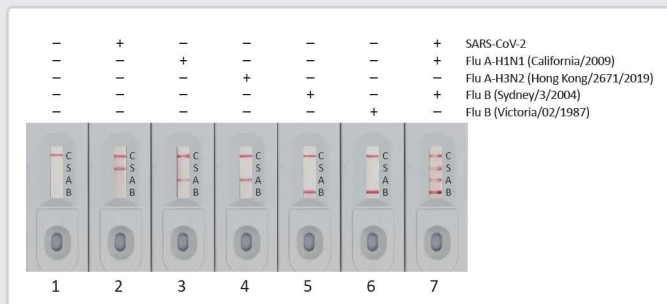
1. RSV type A Nucleoprotein (GTX136751-pro)
2. RSV type B Nucleoprotein (GTX136931-pro)
3. SARS-CoV-2 Nucleocapsid protein (GTX135592-pro)
4. FluA (H1N1) Nucleoprotein (GTX135904-pro)
5. FluA (H3N2) Nucleoprotein (GTX135903-pro)
6. FluB Nucleoprotein (GTX136277-pro)
7. Lysis buffer

Recommended Pair for Lateral Flow Assay

Respiratory Syncytial Virus Pair 1

- Detection: Clone HL1246 (GTX636648)
- Capture: Clone HL1248 (GTX636650)

3-in-1 Rapid Test (SARS-CoV-2, Influenza A virus, Influenza B virus)



Samples:

1. Lysis buffer
2. SARS-CoV-2 (COVID-19) Nucleocapsid protein, His tag (GTX135592-pro)
3. Influenza A virus Nucleoprotein (A/California/2009 (H1N1)) (GTX135904-pro)
4. Influenza A virus Nucleoprotein (A/Hong Kong/2671/2019 (H3N2))(GTX136317-pro)
5. Influenza B virus Nucleoprotein (B/Sydney/3/2004), DDDDK Tag (GTX135867-pro)
6. Influenza B virus Nucleoprotein (B/Victoria/02/1987), DDDDK Tag (GTX136277-pro)
7. Mixture of SARS-CoV-2, Flu A-H1N1 and Flu B Nucleoprotein

Recommended Pair for Lateral Flow Assay

Target	Detection	Capture
SARS-CoV-2 (S)	Clone HL448 (GTX635686)	Clone HL455 (GTX635688)
Flu A (A)	Clone HL1953 (GTX637790)	Clone HL1078 (GTX636199)
Flu B (B)	Clone HL1068 (GTX636099)	Clone HL1073 (GTX636194)

Featured Recombinant Proteins

Target	Cat. No.	Product Name	Expression System
Influenza A	GTX135868-pro	Influenza A Virus Nucleoprotein (A/WSN/1933 (H1N1)), DDDDK Tag	HEK293
	GTX135904-pro	Influenza A Virus Nucleoprotein (A/California/2009 (H1N1)), DDDDK Tag	HEK293
	GTX136317-pro	Influenza A Virus Nucleoprotein (A/Hong Kong/2671/2019 (H3N2)), DDDDK Tag	HEK293
	GTX135903-pro	Influenza A Virus Nucleoprotein (A/Kansas/2017/H3N2), DDDDK Tag	HEK293
Influenza B	GTX135867-pro	Influenza B Virus Nucleoprotein (B/Sydney/3/2004), DDDDK Tag	HEK293
	GTX136277-pro	Influenza B Virus Nucleoprotein (B/Victoria/02/1987), DDDDK Tag	HEK293
SARS-CoV-2	GTX135592-pro	SARS-CoV-2 Nucleocapsid protein, His tag	HEK293
	GTX136779-pro	SARS-CoV-2 Nucleocapsid protein, Omicron / BA.1 variant, His tag	HEK293
	GTX137219-pro	SARS-CoV-2 Nucleocapsid protein, Omicron / BA.2 / BA.5 variant, His tag	HEK293
	GTX137882-pro	SARS-CoV-2 Nucleocapsid protein, Omicron / BF.7 variant, His tag	HEK293
	GTX137883-pro	SARS-CoV-2 Nucleocapsid protein, Omicron / BQ.1 variant, His tag	HEK293
MERS-CoV	GTX135653-pro	MERS-CoV Nucleocapsid protein, DDDDK tag	HEK293
RSV	GTX136751-pro	Respiratory Syncytial Virus type A Nucleoprotein, DDDDK tag	HEK293
	GTX136931-pro	Respiratory Syncytial Virus type B Nucleoprotein, DDDDK tag	HEK293