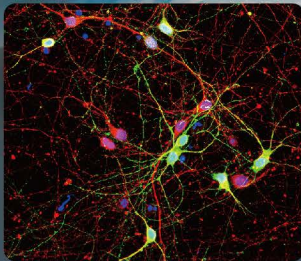



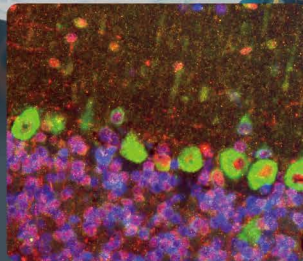
Neurotransmission

- Your Expertise
- Our Antibodies
- Accelerated Discovery

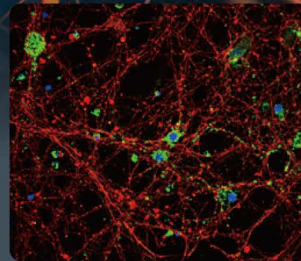
www.genetex.com



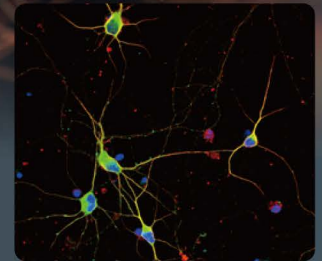
GABA antibody (GTX125988) 



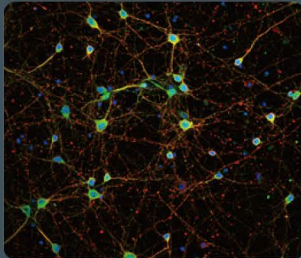
Dopamine Receptor D2 antibody [HL1584] (GTX637063) 




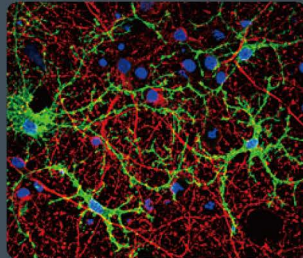
5-HT1A receptor antibody [N3C1], Internal (GTX104703) 



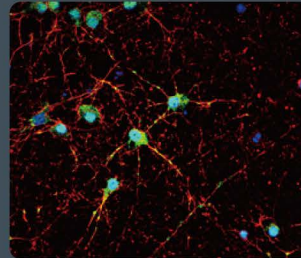
Dopamine Transporter antibody (GTX133152) 



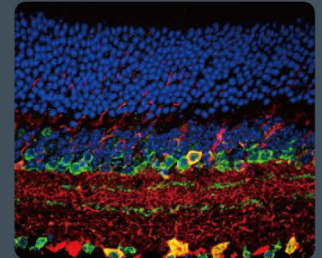
NMDAR1 antibody (GTX133097) 



EAAT1 antibody (GTX134060)

















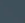

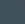

EAAT4 antibody (GTX134100)



Vesicular Acetylcholine Transporter antibody (GTX133251)

Dopamine

-  Recombinant
-  Citation Support
-  Comparable Abs
-  Orthogonal Validation

	Cat. No.	Product Name	Clonality	Reactivity	Applications
Receptor	 GTX100354	Dopamine Receptor D1 antibody [C2C3], C-term	Rb pAb	Hu, Ms, Rat	WB, IHC-Fr, ICC/IF, IHC-P
	  GTX636952	Dopamine Receptor D2 antibody [HL1478]	Rec Rb mAb	Hu, Ms, Rat	WB, ICC/IF, IHC-P
	 GTX637063	Dopamine Receptor D2 antibody [HL1584]	Rec Rb mAb	Ms, Rat	WB, IHC-P
	GTX66276	Dopamine Receptor D3 antibody	Rb pAb	Ms, Rat	WB
	GTX108178	Dopamine Receptor D4 antibody [N1], N-term	Rb pAb	Hu, Ms	WB, IHC-Fr
	 GTX132084	Dopamine Receptor D4 antibody	Rb pAb	Hu	WB
Transporter	 GTX77969	Dopamine Receptor D5 antibody	Rb pAb	Hu, Ms, Crab	WB, IHC-Fr, IHC-P
	  GTX133152	Dopamine Transporter antibody	Rb pAb	Hu, Ms, Rat, Zfsh	WB, ICC/IF, IHC-P
Synthesis	 GTX30448	DOPA Decarboxylase antibody	Rb pAb	Hu, Ms, Rat, Bov	WB, ICC/IF, IHC, IHC-Fr, IHC-P
	GTX134053	DOPA Decarboxylase antibody	Rb pAb	Ms, Rat	WB, ICC/IF, IHC-Fr, IHC-P
	 GTX113016	Tyrosine Hydroxylase antibody	Rb pAb	Hu, Ms, Rat, Vole, Calf	WB, ICC/IF, IHC-Fr, IHC-P
	  GTX102424	Tyrosine Hydroxylase antibody [N1C1]	Rb pAb	Hu, Ms, Rat, Zfsh	WB, ICC/IF, IHC-Fr, IHC-P, IHC-Wm
	GTX634481	Tyrosine Hydroxylase antibody [GT234]	Ms mAb	Ms, Rat	WB, IHC-P
	 GTX10372	Tyrosine Hydroxylase antibody [185]	Ms mAb	Hu, Ms, Rat	WB, ICC/IF, IHC-Fr, IHC-P
	 GTX16557	Tyrosine Hydroxylase (phospho Ser40) antibody	Rb pAb	Ms, Rat, Bird, Starling	WB, ICC/IF, IHC, IHC-Fr
	GTX113667	Cytochrome P450 2D6 antibody	Rb pAb	Hu	WB
	  GTX101616	Dopamine beta Hydroxylase antibody	Rb pAb	Hu, Ms, Rat	WB, IHC-P
	  GTX636467	Dopamine beta Hydroxylase antibody [HL1163]	Rec Rb mAb	Hu	WB

Histamine

	Cat. No.	Product Name	Clonality	Reactivity	Applications
Histamine	GTX134710	Histamine antibody	Rb pAb	Rat	ICC/IF, Dot, ELISA
Receptor	GTX108152	Histamine H2 Receptor antibody [N1], N-term	Rb pAb	Hu,Rat	WB, ICC/IF, IHC-P, FACS, IHC
	GTX100187	Histamine H3 Receptor antibody	Rb pAb	Hu	WB, IHC-P
	GTX100387	Histamine H4 Receptor antibody [N1N2], N-term	Rb pAb	Hu	WB
	GTX130116	Histamine H4 Receptor antibody	Rb pAb	Hu	WB
Synthesis	GTX112435	HDC antibody [N3C2], Internal	Rb pAb	Hu	WB
	GTX32647	HDC antibody	Rb pAb	Hu,Ms	WB

Norepinephrine / Epinephrine (NE / Epi)

	Cat. No.	Product Name	Clonality	Reactivity	Applications
NE/Epi	GTX13211	Adrenaline antibody	Rb pAb	Other	ELISA
Receptor	GTX100190	alpha 1a Adrenergic Receptor antibody	Rb pAb	Hu, Ms, Rat	WB, ICC/IF, IHC-P
	GTX100177	alpha 1b Adrenergic Receptor antibody	Rb pAb	Ms	WB
	GTX80804	alpha 2a Adrenergic Receptor antibody	Rb pAb	Hu, Ms, Rat	ICC/IF, IHC-Fr
	GTX81169	alpha 2b Adrenergic Receptor antibody, Internal	Rb pAb	Hu	WB, ICC/IF, IHC-P, FACS
	GTX100334	alpha 2c Adrenergic Receptor antibody [C2C3], C-term	Rb pAb	Hu	WB, IHC-P
	GTX108366	beta 1 Adrenergic Receptor antibody [C3], C-term	Rb pAb	Hu	WB, ICC/IF, IHC-P
	GTX23546	beta 1 Adrenergic Receptor antibody	Rb pAb	Hu, Ms, Rat, Cat, Primate	WB, ICC/IF, IHC-Fr, IHC
	GTX100040	beta 2 Adrenergic Receptor antibody [C2C3], C-term	Rb pAb	Hu, Rat	WB, IHC-P
	GTX108200	beta 3 Adrenergic Receptor antibody [C3], C-term	Rb pAb	Hu	WB
	GTX54925	beta 3 Adrenergic Receptor antibody	Rb pAb	Hu, Ms, Rat	WB
Transporter	GTX66236	SLC6A2 antibody	Rb pAb	Hu, Ms	WB
	GTX83635	VMAT2 antibody [9E11]	Ms mAb	Hu, Ms	WB, ICC/IF, IHC-P, FACS
Synthesis	GTX101616	Dopamine beta Hydroxylase antibody	Rb pAb	Hu, Ms, Rat	WB, IHC-P
	GTX114098	PNMT antibody [N2C3]	Rb pAb	Hu	WB, IHC-P




















Serotonin (5-HT)

	Cat. No.	Product Name	Clonality	Reactivity	Applications
Serotonin (5-HT)	GTX31099	Serotonin antibody [5-HT-H209]	Ms mAb	Hu, Ms, Chk, Pig, RMK	ICC/IF, IHC, IHC-Fr, IHC-P
	GTX104703	5-HT1A receptor antibody [N3C1], Internal	Rb pAb	Hu, Ms, Rat	WB, ICC/IF, IHC-P, IHC-Fr
Receptor	GTX100321	5-HT1F receptor antibody [C2C3], C-term	Rb pAb	Hu	WB, IHC-P
	GTX37799	5-HT2A receptor antibody	Rb pAb	Hu, Ms, Rat	WB, IHC-P, IHC-Fr, FACS
	GTX129900	5-HT2B receptor antibody	Rb pAb	Hu, Ms	WB
	GTX70503	5-HT2B receptor antibody	Rb pAb	Hu, Rat	WB, IHC-P
	GTX100329	5-HT2C receptor antibody	Rb pAb	Hu, Ms, Rat	WB, IHC-P
	GTX13897	5-HT3A receptor antibody	Rb pAb	Hu, Ms, Rat	WB, IHC-P
	GTX131835	5-HT4 receptor antibody	Rb pAb	Ms	WB
	GTX34002	5-HT6 receptor antibody	Rb pAb	Hu, Ms, Rat	WB, IP, ELISA
	GTX108157	5-HT7 receptor antibody [N1], N-term	Rb pAb	Hu	WB, ICC/IF
	Transporter	GTX133101	Serotonin Transporter antibody	Rb pAb	Rat
GTX31103		Serotonin Transporter antibody, Internal	Rb pAb	Hu, Rat	WB, ICC/IF
Synthesis	GTX109027	TPH1 antibody	Rb pAb	Hu	WB, ICC/IF
	GTX101962	TPH2 antibody [N3C3]	Rb pAb	Hu, Ms, Rat	WB, ICC/IF

Glycine

	Cat. No.	Product Name	Clonality	Reactivity	Applications
Receptor	GTX106112	Glycine Receptor alpha 1 antibody [N1C1]	Rb pAb	Hu, Rat	WB, ICC/IF, IHC-P
	GTX105634	Glycine Receptor alpha 2 antibody	Rb pAb	Hu, Ms	WB, IHC-P, IHC-Fr
	GTX108513	Glycine Receptor alpha 3 antibody	Rb pAb	Hu	WB
Synthesis & Degradation	GTX66030	AMT antibody	Rb pAb	Hu,Ms,Rat	WB
	GTX101245	DLD antibody	Rb pAb	Hu, Ms, Rat	WB, ICC/IF, IHC-P
	GTX110267	Glycine dehydrogenase antibody [N3C2-2], Internal	Rb pAb	Hu, Ms, Rat	WB, ICC/IF, IHC-P, IP
	GTX103195	SHMT1 antibody	Rb pAb	Hu	WB
	GTX125939	SHMT2 antibody	Rb pAb	Hu	WB, ICC/IF, IHC-P







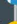
γ-aminobutyric acid (GABA)

	Cat. No.	Product Name	Clonality	Reactivity	Applications	
GABA	 GTX125988	GABA antibody	Rb pAb	Hu, Ms, Rat, Dm	ICC/IF, IHC-P, IHC-Fr, Dot, IHC	
	GTX134714	beta-Hydroxy-GABA antibody	Rb pAb	Rat	ICC/IF, Dot, ELISA	
Receptor	GTX133261	GABA A Receptor alpha 1 antibody	Rb pAb	Ms, Rat	WB	
	 GTX104027	GABA A Receptor alpha 1 antibody [N1C1]	Rb pAb	Hu, Rat	WB, IHC-P	
	  GTX82689	GABA A Receptor alpha 2 antibody	Rb pAb	Ms, Rat	WB	
	GTX105282	GABA A Receptor alpha 2 antibody [N1C2]	Rb pAb	Hu, Rat	WB	
	 GTX31001	GABA A Receptor alpha 3 antibody	Rb pAb	Ms, Rat	WB	
	GTX31003	GABA A Receptor alpha 4 antibody, Internal	Rb pAb	Hu	WB, IHC-P	
	GTX118345	GABA A Receptor alpha 5 antibody [N2C2], Internal	Rb pAb	Hu	WB	
	GTX130947	GABA A Receptor alpha 6 antibody	Rb pAb	Ms, Rat	WB	
	GTX42019	GABA A Receptor beta 1 antibody [S96-55]	Ms mAb	Hu, Ms, Rat	WB, ICC/IF	
	GTX54094	GABA A Receptor beta 2 antibody	Rb pAb	Ms	WB	
	 GTX82681	GABA A Receptor beta 3 antibody	Rb pAb	Ms, Rat	WB	
	 GTX82680	GABA A Receptor beta 3 (phospho Ser408/409) antibody	Rb pAb	Rat	WB	
	GTX31013	GABA A Receptor gamma 2 antibody	Rb pAb	Hu, Ms, Rat, Bov, Dog, Chk, Primate	WB, IHC	
	GTX31014	GABA A Receptor gamma 3 antibody	Rb pAb	Hu, Ms, Rat	WB	
	GTX80429	GABA A Receptor delta antibody, Internal	Rb pAb	Hu, Ms	WB, IHC-P, FACS	
	GTX102511	GABA B Receptor 1 antibody [N2C1], Internal	Rb pAb	Hu, Ms, Rat	WB, ICC/IF, IHC-P	
	GTX133165	GABA B Receptor 1 antibody	Rb pAb	Ms, Rat	WB	
	 GTX105986	GABA B Receptor 2 antibody [N2C1], Internal	Rb pAb	Hu, Rat	WB, IHC-Fr	
	Transporter	 GTX133150	GABA Transporter 1 / GAT1 antibody	Rb pAb	Ms, Rat	WB, ICC/IF, IHC-P, IHC-Fr
		  GTX637107	VGAT antibody [HL1616]	Rec Rb mAb	Hu, Ms	WB, IHC-P
Synthesis	  GTX636493	GAD65 antibody [HL1187]	Rec Rb mAb	Hu, Ms, Rat	WB, ICC/IF, IHC-P	
	  GTX636279	GAD67 antibody [HL1095]	Rec Rb mAb	Hu, Ms, Rat	WB, ICC/IF	
	  GTX636280	GAD67 antibody [HL1096]	Rec Rb mAb	Hu, Ms, Rat	WB, IHC-P	
	  GTX636487	GAD65 + GAD67 antibody [HL1181]	Rec Rb mAb	Hu, Ms, Rat	WB, ICC/IF, IHC-P	

Trace Amines

	Cat. No.	Product Name	Clonality	Reactivity	Applications
Receptor	GTX70597	TA1 antibody	Rb pAb	Hu	WB, IHC-P
	GTX71785	TA3 antibody	Rb pAb	Hu	IHC-P
	GTX70803	Trace Amine receptor 4 antibody	Rb pAb	Hu	IHC-P
	GTX108240	TAAR5 antibody [C2C3], C-term	Rb pAb	Hu, Ms	WB, ICC/IF
	GTX71819	GPCR GPR58 antibody	Rb pAb	Hu	IHC-P
	GTX13281	GPR102 antibody	Rb pAb	Hu	IHC-P

Acetylcholine (ACh)

	Cat. No.	Product Name	Clonality	Reactivity	Applications
Acetylcholine	GTX12585	Acetylcholine antibody [GT9014]	Ms mAb	Other	ELISA, ICC/IF
Nicotinic Receptor (nAChR)	GTX22804	AChR antibody [88B]	Ms mAb	Hu, Ms, Chk, Rat, Amph, Fsh, Rb	WB, ELISA, ICC/IF, IHC-Fr, IHC-P, IP
	GTX32423	AChR alpha 1 antibody	Rb pAb	Hu, Ms	WB
	GTX105495	AChR alpha 3 antibody	Rb pAb	Hu	WB, ICC/IF
	 GTX113653	AChR alpha 4 antibody [N1C1]	Rb pAb	Hu, Hm	WB, IHC-P
	GTX55490	AChR alpha 5 antibody	Rb pAb	Hu, Ms	WB
	GTX32988	AChR beta 1 antibody	Rb pAb	Ms	WB
	 GTX113654	AChR beta 2 antibody [N1C1]	Rb pAb	Ms, Rat	WB, IHC-P
	GTX88687	AChR beta 3 antibody, Internal	Gt pAb	Hu	WB
	GTX31080	AChR beta 4 antibody	Rb pAb	Hu	WB, IHC
	GTX118362	AChR gamma antibody	Rb pAb	Hu	WB
GTX77688	AChR epsilon antibody, N-term	Rb pAb	Hu	WB	
Muscarinic Receptor (mAChR)	 GTX31062	mAChR M1 antibody, C-term	Gt pAb	Hu, Ms	WB
	 GTX22805	mAChR M2 antibody [31-1D1]	Ms mAb	Hu, Ms, Pig, Rat	WB, FACS, ICC/IF, IHC-P, IP
	 GTX111637	mAChR M3 antibody	Rb pAb	Hu, Ms	WB, FACS, ICC/IF, IHC-Fr
	GTX71307	mAChR M4 antibody	Rb pAb	Hu	IHC-P
	GTX53955	mAChR M5 antibody	Rb pAb	Hu, Ms, Rat	WB, ICC/IF, IHC-P
Transporter	GTX133251	Vesicular Acetylcholine Transporter antibody	Rb pAb	Ms	WB, IHC-Fr, IHC-P
Synthesis & Degradation	 GTX113164	Choline Acetyltransferase antibody [N1N3]	Rb pAb	Hu, Ms, Rat	WB, ICC/IF, IHC-Fr, IHC-P
	 GTX22803	AChE antibody [HR2]	Ms mAb	Hu, Ms, Cat, Gpig, Rb, Bov	WB, ELISA, ICC/IF, IHC, IHC-Fr, IHC-P, IP
	GTX101648	AChE antibody	Rb pAb	Hu, Ms, Rat	WB, ICC/IF, IHC-Fr, IHC-P

Glutamate



	Cat. No.	Product Name	Clonality	Reactivity	Applications
Glutamate	GTX132945	GluR1 antibody	Rb pAb	Ms, Rat	WB, IHC-Fr
	GTX82669	GluR1 (phospho Ser831) antibody	Rb pAb	Ms, Rat	WB
AMPA receptor	GTX30221	GluR1 (phospho Ser845) antibody	Rb pAb	Rat	WB, ICC/IF, IHC
	GTX60613	GluR2 antibody [7G6]	Ms mAb	Hu	WB, FACS, ELISA
	GTX52325	GluR2 (phospho Ser880) antibody	Rb pAb	Hu, Ms, Rat	WB, IHC
	GTX32626	GluR3 antibody	Rb pAb	Hu, Ms	WB, ICC/IF
	GTX88589	GluR4 antibody, Internal	Rb pAb	Hu	WB, IHC-P
	GTX32189	GluR4 (phospho Ser862) antibody	Rb pAb	Hu, Ms, Rat	WB
	GTX31033	GluR5/GRIK1 antibody	Rb pAb	Hu, Ms, Rat	WB, ELISA, IHC, IHC-P
Kainate receptor	GTX55640	GluR6/GRIK2 antibody	Rb pAb	Hu, Ms	WB, ICC/IF
	GTX108489	GluR7/GRIK3 antibody [C3], C-term	Rb pAb	Hu	WB
	GTX85044	KA1/GRIK4 antibody	Rb pAb	Hu, Ms, Rat	WB, ELISA, IHC-P
	GTX85043	KA2/GRIK5 antibody	Rb pAb	Hu, Ms, Rat	WB, ELISA, IHC-P
Metabotropic receptor	GTX37416	mGluR1 antibody	Rb pAb	Hu, Ms, Rat	WB, ELISA, IHC-P
	GTX71711	mGluR2 antibody	Rb pAb	Hu	IHC-P
	GTX31056	mGluR2/3 antibody	Rb pAb	Hu, Ms, Rat	WB, ELISA, IHC, IHC-P
	GTX108212	mGluR3 antibody [C3], C-term	Rb pAb	Hu, Ms, Rat	WB, ICC/IF
	GTX55859	mGluR4 antibody	Rb pAb	Hu, Ms, Rat	WB, ICC/IF, IHC-P
	GTX133288	mGluR5 antibody	Rb pAb	Ms, Rat	WB, ICC/IF
	GTX108234	mGluR6 antibody	Rb pAb	Hu	WB, ICC/IF, IHC-P
	GTX31060	mGluR7 antibody	Gt pAb	Hu	WB
NMDA receptor	GTX133097	NMDAR1 antibody	Rb pAb	Ms, Rat, Dog	WB, ICC/IF, IHC-Fr, IHC-P
	GTX50168	NMDAR1 (phospho Ser896) antibody	Rb pAb	Ms	WB
	GTX134086	NMDAR2A antibody	Rb pAb	Ms, Rat	WB, ICC/IF
	GTX130184	NMDAR2B antibody	Rb pAb	Ms, Rat	WB, ICC/IF, IHC-P
	GTX109713	NMDAR2B antibody [C2C3], C-term	Rb pAb	Hu, Ms, Rat	WB, ICC/IF
	GTX130183	NMDAR2B (phospho Tyr1472) antibody	Rb pAb	Ms, Rat	WB, ICC/IF
	GTX82629	NDMAR2C antibody	Rb pAb	Hu, Ms, Rat	WB
	GTX37591	NDMAR2D antibody	Rb pAb	Rat	WB, IP
	GTX88061	NMDAR3B antibody, C-term	Rb pAb	Hu	WB
Transporter	GTX133148	vGluT1 antibody	Rb pAb	Ms, Rat	WB
	GTX133142	vGluT2 antibody	Rb pAb	Ms, Rat	WB, ICC/IF, IHC-Fr, IHC-P
	GTX134103	vGluT3 antibody	Rb pAb	Ms, Rat	WB, ICC/IF, IHC-Fr
	GTX133267	vGluT3 antibody	Rb pAb	Ms	WB, ICC/IF
	GTX134059	EAAT1 antibody	Rb pAb	Hu, Ms, Rat	IHC-P
	GTX134060	EAAT1 antibody	Rb pAb	Ms, Rat	WB, IHC-Fr, IHC-P
	GTX20262	EAAT1 antibody	Rb pAb	Hu, Ms, Rat, Bov	WB, ICC/IF, IHC-P, IHC-Fr, FACS, ELISA
	GTX134062	EAAT2 antibody	Rb pAb	Ms, Rat	WB, IHC-P
	GTX46834	EAAT3 antibody, N-term	Rb pAb	Hu	WB
	GTX134097	EAAT4 antibody	Rb pAb	Ms, Rat	WB, IHC-P
	GTX134100	EAAT4 antibody	Rb pAb	Ms, Rat	ICC/IF, IHC-Fr, IHC-P
	GTX134109	EAAT5 / SLC1A7 antibody	Rb pAb	Ms	IHC-P
	GTX134113	EAAT5 / SLC1A7 antibody	Rb pAb	Ms, Rat,	WB, ICC/IF
Synthesis	GTX30043	ALDH4A1 antibody	Rb pAb	Hu, Ms	WB, ICC/IF
	GTX114982	Glutaminase antibody [C1C3]	Rb pAb	Ms	WB
	GTX81012	GLS antibody, C-term	Rb pAb	Hu, Ms, Rat	WB, FACS, ICC/IF, IHC-P
	GTX133242	GLS2 antibody	Rb pAb	Ms, Rat	WB
	GTX131263	Glutaminase C antibody	Rb pAb	Hu, Ms	WB, ICC/IF, IHC-P, IP
	GTX632317	Glutaminase C antibody [GT3211]	Ms mAb	Hu, Ms	WB, ICC/IF, IHC-P
	GTX632265	Glutaminase C (GAC) antibody [GT1075]	Ms mAb	Hu	WB, ICC/IF
	GTX105765	Glutamate Dehydrogenase antibody	Rb pAb	Hu, Ms, Rat	WB, ELISA, ICC/IF, IHC-P
	GTX112361	Glutamate Dehydrogenase 1+2 antibody	Rb pAb	Hu, Ms, Rat	WB, ICC/IF, IHC-P
	GTX88164	Glutamate Dehydrogenase antibody, Internal	Gt pAb	Hu, Ms, Rat	WB, ICC/IF, IHC-P
	GTX112952	GPT antibody [N2C2], Internal	Rb pAb	Hu	WB, IHC-P
GTX109121	Glutamine synthetase antibody	Rb pAb	Hu, Ms, Rat	WB, ICC/IF, IHC-P, IHC-Fr, IP	
GTX630654	Glutamine synthetase antibody [GT1055]	Ms mAb	Hu, Ms, Rat	WB, ICC/IF, IHC-P, IHC-Fr	



International

Tel 886.3.6208988
Fax 886.3.6208989

Address 6F-2, No.89, Dongmei Rd., Hsinchu 300, Taiwan (R.O.C.)
E-mail international@genetex.com

USA

Toll-free 1.877.GeneTex(1.877.436.3839)
Fax 1.949.309.2888

Address 2456 Alton Parkway, Irvine, CA 92606 USA
E-mail info@genetex.com

www.genetex.com

PD-N002-220920