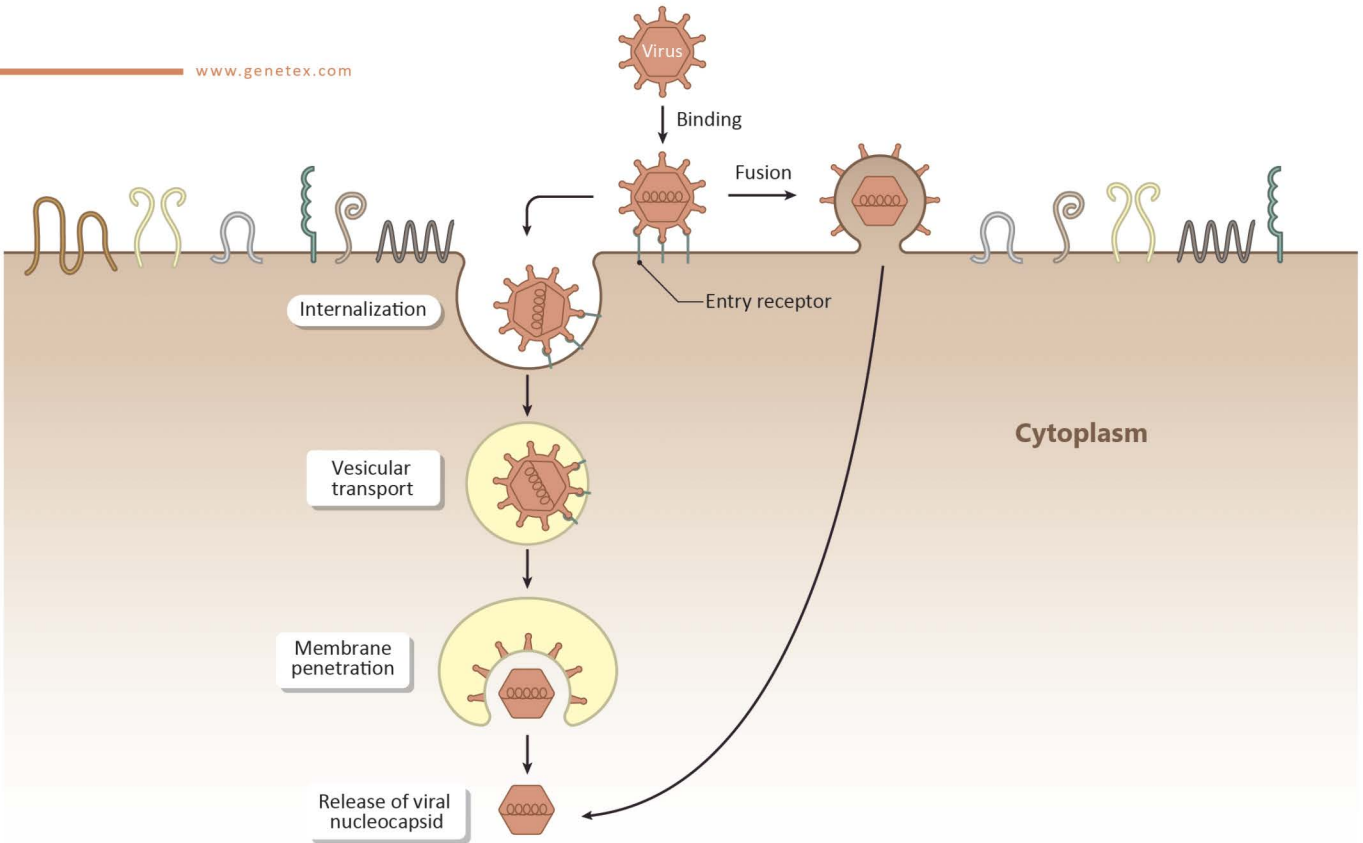


- Your Expertise
- Our Antibodies
- Accelerated Discovery

Recombinant Antibodies for Infectious Disease Research

www.genetex.com

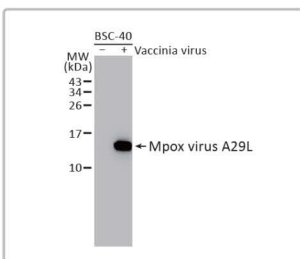


Advantages of Using GeneTex's Recombinant Monoclonal Antibodies

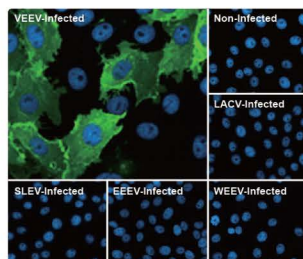
- Superior Sensitivity
- High Specificity
- Lower Background Signal
- Consistent Performance
- Stringent Validation
- Sustainable Production

Highlighted Products

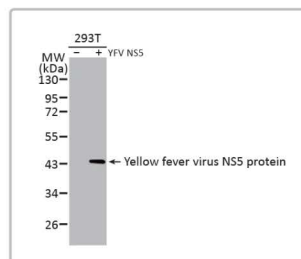
Recombinant Orthogonal Validation



Mpxv virus A29L antibody [HL2527] (GTX638888)



Venezuelan equine encephalitis virus nsP1 antibody [HL1472] (GTX636946)



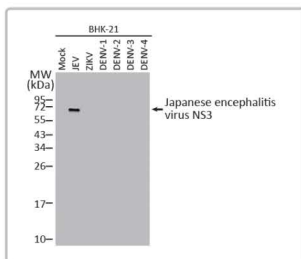
Yellow fever virus NS5 protein antibody [HL2916] (GTX640259)



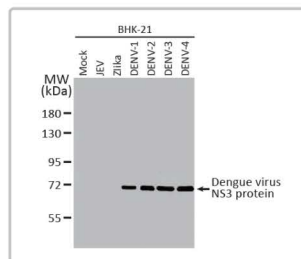
PRRS virus GP5 protein antibody [HL2872] (GTX640149)

Highlighted Antibodies for Infectious Disease Research

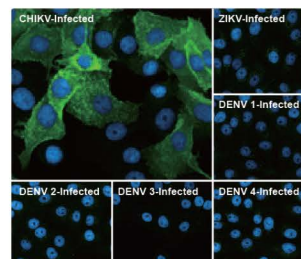
	Cat. No.	Target	Clone Name	Clonality	Applications
African Swine Fever Virus	GTX63701	ASFV p54	HL1287	Rec Rb mAb	WB, ICC/IF, ELISA, Lateral Flow, Sandwich ELISA
	GTX637025	Avian influenza A virus H5N8 HA (Hemagglutinin)	HL1550	Rec Rb mAb	WB, IHC-P (cell pellet)
Avian Influenza A Virus	GTX638625	Avian influenza A virus H9N2 HA (Hemagglutinin)	HL2408	Rec Rb mAb	WB, ICC/IF
	GTX637973	Chikungunya virus E1	HL2069	Rec Rb mAb	WB, IHC-P
Chikungunya Virus	GTX638825	Chikungunya virus E3	HL2476	Rec Rb mAb	WB, ICC/IF
	GTX639057	Chikungunya virus nsP1	HL2605	Rec Rb mAb	WB, ICC/IF
	GTX636962	Chikungunya virus nsP2	HL1488	Rec Rb mAb	WB, ICC/IF, IHC-P (cell pellet)
	GTX638828	Chikungunya virus nsP3	HL2479	Rec Rb mAb	WB, ICC/IF, IHC-P (cell pellet)
	GTX638958	Chikungunya virus nsP4	HL2580	Rec Rb mAb	WB, ICC/IF
	GTX639659	Dengue virus Capsid protein	HL2791	Rec Rb mAb	WB, ICC/IF
	GTX637997	Dengue virus Envelope protein	HL2089	Rec Rb mAb	WB, ICC/IF
Dengue Virus	GTX637892	Dengue virus NS1 protein	HL1991	Rec Rb mAb	WB, ICC/IF
	GTX638874	Dengue virus NS2B protein	HL2513	Rec Rb mAb	WB, ICC/IF
	GTX638284	Dengue virus NS3 protein	HL2239	Rec Rb mAb	WB, ICC/IF
	GTX640626	Dengue virus NS4B protein	HL3134	Rec Rb mAb	WB
	GTX637688	Enterovirus 71 VP1	HL1929	Rec Rb mAb	WB, ICC/IF, ELISA, Sandwich ELISA
	GTX637898	Enterovirus D68 VP1	HL1997	Rec Rb mAb	WB, ICC/IF, ELISA, Lateral Flow, Sandwich ELISA
	GTX640842	Enterovirus D68 VP3	HL3202	Rec Rb mAb	WB
Enterovirus	GTX636028	Hepatitis D virus Large delta + Small delta protein	HL1053	Rec Rb mAb	WB, ICC/IF
	GTX636026	Hepatitis D virus Large delta protein	HL1051	Rec Rb mAb	WB, ICC/IF
Hepatitis D Virus	GTX637228	Human papillomavirus type 16 E7	HL1647	Rec Rb mAb	ICC/IF, ELISA, Lateral Flow, Sandwich ELISA
	GTX638883	Human papillomavirus type 18 E7	HL2522	Rec Rb mAb	WB, ELISA, IHC, Lateral Flow
Human Papillomavirus	GTX637034	Influenza A virus H10N3 HA (Hemagglutinin)	HL1559	Rec Rb mAb	ICC/IF, IHC-P (cell pellet)
	GTX640908	Influenza A virus H1N1 HA (Hemagglutinin)	HL3261	Rec Rb mAb	WB
Influenza A Virus	GTX636323	Influenza A virus H1N1 NA (Neuraminidase)	HL1108	Rec Rb mAb	WB, ICC/IF
	GTX638602	Influenza A virus H3N2 HA (Hemagglutinin)	HL2393	Rec Rb mAb	WB, ICC/IF
	GTX636675	Influenza A virus M1 (matrix protein)	HL1273	Rec Rb mAb	WB, ICC/IF, IHC-P (cell pellet)
	GTX637581	Influenza A virus M2 (matrix protein)	HL1856	Rec Rb mAb	WB, ICC/IF
	GTX638102	Influenza A virus NS1 (nonstructural protein)	HL2130	Rec Rb mAb	WB, ICC/IF
	GTX636247	Influenza A virus Nucleoprotein	HL1089	Rec Rb mAb	WB, ICC/IF, ELISA, Lateral Flow, Sandwich ELISA, IHC-P (cell pellet)
	GTX636828	Influenza A virus PA protein	HL1388	Rec Rb mAb	WB, ICC/IF
	GTX637313	Influenza A virus PB1 protein	HL1714	Rec Rb mAb	WB, ICC/IF, IP
	GTX637314	Influenza A virus PB1 protein	HL1715	Rec Rb mAb	WB, IHC-P (cell pellet)
	GTX637893	Influenza A virus PB2 protein	HL1992	Rec Rb mAb	WB, ICC/IF
	GTX638212	Influenza B virus Hemagglutinin (HA)	HL2208	Rec Rb mAb	WB, ICC/IF, ELISA
	GTX636950	Influenza B virus Neuraminidase (NA)	HL1476	Rec Rb mAb	WB, ICC/IF, IHC-P (cell pellet)
	GTX636099	Influenza B virus Nucleoprotein	HL1068	Rec Rb mAb	WB, ICC/IF, ELISA, Lateral Flow, Sandwich ELISA



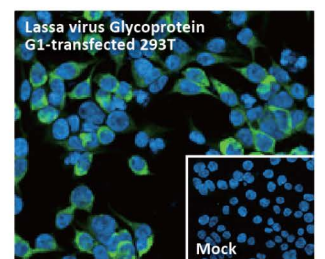
Japanese encephalitis virus NS3 antibody [HL2472] (GTX638821)



Dengue virus NS3 protein antibody [HL2634] (GTX639090)

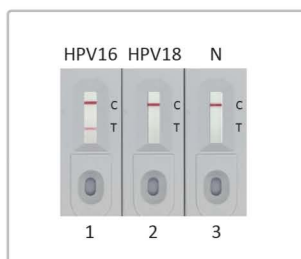


Chikungunya virus nsP1 antibody [HL2608] (GTX639060)



Lassa virus Glycoprotein G1 antibody [HL2536] (GTX638905)

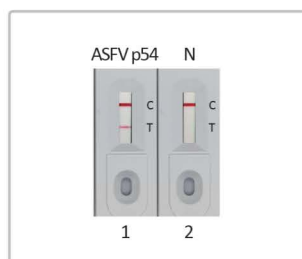
	Cat. No.	Target	Clone Name	Clonality	Applications
Japanese Encephalitis Virus	GTX638878	Japanese encephalitis virus Envelope	HL2517	Rec Rb mAb	WB, ICC/IF
	GTX638821	Japanese encephalitis virus NS3	HL2472	Rec Rb mAb	WB, ICC/IF
Lassa Virus	GTX638905	Lassa virus Glycoprotein G1	HL2536	Rec Rb mAb	WB, ICC/IF
	GTX636832	Lassa virus Nucleoprotein	HL1392	Rec Rb mAb	WB, ICC/IF
Mpox Virus	GTX638888	Mpox virus A29L	HL2527	Rec Rb mAb	WB, ICC/IF
	GTX638927	Mpox virus A4L	HL2555	Rec Rb mAb	WB, ICC/IF
	GTX640548	Mpox virus B6R	HL3102	Rec Rb mAb	WB
	GTX640553	Mpox virus B6R	HL3107	Rec Rb mAb	WB, ICC/IF
	GTX640335	Mpox virus D8L	HL2950	Rec Rb mAb	WB
	GTX639093	Mpox virus F13L	HL2637	Rec Rb mAb	WB, ICC/IF
Norovirus	GTX638181	Norovirus VP1	HL2177	Rec Rb mAb	WB, ICC/IF
PRRS Virus	GTX640149	PRRS virus GP5 protein	HL2872	Rec Rb mAb	WB, ICC/IF
	GTX638953	PRRS virus M protein	HL2575	Rec Rb mAb	WB
	GTX639073	PRRS virus M protein	HL2619	Rec Rb mAb	WB, IHC-P
	GTX637650	PRRS virus Nucleocapsid protein	HL1901	Rec Rb mAb	WB, ICC/IF
	GTX637947	PRRS virus Nucleocapsid protein	HL2046	Rec Rb mAb	WB, ICC/IF
Respiratory Syncytial Virus	GTX640819	Respiratory syncytial virus Fusion protein	GT14	Rec Ms mAb	ICC/IF
	GTX638591	Respiratory syncytial virus NS1	HL2383	Rec Rb mAb	WB, ICC/IF
	GTX636650	Respiratory syncytial virus Nucleoprotein	HL1248	Rec Rb mAb	WB, ICC/IF, IP, ELISA, Lateral Flow, Sandwich ELISA
	GTX640598	Respiratory syncytial virus type A G protein	HL3122	Rec Rb mAb	WB
	GTX636711	Respiratory syncytial virus type A Nucleoprotein	HL1297	Rec Rb mAb	WB, ICC/IF, IP, ELISA, Sandwich ELISA
Swine Influenza A Virus	GTX637381	Respiratory syncytial virus type B G protein	HL1733	Rec Rb mAb	WB, ICC/IF, IHC-P (cell pellet)
	GTX636762	Swine influenza A virus G4 EA H1N1 HA (Hemagglutinin)	HL1342	Rec Rb mAb	WB, ICC/IF, IHC-P (cell pellet)
Venezuelan Equine Encephalitis Virus	GTX636946	Venezuelan equine encephalitis virus nsP1	HL1472	Rec Rb mAb	WB, ICC/IF, IHC-P (cell pellet)
	GTX637668	Venezuelan equine encephalitis virus nsP2	HL1919	Rec Rb mAb	WB, ICC/IF
	GTX636976	Venezuelan equine encephalitis virus nsP3	HL1502	Rec Rb mAb	WB, ICC/IF, IHC-P (cell pellet)
	GTX637389	Venezuelan equine encephalitis virus nsP4	HL1741	Rec Rb mAb	WB, ICC/IF
Yellow Fever Virus	GTX639558	Yellow fever virus Envelope Protein	HL2730	Rec Rb mAb	WB, IHC-P
	GTX638767	Yellow fever virus NS4B Protein	HL2449	Rec Rb mAb	WB, ICC/IF
	GTX640259	Yellow fever virus NS5 protein	HL2916	Rec Rb mAb	WB
Zika Virus	GTX637298	Zika virus Envelope protein	HL1699	Rec Rb mAb	WB, ICC/IF
	GTX638945	Zika virus NS1 protein	HL2567	Rec Rb mAb	WB
	GTX638129	Zika virus NS2B protein	HL2151	Rec Rb mAb	WB, ICC/IF
	GTX637261	Zika virus NS4B protein	HL1663	Rec Rb mAb	WB, ICC/IF, IHC-P (cell pellet)
	GTX638132	Zika virus NS5 protein	HL2154	Rec Rb mAb	WB, ICC/IF



Capture: Human papillomavirus type 16 E7 antibody [HL1647] (GTX637228)

Detection: Human papillomavirus type 16 E7 antibody [HL1821] (GTX637546)

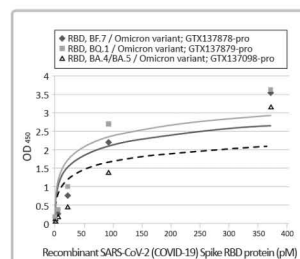
1. HPV16 E7 protein (GTX133411-pro)
2. HPV18 E7 protein (GTX133412-pro)
3. Lysis buffer



Capture: ASFV p54 antibody [HL1287] (GTX636701)

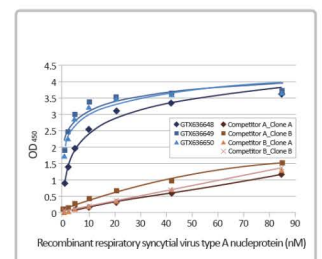
Detection: ASFV p54 antibody [HL1218] (GTX636562)

1. ASFV p54 (ECD) protein (GTX137950-pro)
2. Lysis buffer



Capture: SARS-CoV-2 (COVID-19) Spike RBD antibody [HL1014] (GTX635807)

Detection: HRP-conjugated SARS-CoV-2 (COVID-19) Spike RBD Omicron antibody [HL1867] (GTX637592)



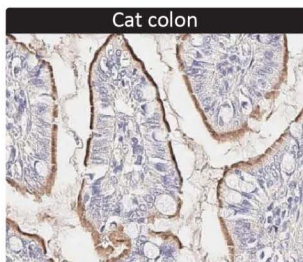
Capture: Respiratory syncytial virus Nucleoprotein antibody [HL1246] (GTX636648)

Highlighted Antibodies for Infectious Disease Research

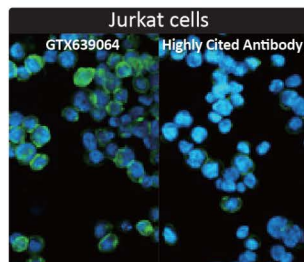
	Cat. No.	Target	Clone Name	Clonality	Applications
SARS-CoV-2 (COVID-19)	GTX636807	SARS-CoV-2 (COVID-19) 3CLpro (nsp5)	HL1367	Rec Rb mAb	WB, ICC/IF
	GTX636915	SARS-CoV-2 (COVID-19) Envelope	HL1443	Rec Rb mAb	WB, ICC/IF, IHC-P
	GTX636246	SARS-CoV-2 (COVID-19) Membrane	HL1088	Rec Rb mAb	WB, ICC/IF, IHC-P
	GTX636901	SARS-CoV-2 (COVID-19) nsp1	HL1435	Rec Rb mAb	WB, ICC/IF, IHC-P (cell pellet)
	GTX636819	SARS-CoV-2 (COVID-19) nsp10	HL1379	Rec Rb mAb	WB, ICC/IF
	GTX638597	SARS-CoV-2 (COVID-19) nsp11	HL2388	Rec Rb mAb	WB, ICC/IF
	GTX636916	SARS-CoV-2 (COVID-19) nsp12 / RdRP	HL1444	Rec Rb mAb	WB, ICC/IF, IHC-P (cell pellet)
	GTX636881	SARS-CoV-2 (COVID-19) nsp12	HL1415	Rec Rb mAb	WB, ICC/IF, IHC-P (cell pellet)
	GTX638908	SARS-CoV-2 (COVID-19) nsp14	HL2539	Rec Rb mAb	WB, ICC/IF
	GTX636917	SARS-CoV-2 (COVID-19) nsp15	HL1445	Rec Rb mAb	WB, ICC/IF, IHC-P (cell pellet)
	GTX637782	SARS-CoV-2 (COVID-19) nsp16	HL1945	Rec Rb mAb	WB, ICC/IF
	GTX636811	SARS-CoV-2 (COVID-19) nsp2	HL1371	Rec Rb mAb	WB, ICC/IF
	GTX638553	SARS-CoV-2 (COVID-19) nsp3 / PL-pro	HL2350	Rec Rb mAb	WB, ICC/IF
	GTX636719	SARS-CoV-2 (COVID-19) nsp7	HL1301	Rec Rb mAb	WB, ICC/IF, IHC-P (cell pellet)
	GTX636997	SARS-CoV-2 (COVID-19) nsp8	HL1523	Rec Rb mAb	WB, ICC/IF, IHC-P (cell pellet)
	GTX636839	SARS-CoV-2 (COVID-19) nsp9	HL1399	Rec Rb mAb	WB, ICC/IF, IHC-P (cell pellet)
	GTX635686	SARS-CoV-2 (COVID-19) Nucleocapsid	HL448	Rec Rb mAb	WB, ICC/IF, IHC-P, ELISA, Lateral Flow, Sandwich ELISA, IHC-P (cell pellet)
	GTX637321	SARS-CoV-2 (COVID-19) ORF3a	HL1722	Rec Rb mAb	WB, ICC/IF, IHC-P (cell pellet)
	GTX636925	SARS-CoV-2 (COVID-19) ORF7b	HL1453	Rec Rb mAb	WB, ICC/IF, IHC-P (cell pellet)
	GTX637666	SARS-CoV-2 (COVID-19) ORF9b	HL1917	Rec Rb mAb	WB, ICC/IF
	GTX636891	SARS-CoV-2 (COVID-19) Spike (N501Y Mutant)	HL1425	Rec Rb mAb	WB
	GTX635791	SARS-CoV-2 (COVID-19) Spike RBD	HL1002	Rec Rb mAb	ELISA, Lateral Flow, Neutralizing/Inhibition, Sandwich ELISA
	GTX637591	SARS-CoV-2 (COVID-19) Spike RBD Omicron	HL1866	Rec Rb mAb	ICC/IF, ELISA, Neutralizing/Inhibition, Sandwich ELISA
	GTX635654	SARS-CoV-2 (COVID-19) Spike S1	HL6	Rec Rb mAb	WB, ICC/IF, IHC-P, FACS, IP, ELISA, Sandwich ELISA, IHC-P (cell pellet)
	GTX635911	SARS-CoV-2 (COVID-19) Spike S2 / S2'	HL1039	Rec Rb mAb	WB, ICC/IF, ELISA, Sandwich ELISA, IHC-P (cell pellet)
	GTX635693	SARS-CoV-2 (COVID-19) Spike S2	HL237	Rec Rb mAb	WB, ICC/IF, ELISA, Sandwich ELISA, IHC-P (cell pellet)

Highlighted Antibodies for Virus Entry

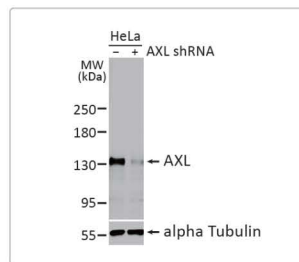
	Cat. No.	Target	Clone Name	Clonality	Reactivity	Applications
	GTX636265	ACE2	HL1092	Rec Rb mAb	Hu, Cat, Dog, AGMK	WB, ICC/IF, IHC-P
	GTX637922	AXL	HL2021	Rec Rb mAb	Hu	WB, ELISA
	GTX639645	CCR5	HL2780	Rec Rb mAb	Hu	WB, ICC/IF, IHC-P
	GTX637264	CD81	HL1666	Rec Rb mAb	Hu, Ms, Rat	WB, ICC/IF
	GTX639064	CXCR4	HL2612	Rec Rb mAb	Hu, Ms, Dog	WB, ICC/IF
	GTX638646	CXCR4	HL2424	Rec Rb mAb	Hu, Ms	WB, ICC/IF, IHC-P
	GTX637540	Grp78	HL1815	Rec Rb mAb	Hu, Ms, Rat	WB, ICC/IF, IHC-P
	GTX637060	Hsp70	HL1581	Rec Rb mAb	Hu, Cat	WB, IHC-P
	GTX636971	RAB5A	HL1497	Rec Rb mAb	Hu, Ms, Rat, Cat, Dog	WB, ICC/IF, IHC-P, IP
	GTX639624	TMPRSS2	HL2759	Rec Rb mAb	Hu, Ms, Rat	WB, IHC-P



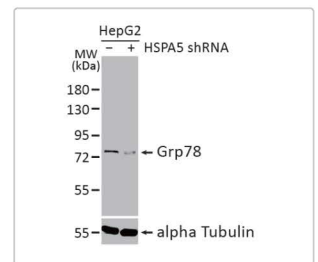
ACE2 antibody [HL1092] (GTX636265)



CXCR4 antibody [HL2612] (GTX639064)



AXL antibody [HL2021] (GTX637922)



Grp78 antibody [HL1815] (GTX637540)