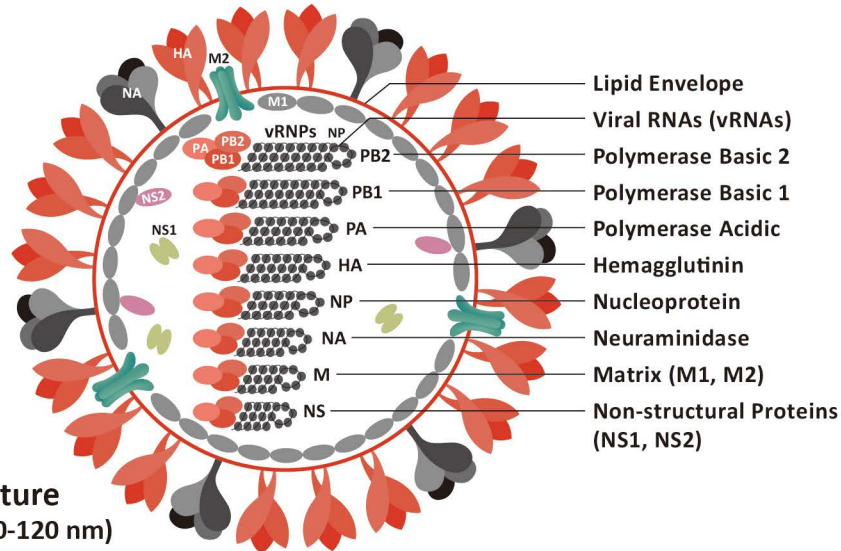


Your Expertise

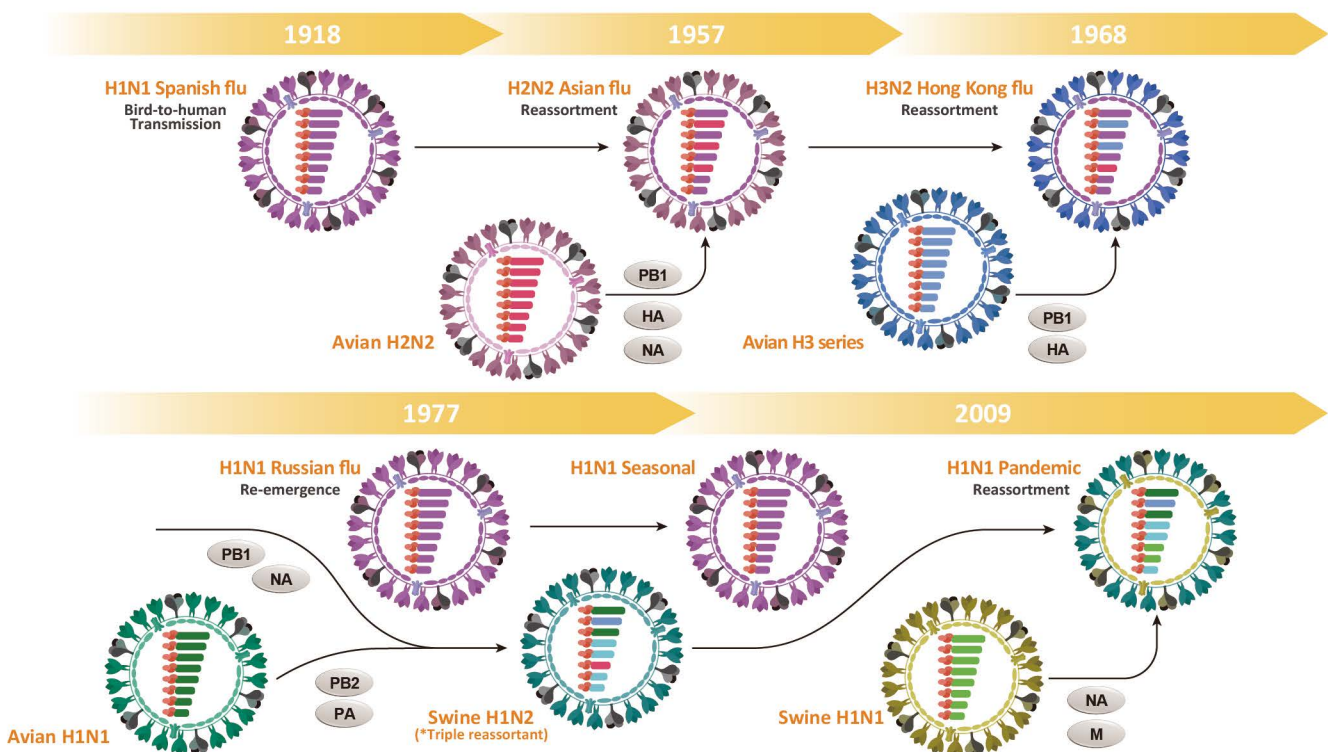
Our Antibodies

Accelerated Discovery

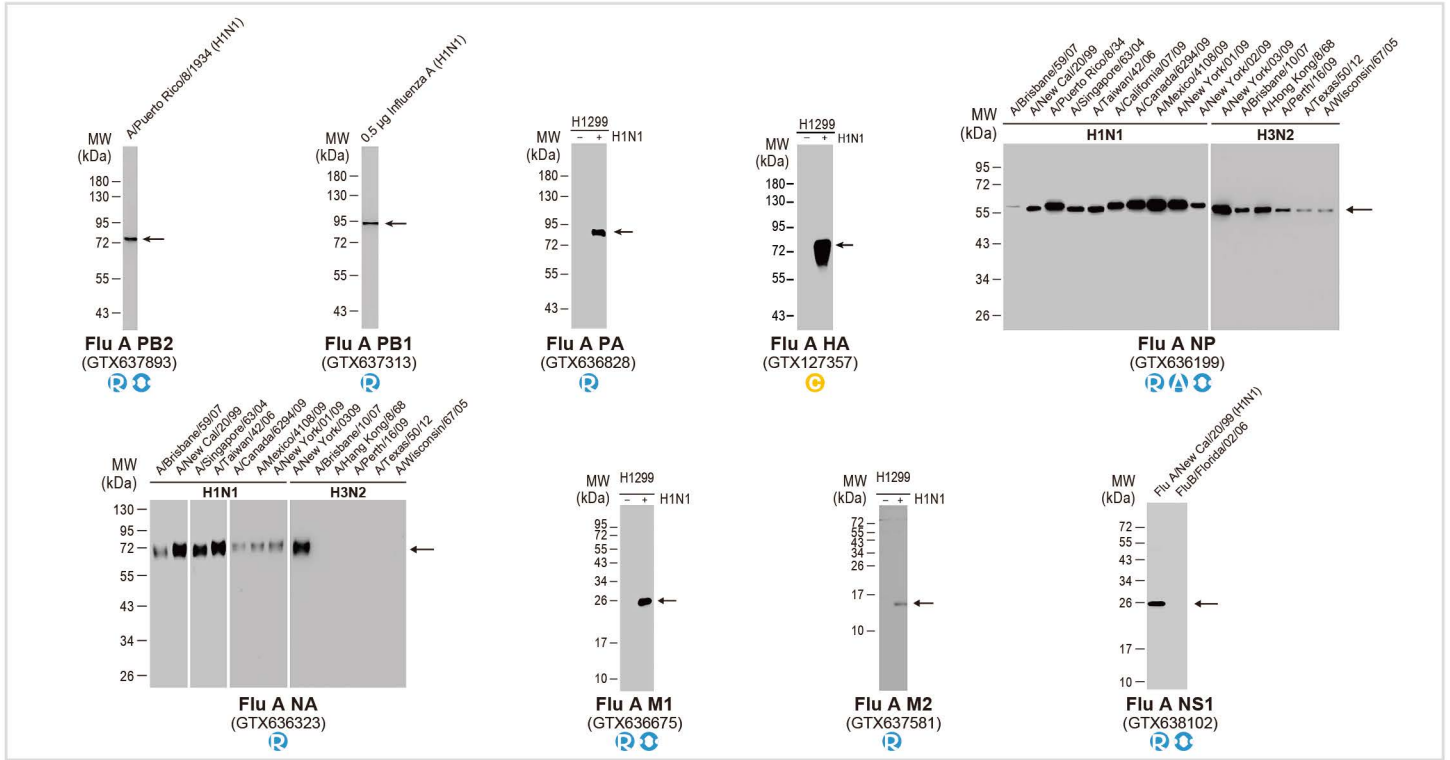
Selected Antibodies for Influenza Virus



Influenza A viruses belong to the family Orthomyxoviridae and have a segmented single-strand negative sense RNA genome. They represent one of the three types of influenza virus that infect humans, the other two being B and C. While influenza C is less common and generally milder clinically, influenza B viruses are increasingly being recognized as major contributors to the burden of influenza worldwide. The main antigenic determinants of influenza A and B viruses are the hemagglutinin (HA) and neuraminidase (NA) transmembrane glycoproteins. Based on the antigenicity of these glycoproteins, influenza A viruses are further subdivided into sixteen "H" (H1-H16) and nine "N" (N1-N9) subtypes. The influenza A virus genome consists of eight separate RNA segments that encode the proteins (i.e., PB1, PB2, PA, HA, NA, NP, M1, M2, NS1, and NS2) essential for host infection, viral genome replication, and virus particle packaging. GeneTex offers an outstanding selection of antibodies that cover a wide spectrum of influenza research, including reagents that detect antigenic determinants or other viral proteins.



Influenza A Viral Proteins

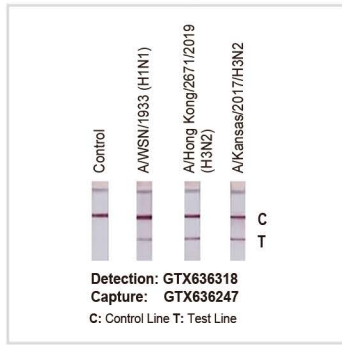


Influenza A

R Recombinant
 C Citation Support
 K KO/KD Validation
 A Comparable Abs
 O Orthogonal Validation

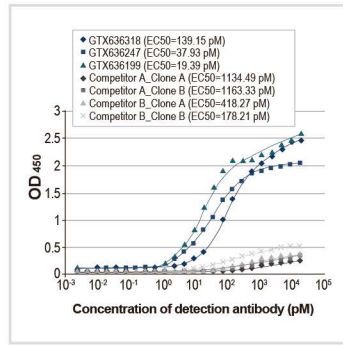
	Cat. No.	Product Name	Clonality	Applications
Polymerase Basic 2 (PB2)	R C K GTX637893	Influenza A virus PB2 protein antibody [HL1992]	Rec Rb mAb	ICC/IF, WB
	R C K GTX125926	Influenza A virus PB2 protein antibody	Rb pAb	ICC/IF, IP, WB
Polymerase Basic 1 (PB1)	R C K GTX637313	Influenza A virus PB1 protein antibody [HL1714]	Rec Rb mAb	ICC/IF, WB
	R C K GTX637314	Influenza A virus PB1 protein antibody [HL1715]	Rec Rb mAb	IHC-P (cell pellet), WB
Polymerase Acidic (PA)	C K GTX125923	Influenza A virus PB1 protein antibody	Rb pAb	ICC/IF, WB
	R C K GTX636828	Influenza A virus PA protein antibody [HL1388]	Rec Rb mAb	ICC/IF, WB
Hemagglutinin (HA)	C K GTX118991	Influenza A virus PA protein antibody	Rb pAb	ICC/IF, WB
	C K GTX629750	Influenza A virus H1N1 HA (Hemagglutinin) antibody [GT223]	Ms mAb	ICC/IF, WB
	C K GTX629746	Influenza A virus H1N1 HA (Hemagglutinin) antibody [GT521]	Ms mAb	WB
	C K GTX127357	Influenza A virus H1N1 HA (Hemagglutinin) antibody	Rb pAb	ELISA, ICC/IF, IHC-P, WB
	R C K GTX638602	Influenza A virus H3N2 HA (Hemagglutinin) antibody [HL2393]	Rec Rb mAb	WB
	R C K GTX127363	Influenza A virus H3N2 HA (Hemagglutinin) antibody	Rb pAb	IHC-P, WB
Nucleoprotein (NP)	R C K GTX637034	Influenza A virus H10N3 HA (Hemagglutinin) antibody [HL1559]	Rec Rb mAb	ICC/IF, IHC-P (cell pellet)
	R C A K GTX636199	Influenza A virus Nucleoprotein antibody [HL1078]	Rec Rb mAb	ELISA, ICC/IF, Lateral Flow, Sandwich ELISA, WB
	R C A K GTX636247	Influenza A virus Nucleoprotein antibody [HL1089]	Rec Rb mAb	ELISA, ICC/IF, IHC-P (cell pellet), Lateral Flow, Sandwich ELISA, WB
	R C A K GTX636282	Influenza A virus Nucleoprotein antibody [HL1098]	Rec Rb mAb	ELISA, ICC/IF, Sandwich ELISA, WB
	R C A K GTX636318	Influenza A virus Nucleoprotein antibody [HL1103]	Rec Rb mAb	ELISA, ICC/IF, IHC-P (cell pellet), Lateral Flow, Sandwich ELISA, WB
	R C A K GTX637790	Influenza A virus Nucleoprotein antibody [HL1953]	Rec Rb mAb	Lateral Flow
Neuraminidase (NA)	C K GTX629633	Influenza A virus Nucleoprotein antibody [GT1236]	Ms mAb	ELISA, ICC/IF, IHC-Fr, IHC-P, Sandwich ELISA, WB
	R C A K GTX125989	Influenza A virus Nucleoprotein antibody	Rb pAb	ELISA, ICC/IF, IHC-P, IP, Sandwich ELISA, WB
	R C A K GTX636323	Influenza A virus H1N1 NA (Neuraminidase) antibody [HL1108]	Rec Rb mAb	ICC/IF, WB
Matrix Protein 1 (M1)	C K GTX629696	Influenza A virus H1N1 NA (Neuraminidase) antibody [GT288]	Ms mAb	ICC/IF, WB
	C K GTX125974	Influenza A virus H1N1 NA (Neuraminidase) antibody	Rb pAb	ICC/IF, WB
	R C A K GTX636675	Influenza A virus M1 (matrix protein) antibody [HL1273]	Rec Rb mAb	ICC/IF, IHC-P (cell pellet), WB
Matrix Protein 2 (M2)	R C A K GTX125928	Influenza A virus M1 (matrix protein) antibody	Rb pAb	ICC/IF, IHC-Fr, WB
	C K GTX127356	Influenza A virus M1 (matrix protein) antibody	Rb pAb	ELISA, WB
	R C A K GTX637581	Influenza A virus M2 (matrix protein) antibody [HL1856]	Rec Rb mAb	ICC/IF, WB
Non-structural Protein 1 (NS1)	C K GTX125951	Influenza A virus M2 (matrix protein) antibody	Rb pAb	EM, ICC/IF, WB
	R C A K GTX638102	Influenza A virus NS1 (nonstructural protein) antibody [HL2130]	Rec Rb mAb	ICC/IF, WB
	C K GTX633685	Influenza A virus NS1 (nonstructural protein) antibody [GT1653]	Ms mAb	WB
Non-structural Protein 2 (NS2)	R C A K GTX125990	Influenza A virus NS1 (nonstructural protein) antibody	Rb pAb	ICC/IF, IHC-P, WB
	R C A K GTX125953	Influenza A virus NS2 / NEP antibody	Rb pAb	ICC/IF, WB

Lateral Flow Assay



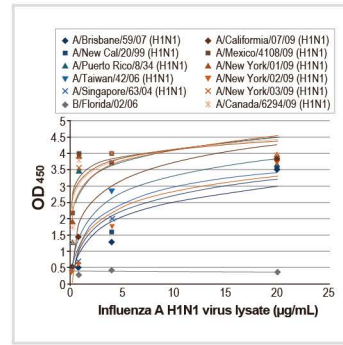
Flu A NP (GTX636318)
Flu A NP (GTX636247)

Indirect ELISA



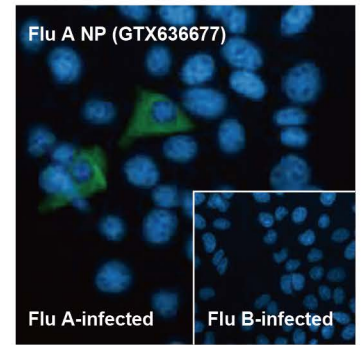
Flu A NP (GTX636318)
Flu A NP (GTX636247)
Flu A NP (GTX636199)

Sandwich ELISA



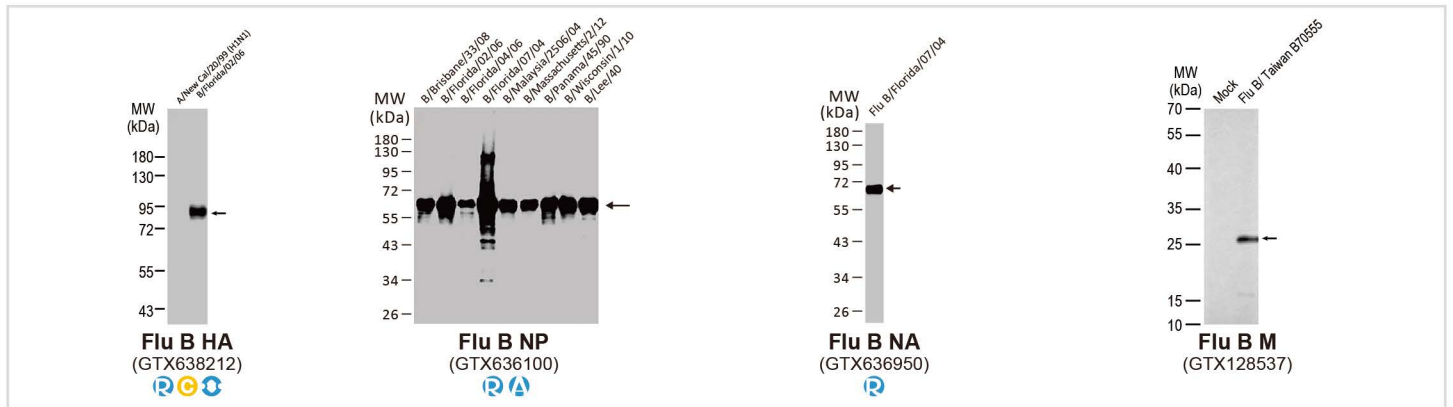
Flu A NP (GTX636318)
Flu A NP (GTX636247)

ICC/IF staining



Flu A NP (GTX636677)

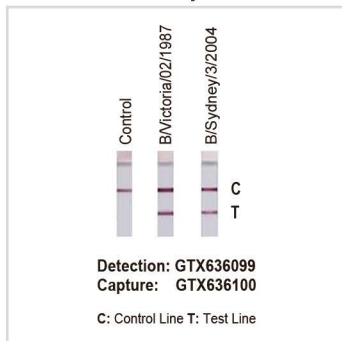
Influenza B Viral Proteins



Influenza B

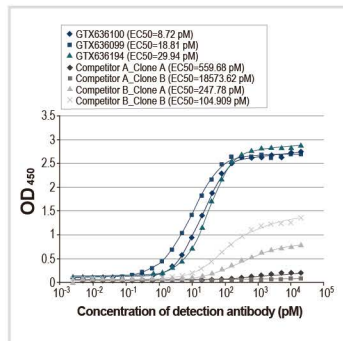
	Cat. No.	Product Name	Clonality	Applications
Whole Virus	GTX128544	Influenza B virus antibody	Rb pAb	WB
Hemagglutinin (HA)	GTX638212	Influenza B virus Hemagglutinin (HA) antibody [HL2208]	Rec Rb mAb	WB
	GTX128542	Influenza B virus Hemagglutinin (HA) antibody	Rb pAb	ELISA, ICC/IF, WB
Nucleoprotein (NP)	GTX636099	Influenza B virus Nucleoprotein antibody [HL1068]	Rec Rb mAb	ELISA, ICC/IF, Lateral Flow, Sandwich ELISA, WB
	GTX636100	Influenza B virus Nucleoprotein antibody [HL1069]	Rec Rb mAb	ELISA, ICC/IF, Lateral Flow, Sandwich ELISA, WB
	GTX629882	Influenza B virus Nucleoprotein antibody [GT371]	Ms mAb	ELISA, ICC/IF, Sandwich ELISA, WB
	GTX128538	Influenza B virus Nucleoprotein antibody	Rb pAb	ELISA, ICC/IF, Sandwich ELISA, WB
Neuraminidase (NA)	GTX135819	Influenza B virus Nucleoprotein antibody	Rb pAb	ICC/IF, IHC-P, IHC-P (cell pellet), WB
	GTX636950	Influenza B virus Neuraminidase (NA) antibody [HL1476]	Rec Rb mAb	ICC/IF, IHC-P (cell pellet), WB
Matrix Protein (M)	GTX128540	Influenza B virus Neuraminidase (NA) antibody	Rb pAb	ICC/IF
	GTX128537	Influenza B virus M (matrix protein) antibody	Rb pAb	ICC/IF, WB

Lateral Flow Assay



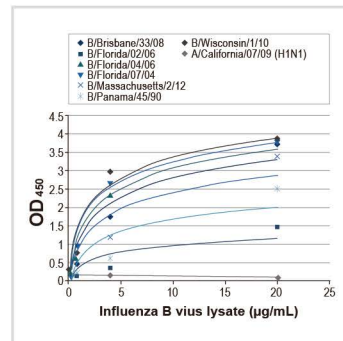
Flu B NP (GTX636099)
Flu B NP (GTX636100)

Indirect ELISA



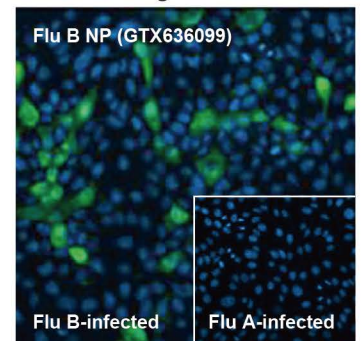
Flu B NP (GTX636099)
Flu B NP (GTX636100)
Flu B NP (GTX636194)

Sandwich ELISA



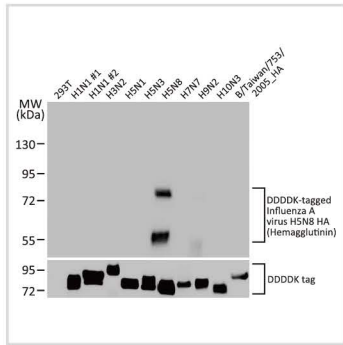
Flu B NP (GTX636099)
Flu B NP (GTX636100)

ICC/IF staining

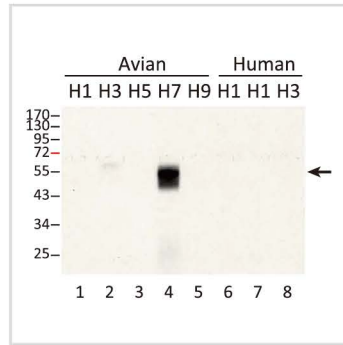


Flu B NP (GTX636099)

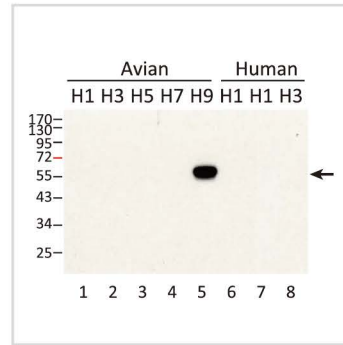
Avian and Swine Influenza A Viral Proteins



Avian FluA H5N8 HA (GTX637025)



Avian FluA H7N7 HA (GTX127303)



Avian FluA H9N2 HA (GTX127305)



Swine Influenza A virus G4 EA H1N1 HA (Hemagglutinin) antibody [HL1342](GTX636762)

Avian Influenza A

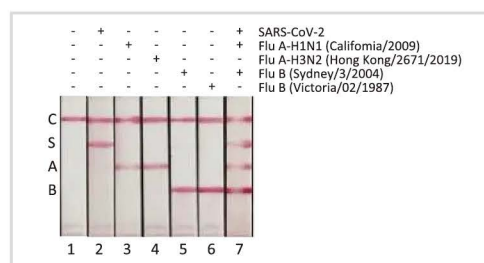
	Cat. No.	Product Name	Clonality	Applications
Hemagglutinin (HA)		GTX632358 Avian Influenza A virus H5N1 HA (Hemagglutinin) antibody [1D10]	Ms mAb	ICC/IF, WB
		GTX127299 Avian Influenza A virus H5N3 HA (Hemagglutinin) antibody	Rb pAb	WB
		GTX637025 Avian Influenza A virus H5N8 HA (Hemagglutinin) antibody [HL1550]	Rec Rb mAb	IHC-P (cell pellet), WB
		GTX127303 Avian Influenza A virus H7N7 HA (Hemagglutinin) antibody	Rb pAb	WB
		GTX638623 Avian Influenza A virus H9N2 HA (Hemagglutinin) antibody [HL2406]	Rec Rb mAb	WB
Neuraminidase (NA)		GTX127305 Avian Influenza A virus H9N2 HA (Hemagglutinin) antibody	Rb pAb	WB
		GTX127984 Avian Influenza A virus H5N1 NA (Neuraminidase) antibody	Rb pAb	WB

Swine Influenza A

	Cat. No.	Product Name	Clonality	Applications
Hemagglutinin (HA)		GTX636762 Swine Influenza A virus G4 EA H1N1 HA (Hemagglutinin) antibody [HL1342]	Rec Rb mAb	ICC/IF, IHC-P (cell pellet), WB
		GTX135762 Swine Influenza A virus G4 EA H1N1 HA (Hemagglutinin) antibody	Rb pAb	WB

Recombinant Influenza Viral Proteins

Cat. No.	Product Name	Applications
GTX135904-pro	Influenza A virus Nucleoprotein (A/California/2009 (H1N1)), DDDDK Tag	ELISA, Lateral Flow, Sandwich ELISA, WB
GTX136317-pro	Influenza A virus Nucleoprotein (A/Hong Kong/2671/2019 (H3N2)), DDDDK Tag	ELISA, Lateral Flow, Sandwich ELISA
GTX135903-pro	Influenza A virus Nucleoprotein (A/Kansas/2017/H3N2), DDDDK Tag	ELISA, Lateral Flow, Sandwich ELISA, WB
	GTX135868-pro Influenza A virus Nucleoprotein (A/WSN/1933 (H1N1)), DDDDK Tag	ELISA, Lateral Flow, Sandwich ELISA
	GTX135867-pro Influenza B virus Nucleoprotein (B/Sydney/3/2004), DDDDK Tag	ELISA, Lateral Flow, Sandwich ELISA
GTX136277-pro	Influenza B virus Nucleoprotein (B/Victoria/02/1987), DDDDK Tag	ELISA, Lateral Flow, Sandwich ELISA



Samples (40 ng) :

1. Lysis buffer
2. SARS-CoV-2 (COVID-19) NP (GTX135592-pro)
3. Flu A-H1N1 NP (GTX135904-pro)
4. Flu A-H3N2 NP (GTX136317-pro)
5. Flu B NP (GTX135867-pro)
6. Flu B NP (GTX136277-pro)
7. Mixture of SARS-CoV-2, Flu A-H1N1 and Flu B NP

Capture:

1. SARS-CoV-2 (COVID-19) Nucleocapsid antibody [HL455] (GTX635688)
2. A. Influenza A virus Nucleoprotein antibody [HL1078] (GTX636199)
3. B. Influenza B virus Nucleoprotein antibody [HL1073] (GTX636194)

Detection:

1. SARS-CoV-2 (COVID-19) Nucleocapsid antibody [HL448] (GTX635686)
2. Influenza A virus Nucleoprotein antibody [HL1953] (GTX637790)
3. Influenza B virus Nucleoprotein antibody [HL1068] (GTX636099)