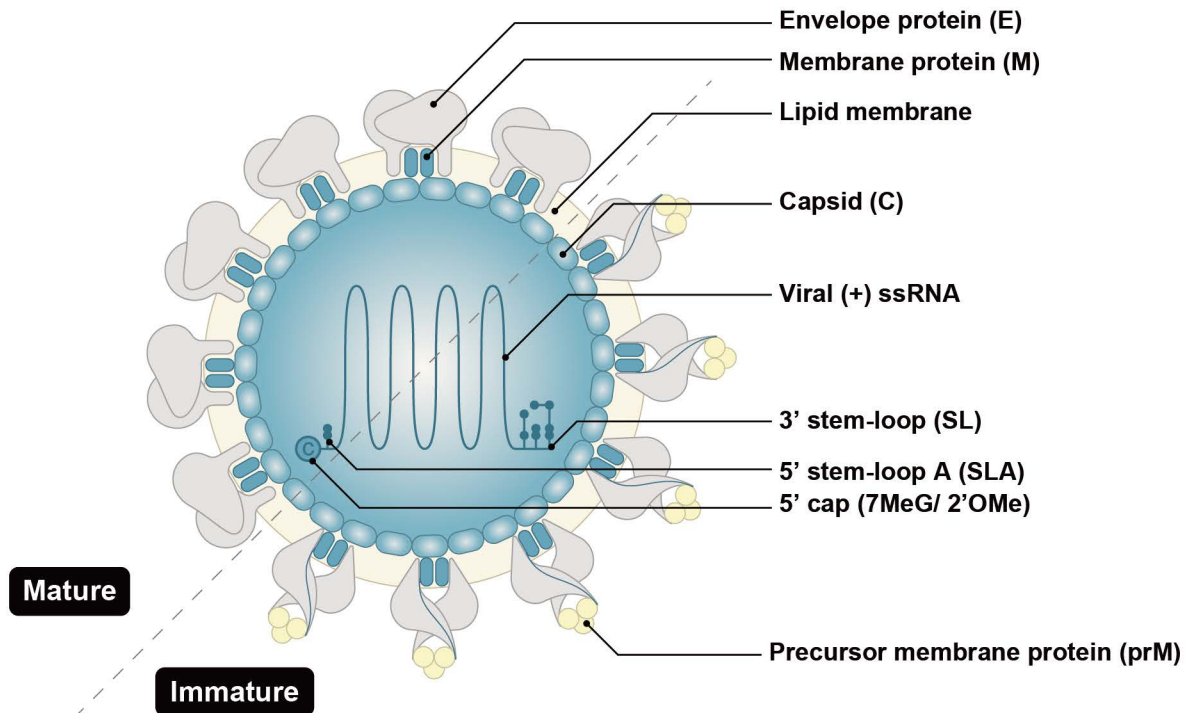


Your Expertise

Our Antibodies

Accelerated Discovery

# Zika Virus Research

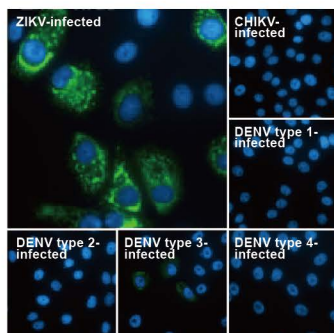


Zika virus (ZIKV) exploded into international prominence in 2015. This mosquito-borne flavivirus had its first reported outbreak in 2007, followed by a larger event in 2013 in French Polynesia and the present outbreak in Brazil. Nearly 70 countries and territories have documented ZIKV transmission since 2007.

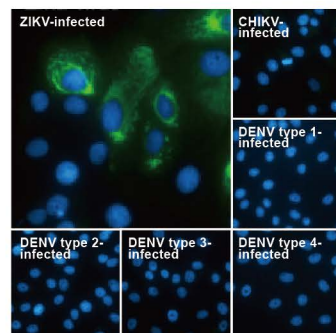
While about 80% of ZIKV infections are asymptomatic, the virus can cause influenza-like symptoms and other clinical manifestations including conjunctivitis. Infection has been linked to cases of neurological disease, including Guillain-Barre syndrome. Most concerning is the increasingly robust evidence associating ZIKV with microcephaly (and other neurodevelopmental problems) in newborns from infected mothers. Antibodies targeting different protein components of ZIKV would be immensely useful to facilitate both basic research and as potential diagnostic reagents.

## Highlighted Products

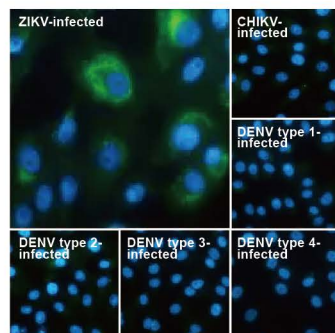
 Recombinant  Citation Support  Orthogonal Validation





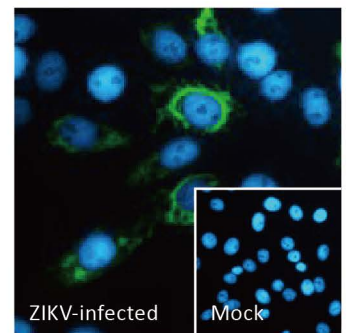
Zika virus Envelope protein antibody (GTX133314)  




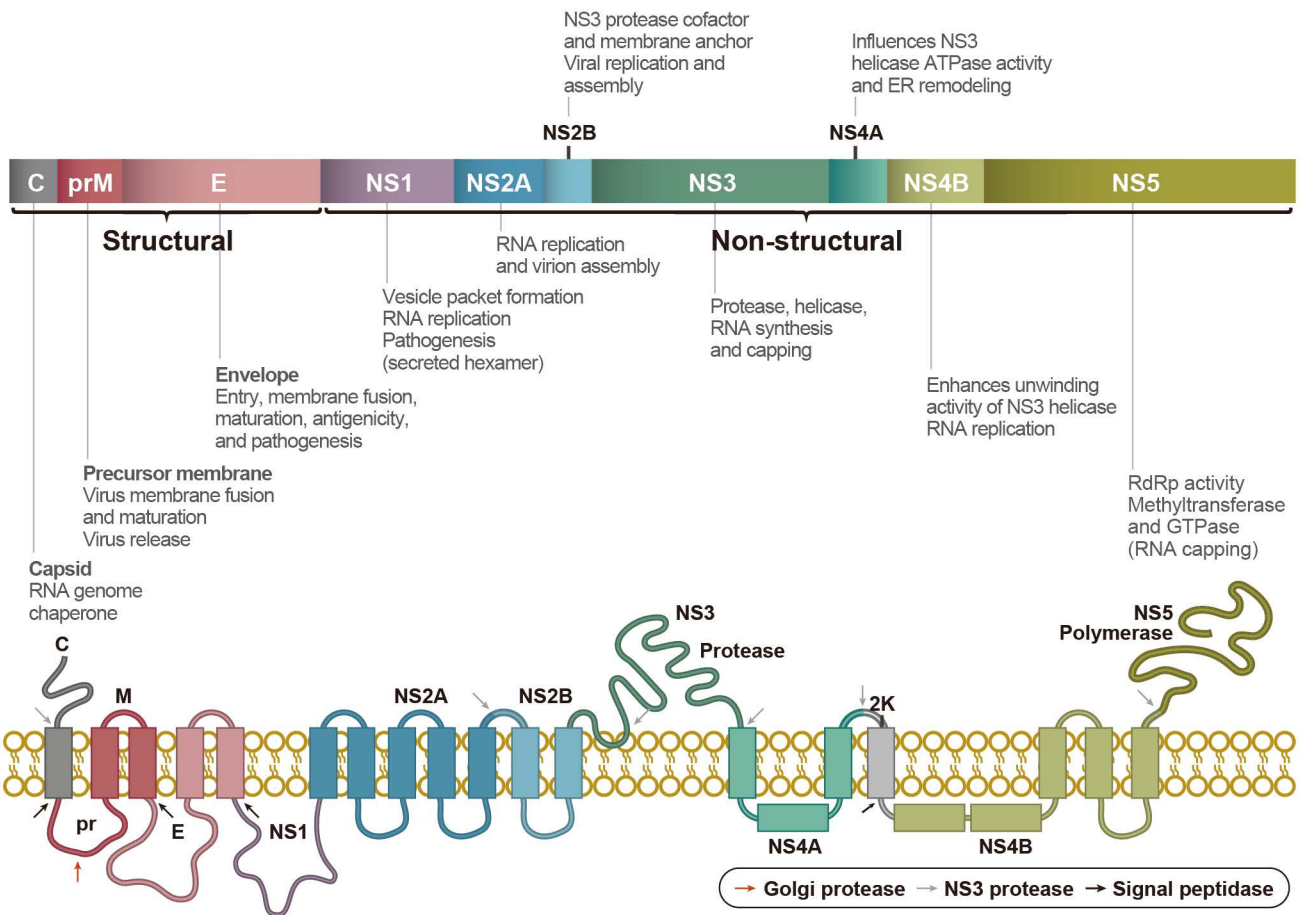
Zika virus NS2B protein antibody (GTX133308)  



Zika virus NS3 protein antibody (GTX133309)  



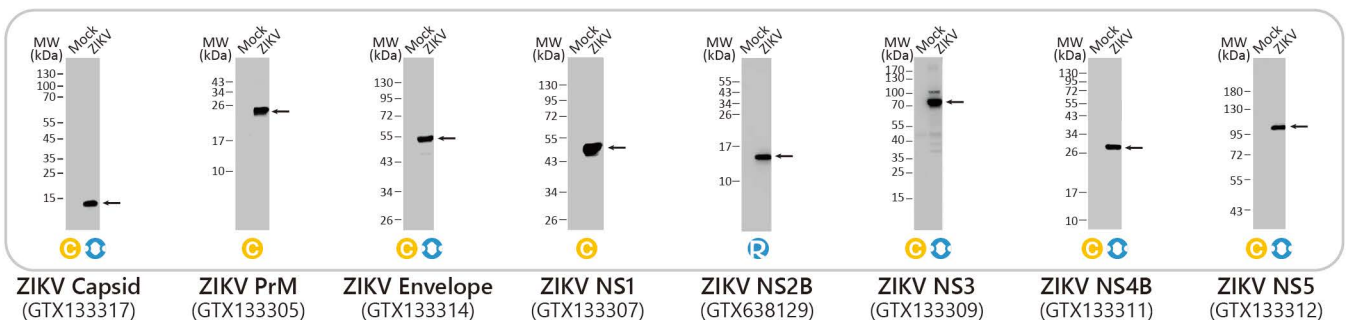
Zika virus NS4B protein antibody [HL1664] (GTX637262) 



### Highlighted Products

R Recombinant 
 C Citation Support 
 O Orthogonal Validation

Cat. No.	Product Name	Clonality	Applications
<span style="color: blue;">C</span> <span style="color: orange;">C</span> GTX133317	Zika virus Capsid protein antibody	Rb pAb	WB, ICC/IF, IHC-P (cell pellet)
<span style="color: orange;">C</span> GTX133305	Zika virus prM protein antibody	Rb pAb	WB, ICC/IF, IP
<span style="color: blue;">C</span> <span style="color: orange;">C</span> GTX133314	Zika virus Envelope protein antibody	Rb pAb	WB, ICC/IF, IHC-P
<span style="color: blue;">C</span> <span style="color: orange;">C</span> GTX133325	Zika virus Envelope protein antibody	Rb pAb	WB, ICC/IF, ELISA, Sandwich ELISA
<span style="color: orange;">C</span> GTX634155	Zika virus Envelope protein antibody [GT363]	Ms mAb	WB, ICC/IF, ELISA, IHC, Sandwich ELISA
<span style="color: blue;">R</span> GTX637298	Zika virus Envelope protein antibody [HL1699]	Rec Rb mAb	WB, ICC/IF
<span style="color: orange;">C</span> GTX133307	Zika virus NS1 protein antibody	Rb pAb	WB, ICC/IF, ELISA, Sandwich ELISA
<span style="color: blue;">C</span> <span style="color: orange;">C</span> GTX634159	Zika virus NS1 protein antibody [GT281]	Ms mAb	WB, ICC/IF, IHC-P
<span style="color: orange;">C</span> GTX634158	Zika virus NS1 protein antibody [GT5212]	Ms mAb	WB, ICC/IF, ELISA, Sandwich ELISA
<span style="color: blue;">R</span> GTX638945	Zika virus NS1 protein antibody [HL2567]	Rec Rb mAb	WB
<span style="color: blue;">C</span> <span style="color: orange;">C</span> GTX133308	Zika virus NS2B protein antibody	Rb pAb	WB, ICC/IF, IHC-P, IHC-Fr, IHC-P (cell pellet)
<span style="color: blue;">R</span> GTX638129	Zika virus NS2B protein antibody [HL2151]	Rec Rb mAb	WB, ICC/IF
<span style="color: blue;">C</span> <span style="color: orange;">C</span> GTX133309	Zika virus NS3 protein antibody	Rb pAb	WB, ICC/IF, IHC-P
<span style="color: orange;">C</span> GTX133704	Zika virus NS4A protein antibody	Rb pAb	WB, ICC/IF
<span style="color: blue;">C</span> <span style="color: orange;">C</span> GTX133311	Zika virus NS4B protein antibody	Rb pAb	WB, ICC/IF, IHC-Fr, FACS
<span style="color: blue;">C</span> <span style="color: orange;">C</span> GTX133321	Zika virus NS4B protein antibody	Rb pAb	WB, ICC/IF, IHC-P (cell pellet)
<span style="color: blue;">R</span> GTX637261	Zika virus NS4B protein antibody [HL1663]	Rec Rb mAb	WB, ICC/IF, IHC-P (cell pellet)
<span style="color: blue;">C</span> <span style="color: orange;">C</span> GTX133312	Zika virus NS5 protein antibody	Rb pAb	WB, ICC/IF
<span style="color: blue;">C</span> <span style="color: orange;">C</span> GTX133327	Zika virus NS5 protein antibody	Rb pAb	WB, ICC/IF, IP
<span style="color: blue;">R</span> <span style="color: orange;">C</span> GTX638132	Zika virus NS5 protein antibody [HL2154]	Rec Rb mAb	WB, ICC/IF



GeneTex

International  
USA

Tel: 886.3.6208988

Tel: 1.949.553.1900 Toll-free: 1.877.436.3839

